

INDUSTRIAL TOOLS AND SOLUTIONS

2016

Atlas Copco

GRINDERS



Contents

| | |
|---|-----|
| Introduction..... | 223 |
| Guide | 224 |
| Product safety..... | 225 |
| Turbine grinders and sanders..... | 226 |
| Die grinders | 229 |
| Straight grinders | 231 |
| Angle grinders | 233 |
| Angle sanders..... | 235 |
| Orbital and random orbital sanders..... | 237 |
| Dust extraction..... | 239 |
| Routers | 242 |
| Circular cutters | 243 |

Maximum material removal with minimum effort

Atlas Copco Grinders are designed to be powerful, yet small in size and weight. With Atlas Copco Grinders, you can rely on maximum material removal with minimum effort. Our range of grinders covers virtually all applications.

DIE GRINDING

Small precision deburring – die grinding is performed with either tungsten carbide, high speed steel burrs or mounted points.

The choice of burr depends on the size of your job. A larger volume of removed material will require a bigger size of the burr's head.

Select the tool rpm depending on the diameter of the burr head, the material to be ground and the material in the rotary burr. Use tungsten carbide burrs for hard and tough materials. High speed steel burrs are recommended for natural steel and medium hardened materials. Example, see table below:

| Burr head Ø | | Hardened steel | Natural steel | Soft material |
|-------------|-------|------------------|-------------------------------|------------------------------|
| | | Though materials | Softer materials Cast iron | Wood, brass Plastics, Al. |
| Up to 1/4" | - TC | 38000 | 38000 | 38000 |
| | - HSS | - | 20000 | 20000 |
| Up to 1/2" | - TC | 30000 | 30000 | 30000 |
| | - HSS | - | - | 20000 |

TC – Tungsten carbide tipped rotary burr. HSS – High speed steel burrs.

For mounted points, follow the recommendations that relate to the particular mounted point.

ROUGH GRINDING

Pure material removal is determined by the power generated at the grinding process. The applied feed force and the rotation of the wheel generates a cutting force which, multiplied by the peripheral speed of the wheel, represents the power of removed material. (Power=Peripheral speed x Cutting force).

A powerful grinder will provide enough power with maintained rotational speed, when applying feed-force. A suitable combination of operative rotational speed, feed-force applied by the operator and power of the grinder, will give you the best combination for the material removal required.

As rough grinding is performed with bonded abrasives, a limitation of rotational speed is necessary in order to prevent wheel fractures due to centrifugal force.

The peripheral speed is limited to 14200 S.F.P.M (surface feet per minute) for fiber reinforced depressed center, straight and cutting off wheels. Resin bonded cup and straight wheels are limited to a peripheral speed of 9000 S.F.P.M.

SANDING AND POLISHING

Unlike die and rough grinding, sanding and polishing applies to the requirements of a surface. A fine surface will require a fine grit paper, fine Scotch-Brite, Bear Tex or a soft polishing bonnet. Rougher surface grinding will require a higher material removal rate thus requiring a coarser grit paper.

Similar to rough grinding, a rough surface, ground with coarse grit, will benefit from a high rotational speed. The limitations, however, are the maximum allowed speed of the backing pad and the fiber disc.

Normal sanding speeds for fiber discs of diameter 5", 7" and 9" are 4000 to 6000 rpm.

Polishing with different pastes and compounds require low speed in combination with high torque. Suitable speeds are 1800 to 2200 rpm.

Sanding with wet coated abrasives is best performed at low speeds, because water is thrown out into the periphery and partly because of the fine grit.

Scotch-Brite, Bear Tex and flap wheels perform best at 50% of their maximum allowed rotational speeds.

THE SPEED GOVERNOR

The amount of material removed in the grinding process depends on the power of the tool and the operative rotational speed. The diagram below shows the correlation between torque, power and rotational speed of a non governed pneumatic grinder.

In order to remove material, the operator has to apply a feed-force on the work-piece.

Consequently the rotational speed decreases

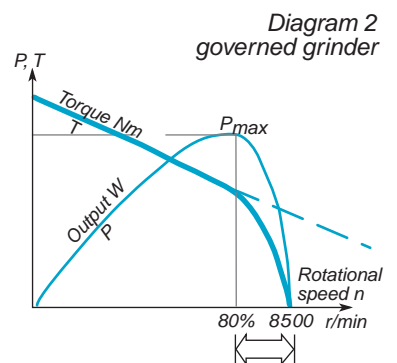
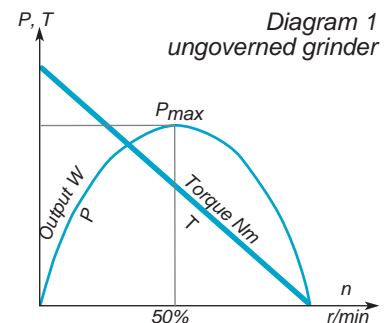
and having passed approximately 50% of the free speed, the operative power output starts to decrease. Theoretically, the most material would be removed at approximately 50% of the free speed on a non governed grinder, (diagram 1).

The Atlas Copco grinders are built small and smooth, partly due to their speed governor. The air is governed to the air flow necessary to maintain the rotational speed regardless of load, (to the extent of the power of the grinder).

The correlation between power, torque and rotational speed of a governed grinder is shown in diagram 2.

A theoretical optimum of material removal is reached at approximately 80% of the free speed. The grinder generates max power, removing more material with applied feed force. The rotational speed decreases are negligible.

Air is used economically, as the flow through the motor is adjusted after applied load. Air consumption at free speed is minimized. The governor opens and lets in more air during load thus keeping the optimal rpm.



Guides

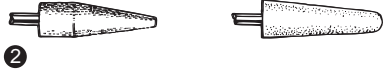
DIE GRINDING AND DEBURRING

SEE PAGE 229

1 Carbide burrs



2 Mounted points



ROUGH GRINDING AND CUTTING OFF

SEE PAGE 227 AND 233

3 Depressed center wheels



4 Cut off wheels



5 Cup wheels



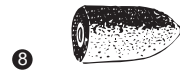
6 Flap wheels



7 Straight wheels



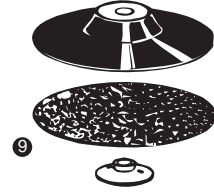
8 Cone wheels



SANDING AND POLISHING

SEE PAGE 235 AND 237

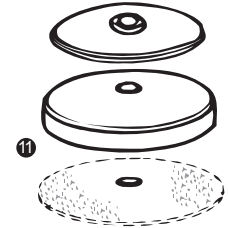
9 Fibre discs



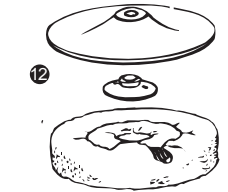
10 Wire brushes



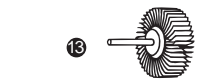
11 Coated abrasives



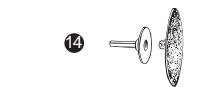
12 Polishing bonnets



13 Radial flap wheels



14 Scotch-Brite



DIAMETER – PERIPHERAL SPEED – R/MIN

The table below will help you to translate the peripheral speed of the grinding wheel to the correct rotational speed of the grinder when using a grinding wheel with a specific diameter.

| Wheel diameter inches | Surface feet per minute | | | | | | | | | | | | | | | | |
|-----------------------|-------------------------|--------|--------|--------|--------|--------|--------|--------|--------|--------|--------|--------|--------|--------|--------|--------|--|
| | 4,000 | 4,500 | 5,000 | 5,500 | 6,000 | 6,500 | 7,000 | 7,500 | 8,000 | 8,500 | 9,000 | 9,500 | 10,000 | 12,000 | 12,000 | 14,200 | |
| | Revolutions per minute | | | | | | | | | | | | | | | | |
| 1 | 15,279 | 17,189 | 19,099 | 21,008 | 22,918 | 24,828 | 26,737 | 28,647 | 30,558 | 32,467 | 34,377 | 36,287 | 38,197 | 45,837 | 47,746 | 54,240 | |
| 1 1/2 | 10,186 | 11,459 | 12,732 | 14,006 | 15,279 | 16,552 | 17,825 | 19,099 | 20,372 | 21,645 | 22,918 | 24,192 | 25,465 | 30,558 | 31,831 | 36,160 | |
| 2 | 7,639 | 8,594 | 9,549 | 10,504 | 11,459 | 12,414 | 13,369 | 14,324 | 15,279 | 16,234 | 17,189 | 18,144 | 19,099 | 22,918 | 23,873 | 27,120 | |
| 2 1/2 | 6,112 | 6,875 | 7,639 | 8,403 | 9,167 | 9,931 | 10,695 | 11,459 | 12,223 | 12,987 | 13,751 | 14,515 | 15,279 | 18,335 | 19,099 | 21,696 | |
| 3 | 5,093 | 5,730 | 6,366 | 7,003 | 7,639 | 8,276 | 8,913 | 9,549 | 10,186 | 10,823 | 11,459 | 12,096 | 12,732 | 15,279 | 15,915 | 18,080 | |
| 3 1/2 | 4,365 | 4,911 | 5,457 | 6,002 | 6,548 | 7,094 | 7,639 | 8,185 | 8,731 | 9,276 | 9,822 | 10,368 | 10,913 | 13,096 | 13,642 | 15,497 | |
| 4 | 3,820 | 4,297 | 4,775 | 5,252 | 5,730 | 6,207 | 6,685 | 7,162 | 7,640 | 8,117 | 8,594 | 9,072 | 9,549 | 11,459 | 11,937 | 13,560 | |
| 5 | 3,056 | 3,438 | 3,820 | 4,202 | 4,584 | 4,966 | 5,348 | 5,730 | 6,112 | 6,494 | 6,875 | 7,257 | 7,639 | 9,167 | 9,549 | 10,848 | |
| 6 | 2,546 | 2,865 | 3,183 | 3,501 | 3,820 | 4,138 | 4,456 | 4,775 | 5,093 | 5,411 | 5,730 | 6,048 | 6,366 | 7,639 | 7,958 | 9,040 | |
| 7 | 2,183 | 2,456 | 2,728 | 3,001 | 3,274 | 3,547 | 3,820 | 4,093 | 4,365 | 4,638 | 4,911 | 5,184 | 5,457 | 6,548 | 6,821 | 7,749 | |
| 8 | 1,910 | 2,149 | 2,387 | 2,626 | 2,865 | 3,104 | 3,342 | 3,581 | 3,820 | 4,058 | 4,297 | 4,536 | 4,775 | 5,730 | 5,968 | 6,780 | |
| 9 | 1,699 | 1,910 | 2,122 | 2,334 | 2,546 | 2,759 | 2,971 | 3,183 | 3,395 | 3,608 | 3,820 | 4,032 | 4,244 | 5,093 | 5,305 | 6,027 | |

THIS IS YOUR RESPONSIBILITY

Always read and understand the safety information supplied with the tool and on www.atlascopco.com. All locally legislated safety rules regarding installation, operation and maintenance shall be respected at all times.

1. Check the free speed

- The measured speed at a pressure of 6.3 bars must not exceed the rated speed, which is marked on the grinder.
- Remove the grinding wheel and outer flange before checking the free speed.
- Carry out checks daily.
- Make sure the speed marking on the tool is legible.
- Return the machine for repair in the event of overspeeding.



2. Check the wheel guard

The wheel guard protects your health and safety.

- Always use the recommended wheel guard.
- Check that it is not damaged.
- Never use a grinder without the wheel guard.
- Position the wheel guard between yourself and the grinding wheel.

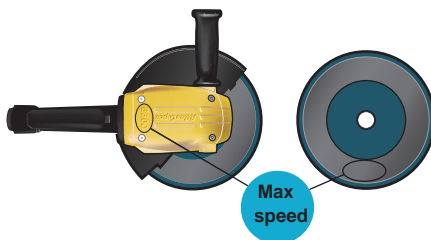


Check that the trigger is working correctly.

- The trigger must never be removed or fixed by tape for example.
- If the trigger is not working properly, make sure that it is replaced.

3. Maximum speed

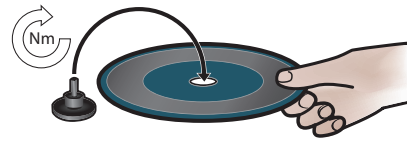
Make sure that the stated maximum speed of the grinding wheel is greater than or equal to the speed specified on the grinder.



4. Check the grinding wheel

Make sure that the grinding wheel is not cracked or damaged in any way.

- The grinding wheel should have the correct hole dimensions and be fitted correctly on the spindle to avoid unbalanced vibrations.
- Damaged grinding wheels must be removed and replaced immediately.
- Do not use dropped or damaged wheels, as these can cause serious injuries.



5. Check the flange and wheel

Make sure that flange and wheel combinations correspond to national regulations.

- Check that the flanges are undamaged and clean.
- Attach the wheel with the recommended torque.
- Always disconnect the air-supply when changing the wheel or adjusting the tool.
- Test-run your grinder in a protected area after assembling the wheel.
- Check that the grinder is working correctly.

6. Personal protection equipment

Make sure that operators wear:

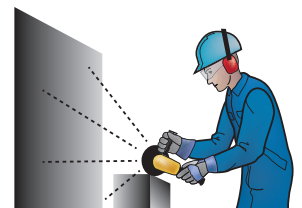
- Eye protection, goggles or a visor.
- Ear protection.
- Gloves.
- Steel toe-capped shoes.
- Protective clothing, such as a leather apron.
- A helmet (for heavier applications).
- Avoid loosely hanging clothing, hair, jewellery (risk of getting caught).



7. Working area

Ensure that the area in which you are working is kept free from other people so that no one can get injured.

- People nearby must also wear hearing and eye protection.
- Check that there is good ventilation and dust extraction from the premises.
- There should be a stand or a place available, on which the machine can be safely placed.
- Work within a sealed-off area, if possible with protecting walls, since there is a risk that broken discs could fly off.



During work

Stop using the grinder if abnormally loud noises and vibrations occur during use. The grinder and its accessories must not be modified in any way.

After the work is finished

Make sure the machine is switched off and has come to a complete stop before it is put down. Put down the tool carefully, so that there is no risk of the tool starting by itself.



Maintenance

Make sure you follow the service instructions provided and the recommended service intervals. Do not dismantle safety-related parts such as the speed governor and overspeed shut off. These parts should be completely replaced when damaged.

TURBINE TECHNOLOGY BOOSTS PRODUCTIVITY

More efficient than a conventional vane grinder motor, the 2 stage turbine motor in the GTG25 provides an extremely high efficiency leading to great rate of material removal on the roughest surfaces. A speed governor ensures optimum process speed and process time is cut to a minimum. Since the job is done faster, the total energy consumption is significantly lower for each job.

REDUCES OPERATOR STRAIN

The GTG25 is ergonomically designed in every aspect. Its high power-to-weight ratio, 3.4 hp of power in a 5.07 lb tool, makes grinding much easier for the user. Combined with other GTG25 features, for example, an ergonomic angled throttle handle and an autobalancer to minimize vibrations, the overall result is less strain on the operator.



GTG25 F120-527



GTG25 F085-727

HIGHLY SERVICE FRIENDLY

With its all-metal design, the GTG25 turbine grinder is a robust, durable tool. Service intervals are long and servicing is easy thanks to modular internal components and Service Kits from Atlas Copco.

| Model | Max free speed r/min | For wheel dia in | Spindle thread | Max output hp | Weight lb | Height over spindle in | Air consumption at max output | | Rec. hose size | | Air inlet thread NPT | Ordering No. |
|-------------------------------------|----------------------|------------------|----------------|---------------|-----------|------------------------|-------------------------------|-----|----------------|-----|----------------------|--------------|
| | | | | | | | cfm | cfm | mm | in | | |
| For grinding and cutting off | | | | | | | | | | | | |
| GTG25 F120-527 | 12000 | 5 | 5/8-11 | 3.4 | 5.07 | 2.3 | 67.8 | 19 | 16 | 5/8 | 3/8 | 8423 2525 06 |
| GTG25 F085-727 | 8500 | 7 | 5/8-11 | 3.4 | 5.29 | 2.3 | 67.8 | 19 | 16 | 5/8 | 3/8 | 8423 2525 07 |
| For sanding | | | | | | | | | | | | |
| GTG25 S085-700 | 8500 | 7 | 5/8-11 | 3.4 | 4.2 | 2.3 | 67.8 | 19 | 16 | 5/8 | 3/8 | 8423 2525 08 |
| GTG25 S060-700 | 6000 | 7 | 5/8-11 | 3.4 | 4.2 | 2.3 | 67.8 | 19 | 16 | 5/8 | 3/8 | 8423 2525 22 |

TOOL ACCESSORIES

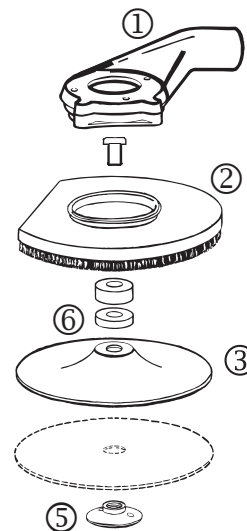
| Model | Ordering No. |
|-----------------------------|--------------|
| Whip-hose (incl.) | 4175 0738 91 |
| Exhaust hose | 4150 1532 95 |
| Spot suction kit for sander | 3780 4090 27 |

AIR LINE ACCESSORIES

| Model | Ordering No. |
|----------------------|--------------|
| MultiFlex | 8202 1350 28 |
| Claw coupling | 9000 0262 00 |
| HM Open XL hose reel | 8202 1183 50 |

SPOT SUCTION KIT FOR SANDING WITH FIBRE DISC

| Model | Ordering No. |
|---------------------------------|--------------|
| KIT 7" | 3780 4007 90 |
| 1 Chamber | 3780 3100 40 |
| 2 Suction cap 180 mm with brush | 3780 2675 00 |
| 3 Backing pad 180 mm | 3780 2710 60 |
| 6 Distance washer 9 mm | 3780 2721 50 |
| 5 Nut 5/8" | 3780 2726 70 |



Productivity Kits

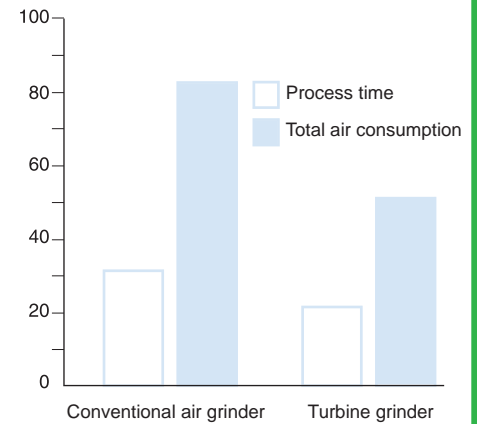
| Model | Max air flow | Hose 16.4 ft | Coupling | Lubrication | Ordering No. |
|--------------------------------|--------------|--------------|--------------|-------------|--------------|
| MIDI Optimizer F/RD EQ15US-T16 | 85 cfm | Turbo 16 | ErgoQIC 15US | Yes | 8202 0850 31 |

The GTG/GTR40 are the most powerful grinders in the turbine grinder range, with incredible power for their size and weight. The range includes angle and straight type grinders for virtually every common rough grinding application.

- For rough grinding and cutting off with depressed center wheels.
- For surface finishing with coated abrasives and wire brushes.
- For rough grinding with cup wheels.
- GTR40 – for rough grinding and applications such as internal and external cleaning of castings with straight grinding wheels.
- Dust extraction – Efficient accessory and standard model for extraction of air-borne dust in sanding applications with fiber discs.



MORE EFFECTIVE



The turbine motor is more efficient than a conventional grinder motor. Therefore it takes less time to do the same job. Also the total air consumption will be a lot less for a specific job.

| Model | Max free speed r/min | Max wheel dia in | Max output hp | Weight lb | Height over spindle in | Air consumption at | | Hose size in | Air inlet thread NPT | Spindle thread in | Ordering No. |
|---|-------------------------|---------------------|------------------|--------------|---------------------------|--------------------|-------------------|-----------------|-------------------------|----------------------|--------------|
| | | | | | | max output cfm | free speed cfm | | | | |
| For depressed center wheels, type 27 | | | | | | | | | | | |
| GTG40 S060-927 | 6000 | 9 | 6.1 | 9.5 | 5.2 | 126 | 42 | 5/8 | 1/2 | UNC 5/8 | 8423 0715 05 |
| GTG40 S060-727 | 6000 | 7 | 6.1 | 9.5 | 5.2 | 126 | 42 | 5/8 | 1/2 | UNC 5/8 | 8423 0715 07 |
| GTG40 S077-727 | 7700 | 7 | 6.1 | 9.5 | 5.2 | 126 | 42 | 5/8 | 1/2 | UNC 5/8 | 8423 0715 09 |
| GTG40 S085-727 | 8500 | 7 | 6.1 | 9.5 | 4.8 | 126 | 42 | 5/8 | 1/2 | UNC 5/8 | 8423 0715 10 |
| For cup wheel, type 11 | | | | | | | | | | | |
| GTG40 S060-611 | 6000 | 6 | 6.1 | 10.1 | 5.2 | 126 | 42 | 5/8 | 1/2 | UNC 5/8 | 8423 0715 00 |
| GTG40 F072-611 | 7200 | 5 | 6.1 | 10.1 | 5.2 | 126 | 42 | 5/8 | 1/2 | UNC 5/8 | 8423 0715 20 |
| For sanding | | | | | | | | | | | |
| GTG40 S060-900 | 6000 | 9 | 6.1 | 7.9 | 5.2 | 126 | 42 | 5/8 | 1/2 | UNC 5/8 | 8423 0715 02 |
| GTG40 S060-700 | 6000 | 7 | 6.1 | 7.9 | 5.2 | 126 | 42 | 5/8 | 1/2 | UNC 5/8 | 8423 0715 03 |

| Model | Max. free speed r/min | Rec. wheel diam. DxTxH in | Spindle | | Max output hp | Weight incl. guard flanges lb | Length in | Air consumption at | | Air inlet thread NPT | Rec. air hose in | Ordering No. |
|----------------|--------------------------|---------------------------------|--------------|--------------|------------------|-------------------------------------|--------------|--------------------|-------------------|-------------------------|---------------------|--------------|
| | | | thread in | length in | | | | max output cfm | free speed cfm | | | |
| GTR40 S085-601 | 8500 | 6x1x1 | UNC 5/8 | 2.2 | 6.1 | 12.3 | 22.1 | 126 | 42 | 1/2 | 5/8 | 8423 0715 11 |
| GTR40 S072-501 | 7200 | 5x1x1 | UNC 5/8 | 2.2 | 6.1 | 12.3 | 22.1 | 126 | 42 | 1/2 | 5/8 | 8423 0715 13 |
| GTR40 S060-601 | 6000 | 6x1x1 | UNC 5/8 | 2.2 | 6.1 | 12.8 | 22.1 | 126 | 42 | 1/2 | 5/8 | 8423 0715 15 |
| GTR40 S060-801 | 6000 | 8x1x1 | UNC 5/8 | 2.2 | 6.1 | 12.8 | 22.1 | 126 | 42 | 1/2 | 5/8 | 8423 0715 17 |

Accessories Included

GTG40

Adjustable wheel guard
 Support handle
 Attachment flanges
 Whip hose 2 ft long, 5/8" dia complete with nipple
 Gear box oil, one tube
 Hex key for wheel change

GTR40

Wheel guard
 Attachment flanges
 Whip hose 2 ft long, 5/8" dia complete with nipple
 Gear box oil, one tube
 Key and spanner for wheel change

Optional Accessories

GTG40

| | Ordering No. |
|--|---------------------------|
| Heavy duty backing pad for sanding Ø 180 mm (7") | 4170 1192 90 |
| Ø 230 mm (9") | 4170 1193 90 |
| Hand shield | 4175 0165 90 |
| Adapter for positioning support handle 120/135° between handles | 4175 0164 90 ^a |
| Adapter kit fibre disc | 4175 0238 90 |
| Dust extraction kit for 180 mm fiber disc GTG40 S060-700 | 3780 4090 11 ^a |
| Hose kit including 1.8 m vacuum hose, Ø 38 mm and air hose Ø 13 mm | 3780 2724 41 |
| Attachment nut for cup wheel with plane hole | 4175 0178 90 |

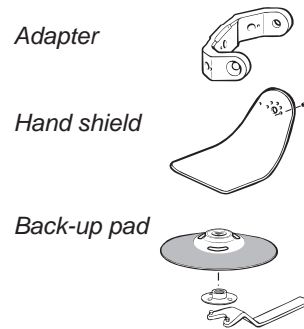
^a Incl. flow chamber, suction cap and support pad.

^b Included as standard in GTG40 S060-611.

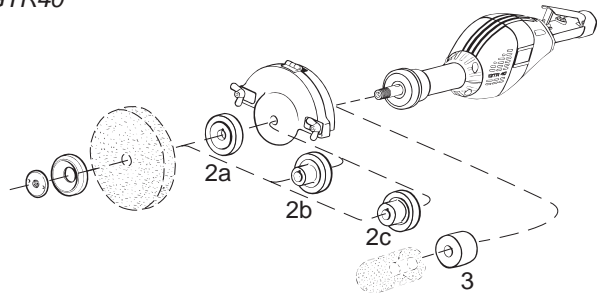
GTR40

| | Thickness x Hole dia in | See illustration | Ordering No. |
|-----------------------|-------------------------|------------------|--------------|
| Rear flange | 3/4-1 x 5/8 | 2a | 4150 0619 00 |
| | | 2a | 4150 0713 00 |
| | | 2b | 4150 1650 00 |
| | | 2c | 4150 0620 00 |
| Spacer for cone wheel | x 1 1/4 | 3 | 4150 0787 00 |

GTG40



GTR40



Productivity Kits

| Model | Max air flow | Hose 16.4 ft | Coupling | Lubrication | Ordering No. |
|----------------------|--------------|--------------|--------------|-------------|--------------|
| MAXI F/R EQ15US-T20 | 140 cfm | Turbo 16 | ErgoQIC 15US | No | 8202 0850 32 |
| MAXI F/RD EQ15US-T20 | 140 cfm | Turbo 16 | ErgoQIC 15US | Yes | 8202 0850 33 |

NOTE: Tool nipple is not included in the Productivity kit and needs to be order separately together with the tool.



Service Kits

GTG40 4081 0153 90
 GTR40 4081 0153 91

- LSF07 is a high speed model for precision grinding and polishing. LSF07 is delivered with a 1/8" collet and can be equipped with a 3 mm collet as optional.
- LSF12/LSV12 – Small and comfortable die grinder with up to 0.5 hp for maximum control in cramped spaces. All models are delivered with speed governor and a well balanced 1/4" Erickson collet.
- LSF19/LSV19 – All models in the 19 series are equipped with a powerful 0.67 hp air motor and a speed governor. LSF versions have scatter damping, for less vibrations. The angled models (LSV) have a patented solution that overcomes temperature and leakage problems commonly associated with angle head tools. The result is a leak free and self-cooled angle head. All models are lubrication free except for the high speed model LSF19 S460.
- LSF28 – Powerful 1.2 hp air motor, with speed governor and scatter damping. Impressive power-to-weight ratio.
- LSF38 – One of the most powerful one-hand die grinders on the market with up to 1.7 hp. If you are looking for



a tool that can boost your productivity and save you money, the LSF38 is the right tool! The die grinders in the 38

series are lubrication free with scatter damping for maximum operator comfort and safety.

| Model | Max free speed r/min | Rec max dia of | | Max output hp | Weight lb | Length in | Air consumption | | Rec. hose size | | Air inlet thread NPT | Ordering No. |
|-----------------------------------|----------------------|---------------------------|------------------|---------------|-----------|-----------|-------------------|-------------------|----------------|------|----------------------|--------------|
| | | Tungsten carbide burrs in | Mounted point mm | | | | at max output cfm | at free speed cfm | mm | in | | |
| Straight models | | | | | | | | | | | | |
| LSF12 S180-2 ^a | 18000 | 1/2 | 20 | 0.28 | 0.8 | 6.7 | 15 | 5 | 8 | 5/16 | 1/4 | 8423 0701 00 |
| LSF12 S200-2 ^a | 20000 | 1/2 | 20 | 0.32 | 0.8 | 6.7 | 17 | 5 | 8 | 5/16 | 1/4 | 8423 0701 01 |
| LSF12 S250-2 ^a | 25000 | 1/2 | 20 | 0.39 | 0.8 | 6.7 | 18 | 7 | 8 | 5/16 | 1/4 | 8423 0701 02 |
| LSF12 S310-2 ^a | 31000 | 1/2 | 20 | 0.43 | 0.8 | 6.7 | 19 | 9 | 8 | 5/16 | 1/4 | 8423 0701 03 |
| LSF12 S400-2 ^a | 40000 | 3/8 | 16 | 0.48 | 0.8 | 6.7 | 21 | 15 | 8 | 5/16 | 1/4 | 8423 0701 04 |
| LSF19 S460-2 ^a | 46000 | 3/8 | 16 | 0.68 | 1.2 | 7.6 | 24 | 31 | 10 | 3/8 | 1/4 | 8423 0703 70 |
| LSF19 S300-2 | 30000 | 1/2 | 20 | 0.67 | 1.2 | 7.6 | 23 | 14 | 10 | 3/8 | 1/4 | 8423 0703 71 |
| LSF19 S200-2 | 20000 | 1/2 | 20 | 0.67 | 1.2 | 7.6 | 20 | 7 | 10 | 3/8 | 1/4 | 8423 0703 72 |
| LSF19 S200E-2 | 30000 | 1/2 | 20 | 0.67 | 1.5 | 11.5 | 20 | 7 | 10 | 3/8 | 1/4 | 8423 0703 73 |
| LSF19 S300E-2 | 30000 | 1/2 | 20 | 0.67 | 1.5 | 11.5 | 23 | 14 | 10 | 3/8 | 1/4 | 8423 0703 74 |
| LSF28 S250-2 ^a | 25000 | 1/2 | 32 | 1.2 | 1.7 | 8.3 | 39 | 23 | 13 | 1/2 | 3/8 | 8423 0702 07 |
| LSF28 S250E-2 ^a | 25000 | 1/2 | 32 | 1.2 | 2.8 | 13.2 | 39 | 23 | 13 | 1/2 | 3/8 | 8423 0702 08 |
| LSF28 S180-2 | 18000 | 5/8 | 40 | 1.1 | 1.7 | 8.3 | 37 | 15 | 13 | 1/2 | 3/8 | 8423 0702 09 |
| LSF28 S180E-2 | 18000 | 5/8 | 40 | 1.1 | 2.7 | 13.2 | 37 | 15 | 13 | 1/2 | 3/8 | 8423 0702 10 |
| LSF28 S150-2 | 15000 | 5/8 | 40 | 0.9 | 1.7 | 8.3 | 32 | 12 | 13 | 1/2 | 3/8 | 8423 0702 15 |
| LSF28 S120-2 | 12000 | 5/8 | 40 | 0.9 | 1.7 | 8.3 | 29 | 8 | 13 | 1/2 | 3/8 | 8423 0702 16 |
| LSF38 S250E ^a | 25000 | 5/8 | 40 | 1.8 | 3.3 | 13.8 | 58 | 53 | 13 | 1/2 | 3/8 | 8423 0700 31 |
| LSF38 S180E | 18000 | 5/8 | 40 | 1.8 | 3.3 | 13.8 | 58 | 31 | 13 | 1/2 | 3/8 | 8423 0700 28 |
| LSF38 S150E | 15000 | 5/8 | 40 | 1.8 | 3.3 | 13.8 | 50 | 27 | 13 | 1/2 | 3/8 | 8423 0700 37 |
| Angle models | | | | | | | | | | | | |
| LSV12 S120-2 ^a | 12000 | 1/2 | 20 | 0.33 | 1.2 | 6.5 | 18 | 6 | 8 | 5/16 | 1/4 | 8423 0701 05 |
| LSV12 S200-2 ^a | 20000 | 1/2 | 20 | 0.39 | 1.2 | 6.5 | 20 | 14 | 8 | 5/16 | 1/4 | 8423 0701 06 |
| LSV19 S200-2 | 20000 | 1/2 | - | 0.6 | 1.3 | 7.3 | 23 | 15 | 10 | 3/8 | 1/4 | 8423 0703 75 |
| LSV19 S120-2 | 12000 | 1/2 | - | 0.6 | 1.3 | 7.3 | 23 | 15 | 10 | 3/8 | 1/4 | 8423 0703 76 |
| LSV19 S080-2 | 8000 | 1/2 | - | 0.5 | 1.3 | 7.3 | 23 | 13 | 10 | 3/8 | 1/4 | 8423 0703 77 |
| Die grinders for polishing | | | | | | | | | | | | |
| LSF28 ST030-2 | 3000 | - | - | 0.9 | 2.6 | 10.8 | 38 | 18 | 10 | 3/8 | 3/8 | 8423 0702 22 |
| LSF28 ST070-2 ^a | 7000 | - | - | 1.0 | 2.6 | 10.8 | 40 | 26 | 10 | 3/8 | 3/8 | 8423 0702 17 |
| LSF28 ST070E-2 ^a | 7000 | - | - | 1.0 | 3.9 | 15.7 | 40 | 26 | 10 | 3/8 | 3/8 | 8423 0702 18 |
| High speed model | | | | | | | | | | | | |
| LSF07 S850 ^a | 88000 | 1/6 | 6 | 0.10 | 0.9 | 6.7 | 4.9 | 4.6 | 4.5 | 3/16 | - | 8423 1222 03 |

^a Not lubrication free.
E = Extended version, flexible spindle

Accessories Included

LSF07

Air hose
ErgoNIP 08
Collet 1/8" (See ill. 1)

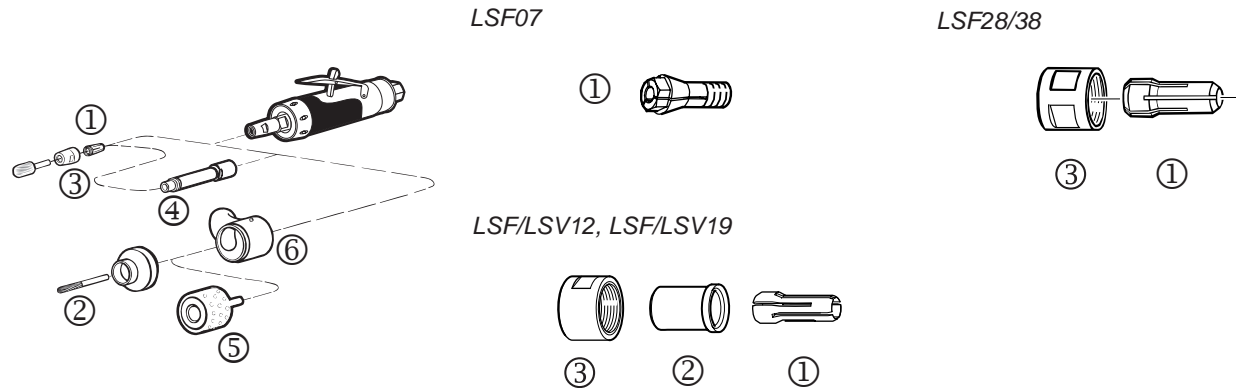
LSF/LSV12, LSF/LSV19, LSF28

Spanner
Collet 1/4" (See ill. 1)
Air hose, air hose nipple and clamp
Exhaust hose

LSF38

Air hose nipple
Collet 1/4" (See ill. 1)

Optional Accessories



| | LSF07 | LSF/LSV12 | LSF/LSV19 | LSF28 | LSF38 | See ill. |
|---|--------------|--------------|--------------|--------------|--------------|----------|
| Optional collets | | | | | | |
| 3 mm | 4150 1800 00 | - | - | - | - | 1 |
| 1/8" | 4150 1822 00 | 4150 2226 46 | 4150 1710 00 | - | - | 1 |
| 1/4" | - | 4150 2226 03 | 4112 1077 00 | 4150 1709 00 | 4150 1709 00 | 1 |
| 3/8" | - | - | - | - | 4150 1708 00 | 1 |
| Collar | - | 4150 2226 02 | 4112 1078 00 | - | - | 2 |
| Collet nut | - | 4150 2226 04 | 4112 1076 00 | 4150 1706 00 | 4150 1706 00 | 3 |
| For machining of plastic and glas fibre | | | | | | |
| Spot suction kit burr (burr not included) | - | 3780 3015 23 | 3780 3015 22 | 3780 4007 42 | - | 6 |
| Diamond burr Ø 6 mm (1/4") | - | 3780 5013 70 | 3780 5013 70 | 3780 5013 70 | - | 2 |
| Spot suction kit drum (drum not included), for use with 8 mm (5/16") collet | - | - | 3780 4011 61 | 3780 4011 73 | - | 6 |
| Diamond drum Ø 52 mm (2 1/16") | - | - | 3780 5033 00 | 3780 5035 00 | - | 5 |

Productivity Kits

| Model | Max air flow | Hose 16.4 ft | Coupling | Lubrication | Ordering No. |
|--------------------------------|--------------|--------------|--------------|-------------|--------------|
| MIDI Optimizer F/RD EQ10US-T13 | 65 cfm | Turbo 13 | ErgoQIC 10US | Yes | 8202 0850 29 |
| MIDI Optimizer F/R EQ10US-T13 | 65 cfm | Turbo 13 | ErgoQIC 10US | No | 8202 0850 30 |

NOTE: Tool nipple is not included in the Productivity kit and needs to be order separately together with the tool.



Service Kits

| | |
|-----------|--------------|
| 07 series | 4081 0243 90 |
| 12 series | 4081 0472 90 |
| 19 series | 4081 0488 90 |
| 28 series | 4081 0315 90 |
| 38 series | 4081 0308 90 |

Atlas Copco straight grinders for cone wheel or collet, are suitable for grinding in holes and cavities in castings, etc. They require rough abrasives, which must be attached to the tool with a rigid shank or be mounted directly to the spindle.

The power ranges from 0.9 hp to 2.4 hp. All Atlas Copco tools are designed with focus on operator ergonomics and maximum power, the best combination for maximum productivity.

- The LSR38 is suitable for lighter applications where accessibility is first priority.
- If you need maximum power, then LSR48 is the natural choice. You will have access to 2.4 hp in combination with auto balancer for even less vibrations. All packed in a strong and light package.



LSR38 CW



LSR48 CW

| Model | Max free speed r/min | Rec. wheel diameter in | Max output hp | Weight lb | Length in | Air consumption | | Rec. hose size in | Spindle thread and length in | Air inlet thread NPT | Ordering No. |
|-----------------|----------------------|------------------------|---------------|-----------|-----------|-------------------|-------------------|-------------------|------------------------------|----------------------|--------------|
| | | | | | | at max output cfm | at free speed cfm | | | | |
| LSR38 S150-CW | 15000 | 2 3/8 | 1.8 | 3.5 | 12.6 | 50 | 27 | 1/2 | UNF 3/8x14 | 3/8 | 8423 0700 29 |
| LSR38 S180-CW | 18000 | 2 | 1.8 | 3.5 | 12.6 | 58 | 31 | 1/2 | UNF 3/8x14 | 3/8 | 8423 0700 30 |
| LSR38 S150-CW/2 | 15000 | 2 3/8 | 1.8 | 3.5 | 12.6 | 50 | 27 | 1/2 | UNC 5/8x21 | 3/8 | 8423 0700 33 |
| LSR38 S120-CW/2 | 12000 | 2 | 1.8 | 3.5 | 12.6 | 58 | 31 | 1/2 | UNC 5/8x21 | 3/8 | 8423 0700 35 |
| LSR48 S120-CW | 12000 | 2 | 2.4 | 5.0 | 17.6 | 64 | 28 | 1/2 | UNC 5/8x21 | 1/2 | 8423 0708 02 |

Accessories Included

LSR38 CW

Exhaust air hose (1.1 ft)
 Hose clamp
 Open end spanner
 For -CW: UNF 3/8" (See ill. 1)
 For -CW/2: UNC/W 5/8" (See ill. 1)

LSR48 CW

Whip hose
 Wrench
 Cone wheel adapter UNC 5/8"-11,
 (See ill. 2)

Optional Accessories

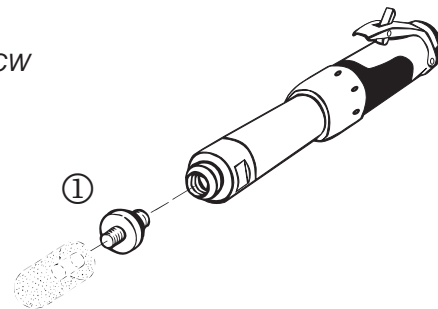
LSR38

| | See illustration | Ordering No. |
|---|------------------|--------------|
| Adapter for cone wheel with thread | | |
| UNC/W 3/8" | 1 | 4150 0318 00 |
| UNF 3/8" | 1 | 4150 0318 01 |
| UNC 1/2" | 1 | 4150 1357 00 |
| UNC/W 5/8" | 1 | 4150 0767 00 |

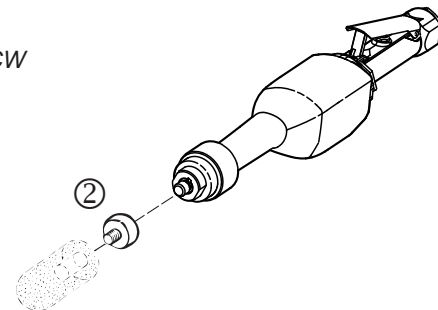
LSR48

| | See illustration | Ordering No. |
|---|------------------|--------------|
| Adapter for cone wheel with thread | | |
| UNC/W 5/8" | 2 | 4150 0945 01 |

LSR38-CW



LSR48-CW



Productivity Kits

| Model | Max air flow | Hose 16.4 ft | Coupling | Lubrication | Ordering No. |
|--------------------------------|--------------|--------------|--------------|-------------|--------------|
| MIDI Optimizer F/RD EQ10US-T13 | 65 cfm | Turbo 13 | ErgoQIC 10US | Yes | 8202 0850 29 |
| MIDI Optimizer F/R EQ10US-T13 | 65 cfm | Turbo 13 | ErgoQIC 10US | No | 8202 0850 30 |

NOTE: Tool nipple is not included in the Productivity kit and needs to be order separately together with the tool.



Service Kits

| | |
|-----------|--------------|
| 28 series | 4081 0315 90 |
| 38 series | 4081 0311 90 |
| 48 series | 4081 2023 90 |

No matter which of our vane grinders you choose you will get durable tools with high power and low weight. In addition, vibrations and noise are on a low level.

- LSV19 – For work in cramped spaces, the LSV19 series is small yet powerful, and lubrication free.
Features: Speed governor, sealed angle head, thermally insulated handle and lubrication-free air motor.
- LSV28 – Small, yet powerful giving 1 hp. Available in an extended version for optimal accessibility.
Features: Speed governor and thermally insulated handle.
- LSV38 – If you are looking for the most powerful one-hand grinder on the market, then you have found it – up to 1.7 hp.
Features: Speed governor, sealed angle head, lubrication-free air motor, thermally insulated handle, spindle lock and adjustable wheel guard.
- LSV48 – Our most powerful angle vane grinder with 2.5 hp for ultimate productivity.
Features: Speed governor, sealed angle head, lubrication-free air motor, thermally insulated handle and spindle lock. The autobalancer reduces the vibrations by up to 50%.



| Model | Max free speed r/min | Max wheel dia in | Max output hp | Weight lb | Height over spindle in | Air consumption | | Spindle thread and length in | Hose size in | Air inlet thread NPT | Ordering No. |
|-----------------|----------------------|------------------|---------------|-----------|------------------------|-------------------|-------------------|------------------------------|--------------|----------------------|--------------|
| | | | | | | at max output cfm | at free speed cfm | | | | |
| LSV19 S170-327 | 17000 | 3 | 0.6 | 1.6 | 2.8 | 23 | 14 | UNF 3/8x17 | 3/8 | 1/4 | 8423 0705 80 |
| LSV28 ST13-427E | 13000 | 4 | 1.0 | 3.7 | 3.1 | 37 | 16 | UNF 3/8x17 | 3/8 | 3/8 | 8423 0706 00 |
| LSV28 ST12-427 | 12000 | 4 | 1.0 | 3.7 | 3.2 | 37 | 16 | UNF 3/8x18 | 3/8 | 3/8 | 8423 0706 01 |
| LSV38 ST12-427 | 12000 | 4 | 1.7 | 3.5 | 3.3 | 58 | 31 | UNF 3/8x17 | 1/2 | 3/8 | 8423 0700 20 |
| LSV38 ST12-527 | 12000 | 4 1/2-5 | 1.7 | 4.0 | 3.3 | 58 | 31 | UNC 5/8x20 | 1/2 | 3/8 | 8423 0700 22 |
| LSV48 SA120-527 | 12000 | 5 | 2.5 | 5.5 | 3.9 | 76 | 36 | UNC 5/8x21 | 5/8 | 1/2 | 8423 0707 53 |
| LSV48 SA085-727 | 8500 | 7 | 2.5 | 6.2 | 3.9 | 76 | 36 | UNC 5/8x21 | 5/8 | 1/2 | 8423 0707 52 |
| LSV48 SA066-727 | 6600 | 7 | 2.5 | 5.1 | 3.9 | 76 | 36 | UNC 5/8x21 | 5/8 | 1/2 | 8423 0707 54 |

With wheel guard for disc
 -327 = Ø 3"
 -427 = Ø 4"
 -527 = Ø 5" and 4.5"
 -727 = Ø 7"

Selection Guide

HOW TO CHOOSE YOUR LSV38

| | LSV38 ST12-427 | LSV38 ST12-527 |
|----------------------------|----------------|----------------|
| 1.7 hp air motor | x | x |
| Adjustable guard positions | x | x |
| Lockable spindle | x | x |
| Side handle | x | x |
| Size wheel, inch | 4 | 4.5 and 5 |
| Spindle thread, inch | UNF 3/8 | UNC 5/8 |

Accessories Included

LSV19

Wheel guard
Flanges
Air hose nipple, clamp
Wrenches
Exhaust hose set

LSV28

Wheel guard
Flanges
Air hose, air hose nipple, clamp
Wrenches
Exhaust hose set

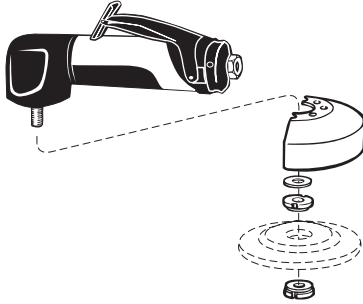
LSV38

Wheel guard
Flanges
Support handle (LSV38 ST-models)
Wrenches
Grease refill

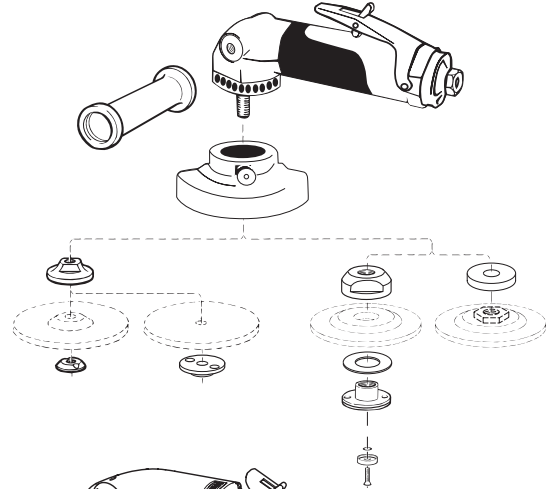
LSV48

Wheel guard
Flanges
Support handle
Wrenches
Grease refill

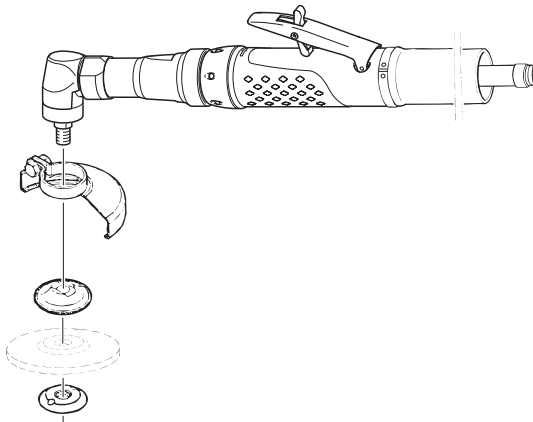
LSV19



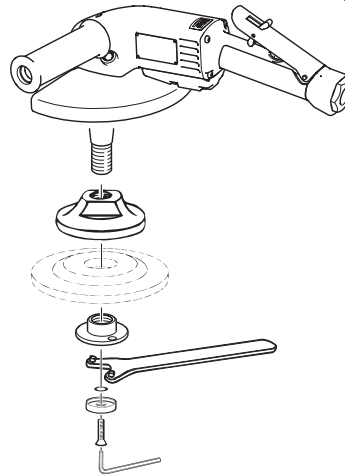
LSV38



LSV28



LSV48



Productivity Kits

| Model | Max air flow | Hose 16.4 ft | Coupling | Lubrication | Ordering No. |
|--------------------------------|--------------|--------------|--------------|-------------|--------------|
| MIDI Optimizer F/RD EQ10US-T13 | 65 cfm | Turbo 13 | ErgoQIC 10US | Yes | 8202 0850 29 |
| MIDI Optimizer F/R EQ10US-T13 | 65 cfm | Turbo 13 | ErgoQIC 10US | No | 8202 0850 30 |
| MIDI Optimizer F/RD EQ15US-T16 | 85 cfm | Turbo 16 | ErgoQIC 15US | Yes | 8202 0850 31 |
| MAXI F/R EQ15US-T20 | 140 cfm | Turbo 16 | ErgoQIC 15US | No | 8202 0850 32 |
| MAXI F/RD EQ15US-T20 | 140 cfm | Turbo 16 | ErgoQIC 15US | Yes | 8202 0850 33 |

NOTE: Tool nipple is not included in the Productivity kit and needs to be order separately together with the tool.



Service Kits

| | |
|-------|--------------|
| LSV19 | 4081 0488 90 |
| LSV28 | 4081 0317 90 |
| LSV38 | 4081 0309 90 |
| LSV48 | 4081 0312 90 |

- LSV12 series** – For finer work where less power and more control are needed. Available with collet or threaded spindle. Features: Speed governor, high quality gears and lever with feathering characteristics.
- LSV19 series** – For work in cramped spaces. Available with collet or threaded spindle versions. Features: Speed governor, sealed angle head and lubrication-free air motor.
- LSV28 series** – The 28 series comes in various speeds. Features: Speed governor, sealed angle head, LF models have lubrication-free air motor.
- LSV38 series** – Powerful one hand sander for medium rough to rough sanding. Features: Speed governor, sealed angle head, lubrication-free air motor and spindle lock.
- LSV48 series** – Our most powerful angle vane sander with 2.5 hp for ultimate productivity. Features: Speed governor, sealed angle head, lubrication-free air motor, autobalancer and spindle lock.



| Model | Max free speed r/min | Rec. pad size dia in | Max output hp | Weight lb | Length in | Height in | Air consumption | | Spindle thread and length in | Rec. hose size in | Air inlet thread NPT | Ordering No. |
|------------------------------|----------------------|----------------------|---------------|-----------|-----------|-----------|-------------------|-------------------|------------------------------|-------------------|----------------------|--------------|
| | | | | | | | at max output cfm | at free speed cfm | | | | |
| With collet | | | | | | | | | | | | |
| LSV12 S200-2 | 20000 | 2 | 0.39 | 1.2 | 6.5 | 3.0 | 17.6 | 6.4 | – ^a | 5/16 | 1/4 | 8423 0701 06 |
| LSV12 S120-2 | 12000 | 3 | 0.33 | 1.2 | 6.5 | 3.0 | 17.6 | 6.4 | – ^a | 5/16 | 1/4 | 8423 0701 05 |
| LSV19 S200-2 | 20000 | 2 | 0.6 | 1.3 | 7.3 | 3.0 | 23 | 15 | – ^a | 3/8 | 1/4 | 8423 0703 75 |
| LSV19 S120-2 | 12000 | 3 | 0.6 | 1.3 | 7.3 | 3.0 | 23 | 15 | – ^a | 3/8 | 1/4 | 8423 0703 76 |
| LSV19 S080-2 | 8000 | 3 | 0.5 | 1.3 | 7.3 | 3.0 | 23 | 13 | – ^a | 3/8 | 1/4 | 8423 0703 77 |
| With threaded spindle | | | | | | | | | | | | |
| LSV12 S200 | 20000 | 2 | 0.39 | 1.2 | 6.5 | 2.3 | 17.6 | 6.4 | UNC 1/4x5/16 | 5/16 | 1/4 | 8423 0701 08 |
| LSV12 S120 | 12000 | 3 | 0.33 | 1.2 | 6.5 | 2.3 | 17.6 | 6.4 | UNC 1/4x5/16 | 5/16 | 1/4 | 8423 0701 07 |
| LSV19 S120 | 12000 | 3 | 0.6 | 1.3 | 7.3 | 2.3 | 23 | 15 | UNC 1/4x8 | 3/8 | 1/4 | 8423 0703 78 |
| Dry sanding | | | | | | | | | | | | |
| LSV28 S085 | 8500 | 7 | 1.0 | 3.2 | 10.4 | 3.4 | 46 | 29 | UNC 5/8x32 | 3/8 | 3/8 | 8423 0706 12 |
| LSV28 S060 LF | 6000 | 7 | 1.0 | 3.2 | 10.4 | 3.4 | 34 | 16 | UNC 5/8x32 | 3/8 | 3/8 | 8423 0706 11 |
| LSV28 S040 LF | 4000 | 7 | 0.8 | 3.2 | 10.4 | 3.4 | 32 | 9 | UNC 5/8x32 | 3/8 | 3/8 | 8423 0706 13 |
| LSV28 ST034 | 3400 | 7 | 1.0 | 3.7 | 12.0 | 3.4 | 38 | 16 | UNC 5/8x32 | 3/8 | 3/8 | 8423 0706 15 |
| LSV28 S021 LF | 2100 | 7 | 0.9 | 4.1 | 11.2 | 3.4 | 34 | 12 | UNC 5/8x32 | 3/8 | 3/8 | 8423 0706 14 |
| LSV38 S085 | 8500 | 7 | 1.7 | 3.5 | 8.5 | 3.8 | 58 | 31 | UNC 5/8x23 | 1/2 | 3/8 | 8423 0700 24 |
| LSV38 S066 | 6600 | 7 | 1.6 | 3.5 | 8.5 | 3.8 | 50 | 27 | UNC 5/8x23 | 1/2 | 3/8 | 8423 0700 25 |
| LSV38 S066 D | 6600 | 7 | 1.6 | 3.5 | 8.5 | 3.8 | 50 | 27 | UNC 5/8x28 | 1/2 | 3/8 | 8423 0700 26 |
| LSV48 SA066 | 6600 | 7 | 2.5 | 5.1 | 11.8 | 3.5 | 76 | 36 | UNC 5/8x21 | 5/8 | 1/2 | 8423 0707 50 |
| LSV48 SA085 | 8500 | 7 | 2.5 | 5.1 | 11.8 | 3.5 | 76 | 36 | UNC 5/8x21 | 5/8 | 1/2 | 8423 0707 51 |

Backing pads sold separately.

^a Ø 1/4" collet.

- D = Spot suction kit included.

Orbital and Random Orbital Sanders

Atlas Copco series of random orbital sanders combines all the important customer and application requirements in a very competitive range of products. Applications like sanding before painting and surface coating, polishing with wax and surface conditioner are all quickly done with the small and easily operated LST20-range of sanders.

All models are lubrication free and have silicone free components. They have two grip options in the same handle. In addition, one smaller grip model is included. The full range includes standard models and extraction models. There are also two orbit diameters to choose from in the model range.

- **Lubrication-free** – Avoids contamination of workpiece. No oil in the exhaust air.



| Model | Max free speed r/min | Pad size mm | Orbit dia mm | Max output hp | Weight lb | Height mm | Length mm | Air consumption at free speed cfm | Rec. hose size mm | Air inlet thread NPT | Ordering No. |
|---|----------------------|-------------|--------------|---------------|-----------|-----------|------------------|-----------------------------------|-------------------|----------------------|--------------|
| Random orbital – Standard | | | | | | | | | | | |
| LST30 H090-11 | 9000 | 110 | 8 | 0.4 | 2.6 | 120 | 255 | 16 | 8 | 1/4 | 8423 0361 64 |
| LST30 H090-15 | 9000 | 150 | 8 | 0.4 | 2.6 | 120 | 275 | 16 | 8 | 1/4 | 8423 0361 72 |
| LST30 S090-15 | 9000 | 150 | 8 | 0.4 | 2.4 | 120 | 175 | 16 | 8 | 1/4 | 8423 0361 98 |
| Self suction^a | | | | | | | | | | | |
| LST31 H090-15 | 9000 | 150 | 8 | 0.4 | 3.0 | 120 | 300 | 16 | 8 | 1/4 | 8423 0363 19 |
| Central suction^b | | | | | | | | | | | |
| LST32 H090-15 | 9000 | 150 | 8 | 0.4 | 3.0 | 120 | 300 | 16 | 8 | 1/4 | 8423 0362 55 |
| LST32 S090-15 | 9000 | 150 | 8 | 0.4 | 2.9 | 120 | 200 | 16 | 8 | 1/4 | 8423 0362 71 |
| Orbital – Standard | | | | | | | | | | | |
| LSO30 S070-3 | 7000 | 93x170 | 5 | 0.4 | 3.5 | 125 | 185 | 16 | 8 | 1/4 | 8423 0360 16 |
| LSO30 H070-3 | 7000 | 93x170 | 5 | 0.4 | 3.7 | 125 | 285 | 16 | 8 | 1/4 | 8423 0360 24 |
| Self suction^a | | | | | | | | | | | |
| LSO31 S070-3 | 7000 | 93x170 | 5 | 0.4 | 3.5 | 125 | 210 | 16 | 8 | 1/4 | 8423 0362 79 |
| LSO31 H070-3 | 7000 | 93x170 | 5 | 0.4 | 3.7 | 125 | 310 | 16 | 8 | 1/4 | 8423 0363 03 |
| Central suction^c | | | | | | | | | | | |
| LSO32 H070-3 | 7000 | 93x170 | 5 | 0.4 | 4.0 | 125 | 310 | 16 | 8 | 1/4 | 8423 0361 07 |
| Standard model | | | | | | | | | | | |
| LST20 R350 | 12000 | 90 | 5 | 0.27 | 1.85 | 95 | 127 | 17 | 8 | 1/4 | 8423 0361 65 |
| LST20 R550 | 12000 | 125 | 5 | 0.27 | 1.85 | 83 | 127 | 17 | 8 | 1/4 | 8423 0361 69 |
| LST20 R650 | 12000 | 150 | 5 | 0.27 | 1.85 | 83 | 127 | 17 | 8 | 1/4 | 8423 0361 73 |
| LST20 R525 | 12000 | 125 | 2.4 | 0.27 | 1.85 | 83 | 127 | 17 | 8 | 1/4 | 8423 0361 81 |
| LST20 R625 | 12000 | 150 | 2.4 | 0.27 | 1.85 | 83 | 127 | 17 | 8 | 1/4 | 8423 0361 84 |
| Extraction model – self suction | | | | | | | | | | | |
| LST21 R350 | 12000 | 90 | 5 | 0.27 | 1.85 | 95 | 133 ^d | 17 | 8 | 1/4 | 8423 0361 66 |
| LST21 R550 | 12000 | 125 | 5 | 0.27 | 1.85 | 83 | 133 ^d | 17 | 8 | 1/4 | 8423 0361 70 |
| LST21 R650 | 12000 | 150 | 5 | 0.27 | 1.85 | 83 | 133 ^d | 17 | 8 | 1/4 | 8423 0361 74 |
| LST21 R525 | 12000 | 125 | 2.4 | 0.27 | 1.85 | 83 | 133 ^d | 17 | 8 | 1/4 | 8423 0361 82 |
| LST21 R625 | 12000 | 150 | 2.4 | 0.27 | 1.85 | 83 | 133 ^d | 17 | 8 | 1/4 | 8423 0361 85 |
| Extraction model – central suction^c | | | | | | | | | | | |
| LST22 R350 | 12000 | 90 | 5 | 0.27 | 1.85 | 95 | 133 ^d | 17 | 8 | 1/4 | 8423 0361 67 |
| LST22 R550 | 12000 | 125 | 5 | 0.27 | 1.85 | 83 | 133 ^d | 17 | 8 | 1/4 | 8423 0361 71 |
| LST22 R650 | 12000 | 150 | 5 | 0.27 | 1.85 | 83 | 133 ^d | 17 | 8 | 1/4 | 8423 0361 75 |
| LST22 R650-9 | 12000 | 150 | 5 | 0.27 | 1.85 | 83 | 133 ^d | 17 | 8 | 1/4 | 8423 0361 40 |
| LST22 R325 | 12000 | 90 | 2.4 | 0.27 | 1.85 | 95 | 133 ^d | 17 | 8 | 1/4 | 8423 0361 78 |
| LST22 R525 | 12000 | 125 | 2.4 | 0.27 | 1.85 | 83 | 133 ^d | 17 | 8 | 1/4 | 8423 0361 83 |
| LST22 R625 | 12000 | 150 | 2.4 | 0.27 | 1.85 | 83 | 133 ^d | 17 | 8 | 1/4 | 8423 0361 86 |

^a Includes dust collecting bag.

^b Required air flow 150 m³/h or 88 cfm.

^c Required air flow 60 m³/h or 35 cfm.

^d 186 mm (7.3") suction hose connector included.

H = With handle.

S = Without handle.

All data at 6.3 bar.

-9 Velcro pad, 9 holes.

Accessories Included

LSO

Base pad
Perforating plate
Hose nipple for 8 mm hose
LSO31 including dust collection kit

LST20/21/22

Velcro pad
U-wrench for pad change
Air hose nipple
Dust hose and bag (LST21)
Large and small grip cover

LST30/31/32

Velcro pad
Bar for changing pad
Hose nipple for 8 mm hose
LST31 incl dust collection kit

Optional Accessories

LSO

| For LSO | Ordering No. |
|---|--------------|
| Base pad, vinyl for -3F-type | 4112 0787 01 |
| Suspension yoke | 4112 0975 00 |
| Hose set | |
| Dust hose, for LSO32, Ø 32 mm, L=1.8 m including air hose | 3780 2724 34 |

LST20/21/22, PAD FOR SELF STICK PAPER

| | Ordering No. | | |
|--------------|--------------|--------------|--------------|
| | Dia 89 mm | Dia 125 mm | Dia 150 mm |
| For LST20 | 4112 1231 00 | 4112 1233 00 | 4112 1235 00 |
| For LST21/22 | | 4112 1232 00 | 4112 1234 00 |

LST20/21/22, PAD FOR VELCRO BACK PAPER

| | Ordering No. | | |
|---------------|--------------|--------------|--------------|
| | Dia 89 mm | Dia 125 mm | Dia 150 mm |
| For LST 20 | 4112 1218 00 | 4112 1216 00 | 4112 1214 00 |
| For LST 21/22 | - | 4112 1217 00 | 4112 1215 00 |

LST30/31/32

| | Ordering No. |
|---|---------------------------|
| Pad velcro, Ø 150 mm | 4112 0795 01 ^a |
| Pad velcro, Ø 110 mm | 4112 0792 02 ^b |
| Pad velcro, Ø 150 mm, 6 holes | 4112 0796 00 ^c |
| Suspension yoke | 4112 0975 00 |
| Hose set | |
| Dust hose Ø 32 mm, L=1.8 m including air hose | 3780 2724 34 ^d |

^aLST30-15 ^bLST30/32-11 ^cLST31/32-15 ^dLST32

LST30/31/32, PAD FOR SELF STICK PAPER

| | Ordering No. | | |
|---------------|---------------|--------------|--------------|
| | Dia 110 mm | Dia 125 mm | Dia 150 mm |
| For LST 30 | 41120 7992 00 | 4112 0872 00 | 4112 0793 00 |
| For LST 31/32 | 41120 7992 00 | 4112 0873 00 | 4112 0874 00 |

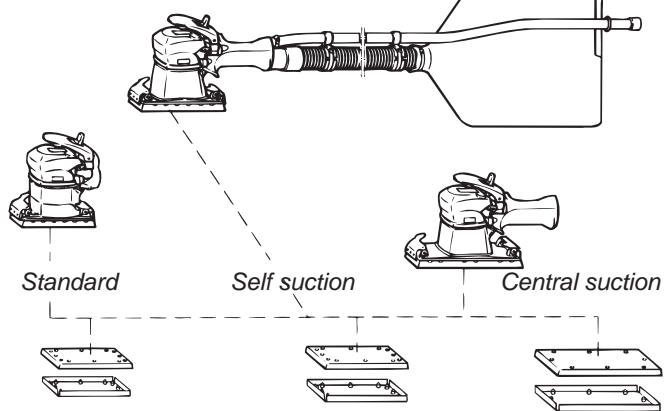


Service Kits

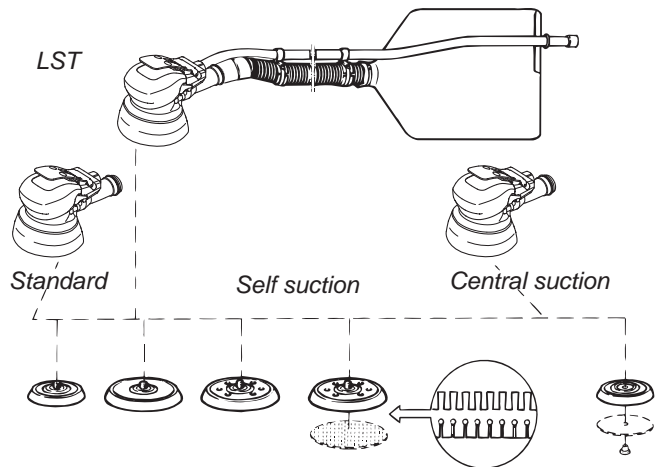
LST20/21/22 4112 1300 90

238 Grinders

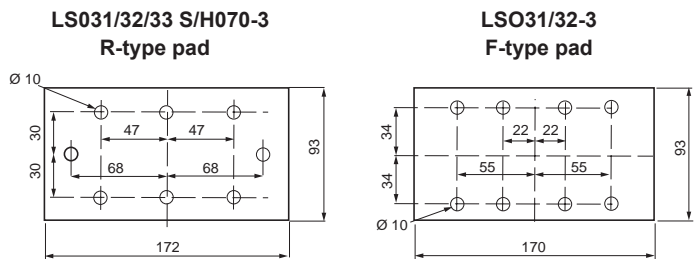
LSO



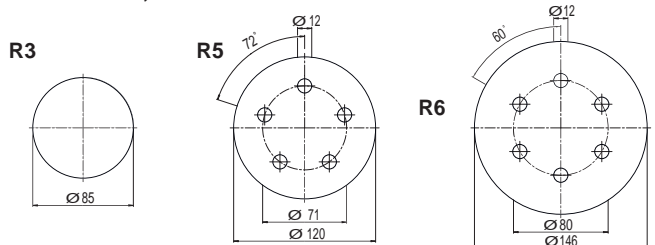
LST



HOLE PATTERN DIMENSIONS FOR SANDING PAPER, DUST EXTRACTION MODELS



LST20/21/22, 30/31/32



Dimension in mm

The fact that dust can represent a hazard in the working environment is well documented.

Dust particles from certain materials are dangerous to health. Even inert dust particles that cause no permanent damage can still be retained in the body and make breathing more difficult. The size of dust particles of most concern are those below 0.005 mm.

Efficient dust control can make a significant contribution to efficiency and productivity in industrial operations. It is already a requirement in countries with strict health and safety regulations.

Efficient dust control will:

- Reduce the health risk for operators exposed to potentially dangerous particles.
- Give a more favourable working environment which will encourage greater efficiency and effort from those who operate industrial tools.

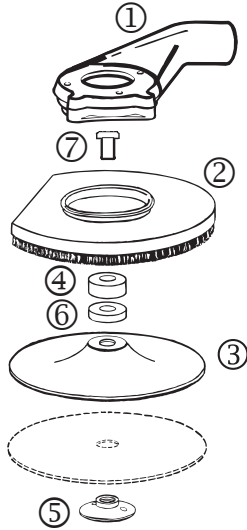
The most efficient method of dust collection is dust extraction at the point of dust creation, i.e. on the tool itself. This not only ensures very efficient extraction but also allows a relatively low power vacuum source to be used.

Atlas Copco spot suction kits provide an extraction hood fixed to the tool. It is fitted with a plastic or brush edge to trap heavier particles as well as the small ones. The following pages show a number of applications and the necessary dust extraction kits with their contents.



LSV28/38/48/GTG40

SPOT SUCTION KIT FOR SANDING WITH FIBER DISC. SANDERS WITH UNC 5/8" SPINDLE.



Suction requirement: 250 m³/h

| | | Ordering No. | |
|---------------------------|----------|---------------------------------|--------------|
| LSV28 S040/S060/S085 5 in | Includes | KIT | 3780 4007 80 |
| | | 1 Chamber | 3780 3100 40 |
| | | 2 Suction cap 125 mm with brush | 3780 2650 20 |
| | | 3 Backing pad 125 mm | 3780 2710 30 |
| | | 4 Distance washer 12 mm | 3780 2721 60 |
| LSV28 ST12-13 5 in | Includes | KIT | 3780 4008 60 |
| | | 1 Chamber | 3780 3101 10 |
| | | 2 Suction cap 125 mm with brush | 3780 2650 20 |
| | | 3 Backing pad 125 mm | 3780 2710 30 |
| | | 6 Distance washer 9 mm | 3780 2721 50 |
| LSV28 S040/S060 7 in | Includes | KIT | 3780 4007 90 |
| | | 1 Chamber | 3780 3100 40 |
| | | 2 Suction cap 180 mm with brush | 3780 2675 00 |
| | | 3 Backing pad 180 mm | 3780 2710 60 |
| | | 6 Distance washer 9 mm | 3780 2721 50 |
| LSV28 S021 7 in | Includes | KIT | 3780 4031 60 |
| | | 1 Chamber | 3780 3101 50 |
| | | 2 Suction cap 180 mm with brush | 3780 2675 00 |
| | | 3 Backing pad | 3780 2710 60 |
| | | 6 Distance washer 12 mm | 3780 2721 60 |
| LSV38 S066 7 in | Includes | KIT^a | 3780 2726 70 |
| | | 1 Chamber | 3780 3103 52 |
| | | 2 Suction cap 180 mm with brush | 3780 2675 00 |
| | | 3 Backing pad 180 mm | 3780 2710 60 |
| | | 6 Distance washer 9 mm | 3780 2721 50 |
| LSV38 S085 5 in | Includes | KIT^a | 3780 4008 85 |
| | | 1 Chamber | 3780 3103 52 |
| | | 2 Suction cap 125 mm with brush | 3780 2650 20 |
| | | 3 Backing pad 125 mm | 3780 2710 30 |
| | | 6 Distance washer 9 mm | 3780 2721 50 |
| LSV48 SA066 7 in | Includes | KIT | 3780 4093 40 |
| | | 1 Chamber | 3780 3103 51 |
| | | 2 Suction cap 180 mm with brush | 3780 2675 00 |
| | | 3 Backing pad 180 mm | 3780 2710 60 |
| | | 5 Flange nut 5/8" | 3780 2726 70 |
| GTG40 S060 7 in | Includes | KIT | 3780 4090 11 |
| | | 1 Chamber | 3780 3180 10 |
| | | 2 Suction cap 180 mm with brush | 3780 2675 31 |
| | | 3 Backing pad 180 mm | 3780 2710 60 |
| | | 5 Flange nut 5/8" | 3780 2722 00 |

^a Use with adapter, Ordering No. 4150 1928 90, to be ordered separately.

VACUUM HOSE, 5.9 FT

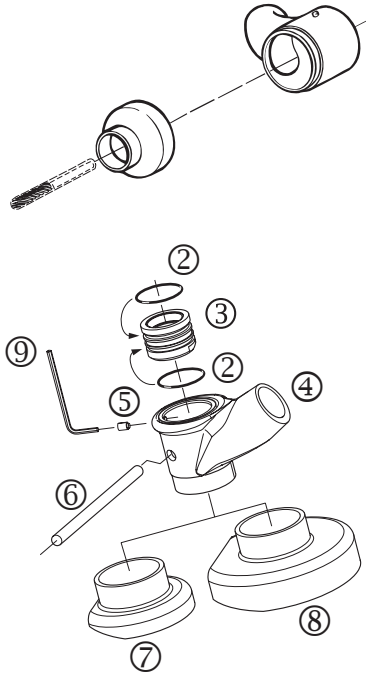
| Hose | Ordering No. |
|---|--------------|
| Ø 1" (25 mm) for 74 cfm (125 m ³ /h) suction requirement | 3780 2724 20 |
| Ø 1 9/32" (32 mm) for 118 cfm (200 m ³ /h) suction requirement | 3780 2724 31 |
| Ø 1 1/2" (38 mm) for 147 cfm (250 m ³ /h) suction requirement | 3780 2724 40 |

BRUSH FOR SUCTION CAP

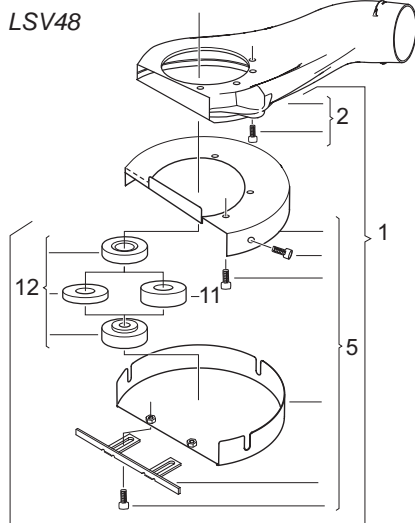
| | Ordering No. |
|---|--------------|
| Separate brush 3/4" high, for cap Ø 5" | 3780 2678 00 |
| Separate brush 3/4" high, for cap Ø 7" | 3780 2677 50 |
| Separate brush 1 3/16" high, for cap Ø 7" | 3780 2677 30 |

SPOT SUCTION KIT FOR DIE GRINDERS

Suction requirement: 125 m³/h (LSF19), 200 m³/h (LSF28)



| | | Ordering No. |
|-----------|---|--------------|
| LSV12 S-1 | KIT for sanding pad dia 2-3" | 3780 4092 64 |
| LSF19 S | KIT for burr | 3780 3015 22 |
| | Optional Diamond burr 6 mm | 3780 5013 70 |
| LSF19 S | KIT for drum | 3780 4011 61 |
| | Includes 3 Shaft dia 6 mm | 3780 5090 30 |
| | 4 Locking screw | 3780 5090 60 |
| | Optional 5 Diamond drum 27 mm | 3780 5033 00 |
| LSV19 S-1 | KIT for sanding pad dia 50 and 75 mm | 3780 4092 62 |
| | Includes 6 O-ring 23x1.6 | 0663 2103 85 |
| | 7 Clamp ring | 4112 1065 04 |
| | 9 Lock screw M4x6 A1 | 0192 1168 00 |
| | 10 Lock pin | 4112 0779 00 |
| LSF28 | KIT for burr | 3780 4007 42 |
| | Optional Diamond burr 6 mm | 3780 5013 70 |



DUST EXTRACTION FOR DIAMOND CUTTING BLADE (GRP-CUTTING)

| | | Ordering No. |
|------------------------|------------------------------------|--------------|
| LSV48 SA085/SA066 7 in | KIT | 3780 4093 42 |
| | Includes 12 Flange set | 3780 2799 50 |
| | Optional 7 in diamond cutting disc | 3780 5074 62 |

ROUTER

Pattern fixture cutting of composite in the aerospace industry as well as trimming of composite materials is preferably done with a router. The LSK37 is the only router with dust extraction and support bearing integrated into one unit. This gives the LSK37 excellent performance and ergonomics in most composite applications.

- **Productive** – The speed governor maintains the rotational speed at applied feed-force which enables fast and effective cutting and prevents the bit from clogging.
- **Ergonomic** – An integrated dust extraction hood for deportation of hazardous dust, thermally insulated throttle handle, sound dampening exhaust valve and piped-away exhaust air provides the operator with the best working environment.



LSK38



LSK37

| Model | Free speed r/min | Collet size | Weight lb | Power hp | Air consumption cfm | Recommended hose size | | Hose fitting thread NPT | Ordering No. |
|----------------|---------------------|----------------|--------------|-------------|---------------------------|--------------------------|-----|----------------------------------|--------------|
| | | | | | | mm | in | | |
| LSK37 S250-DS1 | 25000 | 6 mm | 6.1 | 0.95 | 32 | 13 | 1/2 | 3/8 | 8423 1234 41 |
| LSK37 S250-DS2 | 25000 | 1/4 | 6.1 | 0.95 | 32 | 13 | 1/2 | 3/8 | 8423 1234 42 |
| LSK38 S250 Do | 25000 | 1/4 | 2.2 | 1.8 | 58 | 13 | 1/2 | 3/8 | 8423 0700 00 |
| LSK38 S180 Do | 18000 | 1/4 | 2.2 | 1.8 | 58 | 13 | 1/2 | 3/8 | 8423 0700 01 |

Suction requirement: 200 m³/h. **NOTE:** LSK38 delivered without rotor housing

Cutting operations in glass and carbon fiber as well as metal sheet, wood and steel can successfully be performed with a circular cutter.

- **Effective** – LCS10 and LCS38 cut to a depth of 10 and 26 mm respectively.
- LCS38 is suitable for diamond coated blades only.
- **Dust extraction** – Cutting of composite materials generates dust containing particles hazardous to health. The dust must be deposited in order to prevent the operator from inhaling it.

LCS38 is equipped with a cutter blade guard with integrated dust extraction hood for external vacuum source.

LCS38



LCS10



| Model | Free speed r/min | Max output hp | Max cutting depth in | Max cutter blade dia in | Weight lb | Air consumption at free speed cfm | Rec. hose size | | Air inlet thread | Ordering No. |
|--------------------------|---------------------|------------------|----------------------------|----------------------------------|--------------|---|-------------------|-----|------------------------|--------------|
| | | | | | | | mm | in | | |
| LCS10 | 3000 | 0.4 | 3/8 | 2 | 3.1 | 16 | 6.3 | 1/4 | BSP 1/4 | 8424 1161 38 |
| LCS38 S150D ^a | 15000 | 1.7 | 1 | 4 | 3.7 | 58 | 13.0 | 1/2 | BSP 3/8 | 8424 1125 06 |

^a Suction requirement: 200 m³/h.

Accessories Included

Flanges for diamond blade
Hose nipple for 13 mm air hose

Optional Accessories

CUTTER BLADES

| Model | Application | Max thickness of material in | No. of teeth | Dia in | Hole in | Ordering No. |
|-------|------------------------------|------------------------------------|-----------------|-----------|------------|--------------|
| | | | | | | |
| | Steel sheet (std) | 3/64 | 62 | 2 | 3/8 | 4190 0395 00 |
| | Aluminum | 3/32 | 34 | 2 | 3/8 | 4190 0396 00 |
| | Wood | 3/8 | 34 | 2 | 3/8 | 4190 0396 00 |
| LCS38 | Diamond disc for fibre glass | 3/4 | 44/60 (Grain) | 3 | 1/2 | 3780 5073 00 |
| | Diamond disc for fibre glass | 1 | 44/60 (Grain) | 4 | 1/2 | 3780 5074 00 |

SUCTION HOSE SET

| Model | Ordering No. |
|---|--------------|
| Suction hose set, (L= 5.9 in, Dia 1 1/4") for LCS38 | 3780 2724 31 |

Productivity Kits

| Model | Max air flow | Hose 16.4 ft | Coupling | Lubrication | Ordering No. |
|--------------------------------|--------------|--------------|--------------|-------------|--------------|
| MIDI Optimizer F/RD EQ10US-T13 | 65 cfm | Turbo 13 | ErgoQIC 10US | Yes | 8202 0850 29 |
| MIDI Optimizer F/R EQ10US-T13 | 65 cfm | Turbo 13 | ErgoQIC 10US | No | 8202 0850 30 |

NOTE: Tool nipple is not included in the Productivity kit and needs to be order separately together with the tool.

PERCUSSIVE TOOLS

A worker wearing a blue safety helmet with a clear face shield, a red long-sleeved shirt, and dark leather apron and gloves is using a yellow and black percussive tool on a metal surface. The background shows a workshop environment with various tools and equipment.

Contents

| | |
|------------------------|-----|
| Introduction..... | 245 |
| Product safety..... | 246 |
| Chipping hammers | 247 |
| Scalers..... | 249 |
| Chisels..... | 251 |
| Riveting systems | 254 |
| Riveting hammers..... | 255 |
| Bucking bars..... | 257 |

These tools make light of the toughest jobs

Atlas Copco percussive tools are ideal for all material removal tasks in foundries, engineering workshops and shipyards. Built-in-ergonomic features such as vibration damping reduce the human load, delay fatigue and help protect the operator against the ill effects of long-term exposure to vibration and noise.

Our tools are made out of lightweight alloys to keep weight down while maintaining performance. This makes our tools extremely effective in the hands of your skilled operators.

WELD FLUX REMOVAL

Our tools are used when fettling welds from flux and spatter and in general scaling operations.

The conventional scaler RRC 13 and RRC 13B with a blowing function are the preferred models for these types of application. These tools have the right power and a sturdy reliable design. They also have a low vibration level for conventional models.

RUST AND PAINT REMOVAL

Rust and paint removal is a common application found in various types of industries such as shipbuilding, large transport sector and on offshore rigs.

Our RVM07B has low noise and is vibration damped. The standard chisel delivered with the tool is carbide tipped for a long service life. The tool is also equipped with a clean blowing device.

For lighter jobs the needle scaler RRC 13N is the ideal tool. Needle sets of different shapes and material are available to suit most operations.

CHIPPING AND SCALING

Percussive tools for chipping and scaling are widely used in all kinds of metalworking, construction and other industrial areas. Applications could be slag chipping, concrete trimming and sheet-metal cutting.

We offer high power-to-weight tools for these kind of applications. RRF 21/31 and RRD 37/57 models are vibration damped for operator comfort.

Our RRC22-RRC75 models are robust and highly dependable conventional chipping hammers suitable for heavy roughening.



Product Safety

IMPORTANT: All local safety regulations with respect to installation, operation and overhaul must always be followed.

AVOID ACCIDENTS

- 1** The chisel, die or punch may fall out or may be shot out of the tool accidentally causing serious injury.



To prevent injury from a flying chisel:

- Always use a retainer.
- Inspect the retainer for wear or damage regularly.



- Be aware that the chisel may break during operation.
- Never trigger a hammer unless held against a work piece.
- Remove chisel, die or punch from tool when work is over.
- When finishing a job, disconnect the tool from its air supply.
- Before changing accessories, chisel or die – disconnect the tool from the air supply.

- 2** Chips and sparks should be prevented from striking an eye or another worker.



To prevent vision loss:

- Always wear eye protection.
- Isolate work of this kind by using barriers between work stations.
- Do not use the tool for other purposes than it is intended for.

- 3** Gloves protect fingers from pinching, scuffing and scraping.

- Protective shoes may prevent your feet from being injured.

- 4** Explosive atmosphere must not be ignited.



To prevent injury and property loss from fires:

- Use other technique.
- Use accessories of non sparking material (e.g. needle attachment of Beryllium copper for a needle scaler).

- 5** Electric shock may be fatal.

- Avoid chiseling into electric wiring hidden inside walls etc.

LONG TERM RISKS

- 6** Always use ear protection.



To prevent gradual loss of hearing due to exposure to high noise level – wear ear protection.

- 7** Vibration may be harmful to hands and arms.



- Use vibration dampened tools if available.
- Reduce the total time of exposure to vibrations, particularly if the operator has to guide the chisel by hand.

- 8** Dust generated during operation may be harmful.

- Use spot suction or a breathing apparatus.

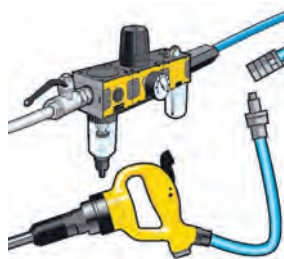
PROPER USE AND MAINTENANCE

- 9** Do not perform idle blows with a hammer.



- They will cause high internal stresses and shorten the life of the tool.
- Note the risk of shooting out the chisel, die or punch if the retainer is not in order or damaged.

- 10** Quick coupling.



- If a coupling is used on a percussive tool, it should be separated from the tool by a whip hose (length 0.5 m).

- 11** Follow the tool manual and the lubrication instructions.

- 12** Perform overhauls at regular intervals.

- **RRF21/31** have a sturdy D-handle in light metal alloy for a high power-to-weight ratio and steady grip. The compact, vibration-controlled design offers good accessibility and ease of use.
- **RRD37/57** are light, quiet and have a long service life. They have light alloy tool casings, very low vibration and noise levels, vibration damping in both hand grips, and piped away exhaust.



| Model | Blows Hz | Piston dia | | Stroke | | Energy per blow | | Weight | | Bushing | | Air consumption | | Hose size | | Air inlet NPT | Ordering No. |
|----------|----------|--------------------|---------|--------|-----|-----------------|-------|--------|-----|-------------------|------|-----------------|------|-----------|-----|----------------------|--------------|
| | | mm | in | mm | in | J | ft lb | kg | lb | mm | in | l/s | cfm | mm | in | | |
| RRF21-01 | 57 | 18 | 0.7 | 33 | 1.3 | 2.0 | 1.5 | 1.75 | 3.3 | 12.7 ^c | 0.50 | 6.5 | 13.8 | 10.0 | 3/8 | 3/8 | 8425 1104 05 |
| RRF31-01 | 38 | 22 | 0.9 | 43 | 1.7 | 4.4 | 3.2 | 2.5 | 5.3 | 12.7 ^c | 0.50 | 7.5 | 15.9 | 10.0 | 3/8 | 3/8 | 8425 1104 15 |
| RRF31-02 | 38 | 22 | 0.9 | 43 | 1.7 | 4.4 | 3.2 | 2.5 | 5.3 | 12.7 ^c | 0.50 | 7.5 | 15.9 | 10.0 | 3/8 | 3/8 | 8425 1104 16 |
| RRD37-11 | 35 | 27/19 ^a | 1.1/0.8 | 70 | 2.8 | 6.8 | 5.0 | 3.0 | 6.6 | 17.3 ^d | 0.68 | 7.2 | 15.3 | 12.5 | 1/2 | special ^e | 8425 1101 22 |
| RRD57-11 | 31 | 28/18 ^b | 1.1/0.8 | 92 | 3.6 | 9.3 | 6.9 | 3.4 | 7.5 | 17.3 ^d | 0.68 | 9.5 | 20.1 | 12.5 | 1/2 | special ^e | 8425 1103 20 |
| RRD57-12 | 31 | 28/18 ^b | 1.1/0.8 | 92 | 3.6 | 9.3 | 6.9 | 3.4 | 7.5 | 17.3 ^d | 0.68 | 9.5 | 20.1 | 12.5 | 1/2 | special ^e | 8425 1103 38 |

^a Effective piston dia 19 mm, 0.75 in.

^b Effective piston dia 21.5 mm, 0.85 in.

^c ISO.

^d Spline.

^e Integrated hose barb.

-01 and -11: Guided models,

-02 and -12: Non guided models.

Chipping Hammers

- **Dependable** – Their robust construction makes them highly dependable.
- **Efficient** – RRC65 and RRC75 have a blow rate which makes them particularly suitable for roughening.
- **Chisel retainer** – for safer jobs – RRC22-RRC75 are delivered with a chisel retainer as standard. For the same reason choose a tool that can be guided via the machine itself and not by holding the chisel.

Atlas Copco chipping hammers of series RRC are delivered with a standard, guided ISO hexagon nozzle (-01) or a round, non guided shank nozzle (-02).

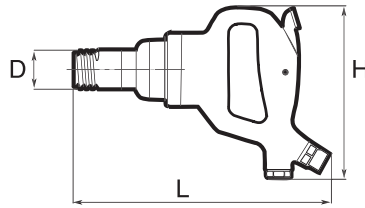


| Model | Blows Hz | Piston dia | | Stroke | | Energy per blow | | Weight | | Bushing | | Air consumption | | Hose size | | Air inlet NPT | Ordering No. |
|-----------|----------|------------|-----|--------|-----|-----------------|-------|--------|------|-------------------|------|-----------------|------|-----------|-----|----------------------|--------------|
| | | mm | in | mm | in | J | ft lb | kg | lb | mm | in | l/s | cfm | mm | in | | |
| RRC22F-01 | 62 | 15 | 0.6 | 52 | 2.0 | 2.7 | 2.0 | 2.2 | 4.9 | 12.7 ^a | 0.50 | 6.2 | 13.1 | 10 | 3/8 | 3/8 | 8425 0202 22 |
| RRC22F-02 | 62 | 15 | 0.6 | 52 | 2.0 | 2.7 | 2.0 | 2.2 | 4.9 | 12.7 ^a | 0.50 | 6.2 | 13.1 | 10 | 3/8 | 3/8 | 8425 0202 30 |
| RRC34B-01 | 45 | 24 | 0.9 | 67 | 2.6 | 5.5 | 4.1 | 4.5 | 9.9 | 17.3 ^a | 0.68 | 8.0 | 14.0 | 12.5 | 1/2 | special ^b | 8425 0212 53 |
| RRC65B-01 | 40 | 29 | 1.1 | 50 | 2.0 | 10.0 | 7.3 | 5.9 | 13.0 | 17.3 ^a | 0.68 | 10.8 | 22.9 | 12.5 | 1/2 | special ^b | 8425 0225 33 |
| RRC75B-01 | 30 | 29 | 1.1 | 75 | 3.0 | 16.0 | 11.8 | 6.5 | 14.3 | 17.3 ^a | 0.68 | 14.0 | 29.6 | 12.5 | 1/2 | special ^b | 8425 0225 58 |

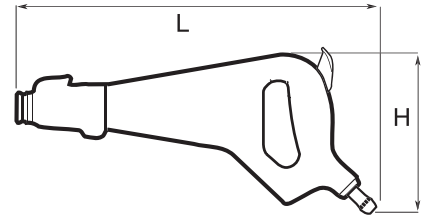
^a ISO. ^b Integrated hose barb.

Dimensions (in)

| Model | L | H | D |
|-------|------|-----|-----|
| RRF21 | 9.7 | 6.3 | 1.3 |
| RRF31 | 10.4 | 6.7 | 1.4 |
| RRD37 | 16.5 | 6.9 | — |
| RRD57 | 18.0 | 7.5 | — |

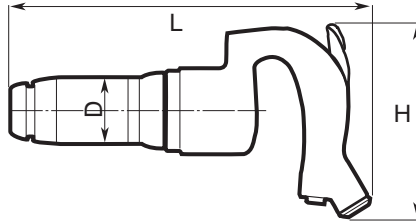


RRF21/31



RRD37/57

| Model | L | H | D |
|-------|------|-----|-----|
| RRC22 | 10.2 | 6.1 | 1.3 |
| RRC34 | 13.0 | 6.3 | 1.7 |
| RRC65 | 13.2 | 6.7 | 2.1 |
| RRC75 | 15.4 | 6.7 | 2.1 |



RRC

Accessories Included

RRF MODELS

Chisel retainer and a hose fitting

RRD MODELS

Flat chisel
Silencer complete
Hand grip
Key

RRC MODELS

Chisel retainer and hose fitting

Optional Accessories

| Model | Ordering No. |
|------------------------------|--------------|
| Power regulator | |
| RRF21 and -31 | 3512 0273 80 |
| Retainer, open type | |
| RRF21 | 3512 0290 90 |
| RRF31 | 3512 0305 90 |
| Protective handle kit | |
| RRF21 | 3512 0349 81 |
| RRF31 | 3512 0349 82 |

CHISELS

For a wide choice of chisels, see pages with "Chisels" at the end of this chapter.

Productivity Kits

| Model | Max air flow | Hose 16.4 ft | Coupling | Lubrication | Ordering No. |
|--------------------------------|--------------|--------------|--------------|-------------|--------------|
| MIDI Optimizer F/RD EQ10US-T13 | 65 cfm | Turbo 13 | ErgoQIC 10US | Yes | 8202 0850 29 |
| MIDI Optimizer F/R EQ10US-T13 | 65 cfm | Turbo 13 | ErgoQIC 10US | No | 8202 0850 30 |

NOTE: Tool nipple is not included in the Productivity kit and needs to be order separately together with the tool.

RVM07B is the obvious choice for task such as weld dressing light concrete trimming and for removal of paint and rust.

- **Vibration-damped with low-noise level.**
- **Two-job capacity** – RVM07B features a clean-blowing device which is very useful in order to keep the work piece clean from slag and other particles from the process.

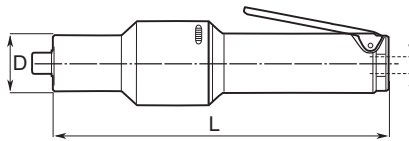


RVM07B

| Model | Blows Hz | Weight incl. standard chisel | | Air consumption | | Hose size | | Air inlet NPT | Ordering No. |
|--------|-------------|------------------------------------|-----|--------------------|-----|-----------|-----|---------------------|--------------|
| | | kg | lb | l/s | cfm | mm | in | | |
| RVM07B | 100 | 1.7 | 3.8 | 3.8 | 8.1 | 6.3 | 1/4 | 1/4 | 8425 0105 25 |

Dimensions

| Model | L in | D in |
|--------|---------|---------|
| RVM07B | 10.7 | 1.5 |



Scalers

Choose between two different models for heavy slag chipping and for instant trimming of concrete.

- **High removal rate** – RRC13 is very effective and has a high removal rate in relation to its low weight.
- **Well proven** percussive mechanism and retainer.
- **Two-job capacity** – RRC13B with extra clean-blowing device.
- **Improved back head** – Throttle valve and lever with really Heavy Duty performance for long service life. Clean blowing system with twice the previous blow



RRC13B

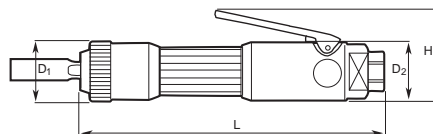
capacity. Big blow button for easy operation and sturdy valve stem to resist rough handling.

| Model | Blows Hz | Piston dia | | Stroke | | Energy per blow | | Weight | | Air consumption | | Hose size | | Air inlet BSP | Ordering No. |
|--------|-------------|------------|-----|--------|-----|--------------------|-------|--------|-----|--------------------|-----|-----------|-----|------------------|--------------|
| | | mm | in | mm | in | J | ft lb | kg | lb | l/s | cfm | mm | in | | |
| RRC13 | 73 | 15 | 0.6 | 35 | 1.4 | 1.4 | 1.0 | 1.4 | 3.1 | 4.0 | 8.0 | 10 | 3/8 | 3/8 | 8425 0101 30 |
| RRC13B | 73 | 15 | 0.6 | 35 | 1.4 | 1.4 | 1.0 | 1.6 | 3.5 | 4.0 | 8.0 | 10 | 3/8 | 3/8 | 8425 0101 33 |

B = Blow Gun

Dimensions

| Model | L in | H in | D ₁ in | D ₂ in |
|--------|---------|---------|----------------------|----------------------|
| RRC13 | 8.7 | 2.6 | 1.8 | 1.6 |
| RRC13B | 9.1 | 2.6 | 1.8 | 1.6 |



Needle Scaler

The effective needle scaler, type RRC13N, is based on the same fundamental design as the straight chipping hammers of type RRC13 described above.

- **Sturdy design** – Easy to maintain.
- **Versatile** – The needle scaler is used to remove welding slag, rust and paint from steel structures.

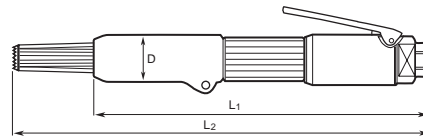


RRC13N

| Model | Blows Hz | Piston dia | | Stroke | | Energy per blow | | Weight | | Air consumption | | Hose size | | Air inlet NPT | Ordering No. |
|--------|-------------|------------|-----|--------|-----|--------------------|-------|--------|-----|--------------------|-----|-----------|-----|------------------|--------------|
| | | mm | in | mm | in | J | ft lb | kg | lb | l/s | cfm | mm | in | | |
| RRC13N | 73 | 15 | 0.6 | 35 | 1.4 | 1.4 | 1.0 | 1.9 | 4.2 | 4.0 | 8.0 | 10 | 3/8 | 3/8 | 8425 0101 36 |

Dimensions

| Model | L ₁ in | L ₂ in | D in |
|--------|----------------------|----------------------|---------|
| RRC13N | 11.1 | 13.9 | 1.5 |



Accessories Included

FOR ALL RRC13

Hose fitting
Scaling chisel

FOR RMV07B

Hose fitting
Flat carbide tipped chisel 10x120 mm

Optional Accessories

FOR RRC13, 13B

| RRC13 / RRC13B | Ordering No. |
|----------------|--------------|
| Hand guard | 3510 0246 90 |
| Silencer | 3510 0366 80 |

Chisels for RRC13 and -13B:
Square shank 13.0 mm

FOR RRC13N

NEEDLE-SET OF 19 NEEDLES, LENGTH 100 MM

| Material | Ordering No. |
|---|--------------|
| Steel, standard | 3510 0221 90 |
| Steel flat ends | 3510 0227 90 |
| Stainless steel flat ends | 3510 0228 90 |
| Beryllium copper flat ends (spark resistant) | 3510 0229 90 |

FOR RMV07B

Carbide tipped chisels and through hardened chisels with other length and width, see separate page for chisels.

Productivity Kits

| Model | Max air flow | Hose 16.4 ft | Coupling | Lubrication | Ordering No. |
|--------------------------------|--------------|--------------|--------------|-------------|--------------|
| MIDI Optimizer F/RD EQ10US-T13 | 65 cfm | Turbo 13 | ErgoQIC 10US | Yes | 8202 0850 29 |
| MIDI Optimizer F/R EQ10US-T13 | 65 cfm | Turbo 13 | ErgoQIC 10US | No | 8202 0850 30 |

NOTE: Tool nipple is not included in the Productivity kit and needs to be order separately together with the tool.

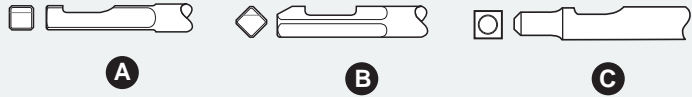


Chisels for Chipping hammers. All chisels are normally through hardened. Otherwise, see tables.

| Figure | Shank type | Tools | Table |
|--------|---|--------------------------------------|-------|
| | Square shank 13.0 mm | RRC13, RRC13B | 1 |
| | Extended square shank ISO, 12.7 mm | | 1 |
| | Hexagon and round shank ISO, round collar 12.7 mm | RRC22F-01, RRC22F-02 RRF21, RRF31 | 2 |
| | Hexagon shank ISO round collar 17.3 mm | RRC34B-01, RRC65B-01, RRC75B-01 | 3 |
| | Round shank ISO, with splines 17.3 mm | RRD37, RRD57 | 3 |
| | Hexagon shank ISO without round collar 17.3 mm | RRC34-01, RRC65-01, RRC75-01 | 4 |
| | Round shank ISO, without collar 17.3 mm | RRC34-02, RRC65-02, RRC75-02 | 4 |
| | Special shank | RVM07B | 5 |

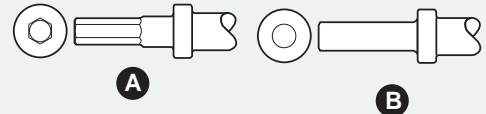
Chisels

- 1 A. Chisels with square shank 1/2"
 B. Chisels with square shank ISO 1/2"
 C. Square shank 1/2" in round end. For RRC13B



| Chisel type | Designation | Width | | Length | | Square 1/2" Ordering No. | ISO Extended square 1/2" Ordering No. | Ordering No. |
|-------------|----------------------|-------|------|--------|------|--------------------------|---------------------------------------|--------------|
| | | mm | in | mm | in | | | |
| | Chisel blank | 15 | 0.59 | 155 | 6.1 | 3085 0020 00 | | |
| | | 15 | 0.59 | 200 | 7.9 | 3085 0020 01 | | |
| | | 15 | 0.59 | 300 | 11.8 | 3085 0020 02 | | |
| | Flat chisel | 15 | 0.59 | 165 | 6.1 | 3085 0227 00 | 3085 0230 01 | |
| | | 15 | 0.59 | 200 | 7.9 | 3085 0227 01 | | |
| | | 15 | 0.59 | 110 | 4.3 | | | 3512 0114 00 |
| | | 15 | 0.59 | 185 | 7.3 | | | 3512 0070 00 |
| | Wide flat chisel | 35 | 1.38 | 165 | 6.5 | 3085 0032 00 | 3085 0232 01 | |
| | | 35 | 1.38 | 200 | 7.9 | 3085 0032 01 | | |
| | | 35 | 1.38 | 300 | 11.8 | 3085 0032 02 | | |
| | | 55 | 2.17 | 165 | 6.5 | 3085 0332 00 | | |
| | | 35 | 1.4 | 178 | 7 | | | 3512 0115 00 |
| | Angle scraper chisel | 35 | 1.38 | 165 | 6.5 | 3085 0176 00 | 3085 0362 00 | |
| | | 35 | 1.38 | 200 | 7.9 | 3085 0176 01 | | |
| | | 55 | 2.17 | 165 | 6.5 | 3085 0333 00 | | |
| | Scaling chisel | 15 | 0.59 | 155 | 6.1 | 3085 0018 00 | 3085 0229 01 | |
| | | 15 | 0.59 | 200 | 7.9 | 3085 0018 02 | | |
| | | 15 | 0.59 | 300 | 11.8 | 3085 0018 01 | | |

- 2 A. Chisels with hexagon shank ISO, round collar 1/2 in.
 For RRC22F-01.
 B. Chisels with round shank ISO, round collar 1/2 in.
 For RRC22F-02.



| Chisel type | Designation | Width | | Length | | Hex ISO 12.7 mm (1/2") Ordering No. | Round ISO 12.7 mm (1/2") Ordering No. |
|-------------|----------------------|-------|------|--------|------|-------------------------------------|---------------------------------------|
| | | mm | in | mm | in | | |
| | Chisel blank | 13 | 0.51 | 200 | 7.9 | 3085 0182 00 | |
| | | 13 | 0.51 | 350 | 13.8 | 3085 0182 01 | |
| | | 13 | 0.51 | 400 | 15.7 | 3085 0182 04 | |
| | | 13 | 0.51 | 500 | 19.7 | 3085 0182 05 | |
| | Flat chisel | 13 | 0.51 | 200 | 7.9 | 3085 0183 00 | 3085 0184 00 |
| | | 35 | 1.38 | 300 | 11.8 | 3085 0376 00 | |
| | Sharp chisel | 15 | 0.59 | 200 | 7.9 | 3085 0170 00 | |
| | | 15 | 0.59 | 300 | 11.8 | 3085 0170 01 | |
| | Spot weld chisel | 17 | 0.69 | 200 | 7.9 | 3085 0301 00 | |
| | Angle scraper chisel | 30 | 1.18 | 200 | 7.9 | 3085 0262 00 | |
| | Pipe cutting chisel | 20 | 0.78 | 200 | 7.9 | 3085 0302 00 | |
| | | 35 | 1.38 | 200 | 7.9 | 3085 0303 00 | |
| | Plate cutting chisel | 14.5 | 0.57 | 200 | 7.9 | 3085 0263 00 | |
| | Plate cutting chisel | 16 | 0.62 | 200 | 7.9 | 3085 0173 00 | |
| | Moil point chisel | 13 | 0.51 | 200 | 7.9 | 3085 0297 00 | |
| | | 13 | 0.51 | 305 | 12.0 | 3085 0297 01 | |

3 Chisels with round ISO shank with splines 0.68 in. For RRD 37-11, RRD 37-12, RRD 57-11, RRD 57-12.



| Chisel type | Designation | Width | | Length | | Round ISO with splines 17.3 mm (0.68") Ordering No. |
|-------------|------------------------|-------|------|--------|------|---|
| | | mm | in | mm | in | |
| | Chisel blank | 22 | 0.86 | 250 | 9.8 | 3085 0242 00 |
| | | 22 | 0.86 | 340 | 13.4 | 3085 0242 01 |
| | | 22 | 0.86 | 550 | 21.7 | 3085 0242 02 |
| | | 22 | 0.86 | 800 | 31.5 | 3085 0242 03 |
| | Flat chisel | 22 | 0.86 | 215 | 8.5 | 3085 0236 00 |
| | | 22 | 0.86 | 250 | 9.8 | 3085 0236 01 |
| | | 22 | 0.86 | 340 | 13.4 | 3085 0236 02 |
| | | 22 | 0.86 | 550 | 21.7 | 3085 0236 03 |
| | Flat chisel | 32 | 1.26 | 340 | 13.4 | 3085 0252 00 |
| | | | | | | |
| | | | | | | |
| | Wide flat chisel | 50 | 1.97 | 340 | 13.4 | 3085 0250 00 |
| | Extra wide flat chisel | 130 | 5.12 | 400 | 15.7 | 3085 0998 00 |
| | Angle scraper chisel | 50 | 1.97 | 335 | 13.2 | 3085 0350 00 |
| | | | | | | |
| | Moil point chisel | 22 | 0.86 | 340 | 13.4 | 3085 0249 00 |

4 Chisels with special shank. For RVM07.



| Chisel type | Designation | Material | Width | | Length | | Ordering No. |
|-------------|-------------|------------------------|-------|------|--------|------|--------------|
| | | | mm | in | mm | in | |
| | Flat chisel | Tungsten carbide | 10 | 0.39 | 120 | 4.7 | 3085 0321 00 |
| | | Through hardened steel | 10 | 0.39 | 120 | 4.7 | 3085 0325 00 |
| | | Tungsten carbide | 10 | 0.39 | 200 | 7.9 | 3085 0321 01 |
| | | Tungsten carbide | 10 | 0.39 | 300 | 11.8 | 3085 0321 02 |
| | | Tungsten carbide | 20 | 0.79 | 120 | 4.7 | 3085 0345 00 |
| | | Through hardened steel | 20 | 0.79 | 120 | 4.9 | 3085 0346 00 |
| | Wide chisel | Tungsten carbide | 35 | 1.38 | 120 | 4.7 | 3085 0322 00 |
| | | Through hardened steel | 35 | 1.38 | 120 | 4.7 | 3085 0327 00 |

Minimum vibration, maximum productivity

Atlas Copco's top-of-the-line riveting systems are designed to minimize the riveter's exposure to vibration, while maintaining high tool performance. The RRH recoilless riveting hammer has an air cushion behind the hammer piston which efficiently kills vibrations. The same air dampening technique is used in RBB bucking bars. It raises individual productivity and boosts output in your plant.

The Atlas Copco riveting system includes vibration-damped hammers RRH and bucking bars RBB – as well as conventional riveting hammers RRN.

The vibration-damped riveting hammers – RRH – are available in different sizes.

Each size is available in “Trigger start” and “Push to start” models.

The conventional riveting hammer – RRN – is available in one size: RRN11P.

CRITICAL FACTORS

The number of blows and the power are critical factors which determine the strength of a riveted joint. A few powerful blows are needed to fill out the hole and form a head when upsetting the rivet. The impact force is critical to some extent when working with aluminum alloys, as too many blows can embrittle the metal.

In terms of capacity, the tools overlap. The selection guide below helps you to find the right tool for your particular application of riveting.

The vibration-damped bucking bars RBB are available in two versions – the simple spring damped – SP type and the air servo assisted SA type.



Selection Guide

| Hammer model ^a | Nominal Max. Rivet Diameter Capacity | | | | | | | Bucking bar model required ^b |
|---------------------------|--------------------------------------|-------------|-------|-------------|----------|-------------|--|---|
| | Dural | | Steel | | Titanium | | | |
| | mm | in | mm | in | mm | in | | |
| RRN11 | 2-5 | 3/32 - 3/16 | 1-4 | 3/32 - 5/32 | | | | |
| RRH04 | 2-5 | 3/32 - 3/16 | 1-4 | 3/21 - 5/32 | | | | RBB04 |
| RRH06 | 4-7 | 5/32 - 1/4 | 3-6 | 1/8 - 1/4 | 2-4 | 3/32 - 5/32 | | |
| RRH08 | 5-8 | 3/16 - 5/16 | 4-7 | 5/32 - 1/4 | 3-6 | 1/8 - 1/4 | | |
| RRH10 | 5-9 | 3/16 - 3/8 | 6-8 | 1/4 - 5/16 | 4-7 | 5/32 - 1/4 | | |
| RRH12 | 8-11 | 5/16 - 7/16 | 7-10 | 1/4 - 3/8 | 6-9 | 1/4 - 1/8 | | |
| RRH14 | 11-13 | 7/16 - 1/2 | 9-12 | 3/8 - 15/32 | 8-11 | 5/16 - 7/16 | | |

^a Hammer capacity depends on direct/indirect riveting as well as Panel density and stiffness.

^b Bucking bar capacity is dependent on dolly weight.

Vibration-damped

Riveting Hammers

RRH is a unique series of riveting hammers incorporating completely revolutionary ergonomic advantages.

- **Versatile** – RRH can easily cope with rivets in diameters up to 13 mm.
- **Vibration-damped system** – The RRH vibration-damped riveting hammer, combined with the RBB vibration-damped bucking bar, offer an unbeatable system for riveting.
- **Adjustable power.**
- **Adjustable hand guard** – Support hand grip is vibration-damped.
- Models with trigger start for excellent handling. Pistol grip with rubber coating.



| Model | Blows Hz | Nozzle | | Piston dia | | Stroke | | Energy per blow | | Weight | | Air consumption | | Hose size | | Air inlet NPT | Ordering No. |
|---------------------------|-------------|--------|-----|------------|-----|--------|-----|--------------------|-------|--------|-----|--------------------|-----|-----------|-----|------------------|--------------|
| | | mm | in | mm | in | mm | in | J | ft lb | kg | lb | l/s | cfm | mm | in | | |
| With push start | | | | | | | | | | | | | | | | | |
| RRH04P-01 | 66 | 10.0 | 0.4 | 15 | 0.6 | 40 | 1.6 | 2.0 | 1.5 | 1.0 | 2.2 | 3.7 | 6 | 6.3 | 1/4 | 1/4 | 8426 1111 07 |
| RRH04P-02 | 66 | 10.2 | 0.4 | 15 | 0.6 | 40 | 1.6 | 2.0 | 1.5 | 1.0 | 2.2 | 3.7 | 6 | 6.3 | 1/4 | 1/4 | 8426 1111 15 |
| RRH04P-12 | 66 | 10.2 | 0.4 | 15 | 0.6 | 40 | 1.6 | 2.0 | 1.5 | 1.0 | 2.2 | 3.7 | 6 | 6.3 | 1/4 | 1/4 | 8426 1111 25 |
| RRH06P | 36 | 10.2 | 0.4 | 15 | 0.6 | 102 | 4.0 | 6.0 | 4.4 | 1.3 | 2.9 | 9.0 | 19 | 10.0 | 3/8 | 1/4 | 8426 1111 04 |
| RRH08P | 24 | 10.2 | 0.4 | 15 | 0.6 | 137 | 5.4 | 8.0 | 5.9 | 1.4 | 3.0 | 10.0 | 21 | 10.0 | 3/8 | 1/4 | 8426 1111 09 |
| RRH10P | 25 | 12.7 | 0.5 | 19 | 0.7 | 118 | 4.6 | 13.0 | 9.6 | 2.0 | 4.4 | 12.0 | 24 | 10.0 | 3/8 | 1/4 | 8426 1110 20 |
| RRH12P | 20 | 12.7 | 0.5 | 19 | 0.7 | 153 | 6.0 | 16.0 | 11.8 | 2.1 | 4.6 | 13.0 | 28 | 10.0 | 3/8 | 1/4 | 8426 1110 47 |
| RRH14P | 18 | 12.7 | 0.5 | 19 | 0.7 | 188 | 7.4 | 19.5 | 14.4 | 2.2 | 4.8 | 13.0 | 28 | 10.0 | 3/8 | 1/4 | 8426 1110 80 |
| With trigger start | | | | | | | | | | | | | | | | | |
| RRH04P TS-12 | 66 | 10.2 | 0.4 | 15 | 0.6 | 40 | 1.6 | 2.0 | 1.5 | 1.0 | 2.2 | 3.7 | 6 | 6.3 | 1/4 | 1/4 | 8426 1111 27 |
| RRH06P TS | 36 | 10.2 | 0.4 | 15 | 0.6 | 102 | 4.0 | 6.0 | 4.4 | 1.3 | 2.9 | 9.0 | 19 | 10.0 | 3/8 | 1/4 | 8426 1111 66 |
| RRH08P TS | 24 | 10.2 | 0.4 | 15 | 0.6 | 137 | 5.4 | 8.0 | 5.9 | 1.4 | 3.0 | 10.0 | 21 | 10.0 | 3/8 | 1/4 | 8426 1111 68 |
| RRH10P TS | 25 | 12.7 | 0.5 | 19 | 0.7 | 118 | 4.6 | 13.0 | 9.6 | 2.0 | 4.4 | 12.0 | 24 | 10.0 | 3/8 | 1/4 | 8426 1110 70 |
| RRH12P TS | 20 | 12.7 | 0.5 | 19 | 0.7 | 153 | 6.0 | 16.0 | 11.8 | 2.1 | 4.6 | 13.0 | 28 | 10.0 | 3/8 | 1/4 | 8426 1110 72 |
| RRH14P TS | 18 | 12.7 | 0.5 | 19 | 0.7 | 188 | 7.4 | 19.5 | 14.4 | 2.2 | 4.8 | 13.0 | 28 | 10.0 | 3/8 | 1/4 | 8426 1110 81 |
| RRH12P-ENG | 20 | 12.7 | 0.5 | 19 | 0.7 | 153 | 6.0 | 16.0 | 11.8 | 2.1 | 4.6 | 13.0 | 28 | 10.0 | 3/8 | 1/4 | 8426 1110 49 |
| RRH14P-ENG | 18 | 12.7 | 0.5 | 19 | 0.7 | 188 | 7.4 | 19.5 | 14.4 | 2.2 | 4.8 | 13.0 | 28 | 10.0 | 3/8 | 1/4 | 8426 1110 82 |

-01 means 10 mm short shank rivet set.

-02 means 10.2 mm short shank rivet set.

-12 means 10.2 mm stand shank rivet set.

Conventional Type

Riveting Hammers

For riveting in confined spaces we recommend our RRN11 riveting hammer.

- **RRN11** – is the smallest riveting hammer available on the market, with unique accessibility.
- **Adjustable** – The RRN11 has a built-in adjustment knob with which you can set the power for different rivet materials and sizes.
- **Controllable** – The trigger is easily operated and provides excellent control.



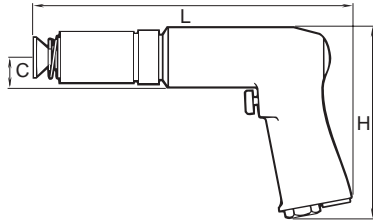
| Model | Blows Hz | Nozzle | | Piston dia | | Stroke | | Energy per blow | | Weight | | Air consumption | | Hose size | | Air inlet NPT | Ordering No. |
|-----------|-------------|--------|-----|------------|-----|--------|-----|--------------------|-------|--------|-----|--------------------|-----|-----------|-----|------------------|--------------|
| | | mm | in | mm | in | mm | in | J | ft lb | kg | lb | l/s | cfm | mm | in | | |
| RRN11P-01 | 66 | 10.0 | 0.4 | 15 | 0.6 | 40 | 1.6 | 2.0 | 1.5 | 1.2 | 2.6 | 3.4 | 7.2 | 6.3 | 1/4 | 1/8 | 8426 1101 05 |
| RRN11P-02 | 66 | 10.2 | 0.4 | 15 | 0.6 | 40 | 1.6 | 2.0 | 1.5 | 1.2 | 2.6 | 3.4 | 7.2 | 6.3 | 1/4 | 1/8 | 8426 1101 13 |

-01 means 10 mm short shank rivet set.

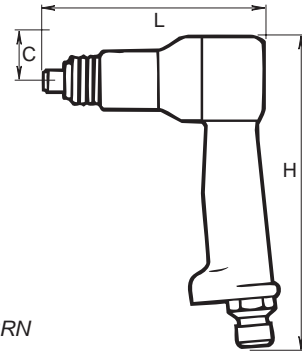
-02 means 10.2 mm short shank rivet set.

Dimensions (in)

| Model | L in | H in | C in |
|------------|---------|---------|---------|
| RRH | | | |
| RRH04-01 | 6.3 | 5.8 | 0.9 |
| RRH04-02 | 6.3 | 5.8 | 0.9 |
| RRH04-12 | 6.9 | 5.8 | 0.9 |
| RRH06 | 8.9 | 5.8 | 0.94 |
| RRH08P | 9.6 | 5.8 | 0.94 |
| RRH10P | 10.4 | 5.9 | 1.06 |
| RRH12P | 11.8 | 5.9 | 1.06 |
| RRH14P | 13.1 | 5.9 | 1.06 |
| RRN | | | |
| RRN11P | 3.9 | 6.7 | 0.9 |



RRH



RRN

Accessories Included

For RRH models

- Hose fitting
- Flush set
- Open spring retainer

For RRN11P

- Hose fitting and retainer
- Blank rivet set
- Retainers for blank and flush rivet set

Optional Accessories

RIVET SETS. RRH AND RRN

| Hammer type | Model | Shank mm | Flush set | Ordering No. | Blank rivet set | Ordering No. |
|-------------------------------|-------|-------------|-----------|--------------|-----------------|-------------------------------|
| RRH04P-01 RRN11P-01 | (-01) | 10.0 spec | | 3085 0347 00 | | 3006 0983 00 |
| RRH04P-02 RRN11P-02 | (-02) | 10.2 spec | | 3085 0352 00 | | 3085 0353 00 |
| RRH04P-12 RRH06P RRH08P | (-12) | 10.2 std | | 3085 0324 00 | | 3085 0022 00 |
| RRH10P RRH12P RRH14P | | 12.7 std | | 3085 0323 00 | | 3085 0021 00 |
| RRH04P-12 RRH06P RRH08P | | 10.2 std | | | | 3085 0212 00 Mandrel blank |
| RRH04P-12 RRH06P RRH08P | | 10.2 std | | | | 3085 0212 02 |

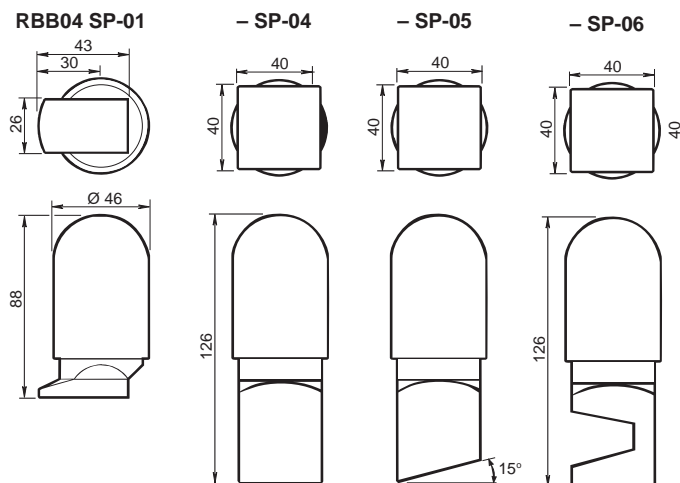
An efficient riveting system consists of vibration-damped bucking bars together with vibration-damped riveting hammers.

- **Cramped spaces** – Mini bucking bars RBB04SP are ideal for work in confined spaces. The large mass types -04, -05 will in most applications set the rivet faster than the smaller models.



| Model | Weight | | Diameter | | Ordering No. |
|--------------------------|--------|-----|----------|-----|--------------|
| | kg | lb | mm | in | |
| Mini bucking bars | | | | | |
| RBB04SP-01 | 0.8 | 1.8 | 46 | 1.8 | 8426 9101 10 |
| RBB04SP-04 | 1.3 | 2.9 | 46 | 1.8 | 8426 9101 13 |
| RBB04SP-05 | 1.4 | 3.1 | 46 | 1.8 | 8426 9101 14 |
| RBB04SP-06 | 1.1 | 2.5 | 46 | 1.8 | 8426 9101 15 |

Dimensions (mm)



DRILLS



Contents

| | |
|---------------------------|-----|
| Introduction..... | 259 |
| Pistol grip drills | 261 |
| Straight drills..... | 265 |
| Angle drills..... | 267 |
| Modular drills | 271 |
| Micro stop drills..... | 274 |
| Tappers..... | 276 |
| Screw-feed drills..... | 278 |
| Positive feed drills..... | 279 |

Reliable, productive and comfortable to work with



The handheld drills in Atlas Copco's wide range are of the highest quality and built to provide consistent reliability and performance in a wide range of applications. Their advanced ergonomic designs make your job easier, safer and more efficient.

From the time our first drill was produced in 1901, Atlas Copco has demonstrated a genuine understanding of customer needs. Our drills have evolved to meet changing customer demands over the years. Whatever the job, Atlas Copco has a drill to match your exact requirements.

RELIABLE

When you pick up an Atlas Copco drill, you can be confident that it will do the job over and over again.

POWERFULLY PRODUCTIVE

Despite their compact designs, our drills consistently deliver all the power you need. Their high power-to-weight ratio ensures maximum material removal in the shortest possible time.

ERGONOMIC

Thanks to 50 years of focusing on ergonomics, Atlas Copco drills fit comfortably in your hand. Grips are anatomically shaped to keep your arm and wrist straight, reducing the risk of injury during

long-term use. The light weight and perfect balance of each drill enables you to guide it smoothly and easily. Low noise and vibration levels make the tools comfortable to work with all day long.

DURABLE, LOW MAINTENANCE

The rugged, lubrication-free designs of our drills can withstand the toughest industrial situations and go on working day in, day out. Maintenance requirements are low.

QUALITY THROUGHOUT THE TOOLS' LIFE-CYCLE

Atlas Copco stands for quality, from the manufacture of critical drill components, through production and sales, to service and support throughout the tools' long life-cycle.

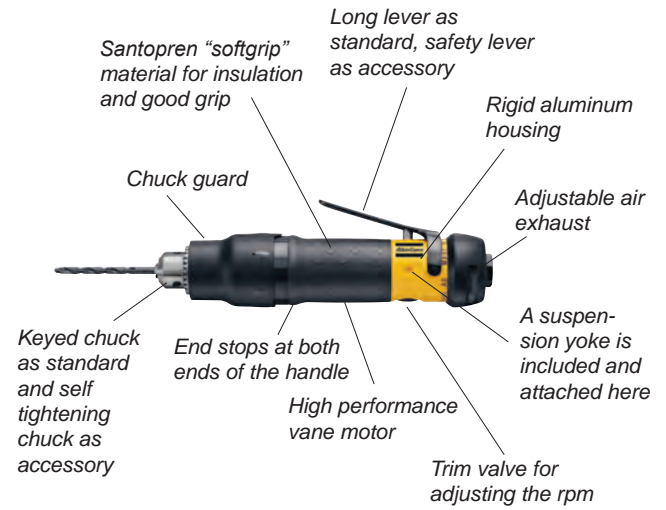


Drills

LBB 16 FEATURES



LBB 16S FEATURES



Selection Guide

| Cutting speed ^a sfpm | Material | | rpm | | | | | | | | | | | | | | | | | | | | | | | | | | | | |
|------------------------------------|----------------|---------------------|------|------|------|------|------|------|------|------|------|------|------|------|------|------|------|------|------|------|------|------|------|------|------|------|------|-------|-------|-------|------|
| | | | 300 | 400 | 500 | 600 | 700 | 800 | 1000 | 1200 | 1300 | 1500 | 1700 | 1900 | 2200 | 2400 | 2600 | 2900 | 3000 | 3300 | 3700 | 3800 | 4500 | 5500 | 6000 | 6400 | 6500 | 20000 | 23000 | 26000 | |
| 15 | Titanium | Alloy Steel | 3/16 | 5/32 | 1/8 | 1/8 | 1/16 | 1/16 | 1/32 | 1/32 | 1/32 | 1/32 | 1/32 | 1/32 | 1/32 | 1/32 | 1/32 | 1/32 | 1/32 | 1/32 | 1/32 | 1/32 | 1/32 | 1/32 | 1/32 | 1/32 | 1/32 | 1/32 | 1/32 | 1/32 | 1/32 |
| 30 | | | 7/16 | 5/16 | 1/4 | 3/16 | 3/16 | 5/32 | 1/8 | 1/8 | 1/16 | 1/16 | 1/16 | 1/16 | 1/16 | 1/32 | 1/32 | 1/32 | 1/32 | 1/32 | 1/32 | 1/32 | 1/32 | 1/32 | 1/32 | 1/32 | 1/32 | 1/32 | 1/32 | 1/32 | 1/32 |
| 50 | Cast iron | Mild steel | 1/2 | 3/8 | 5/16 | 1/4 | 1/4 | 3/16 | 5/32 | 5/32 | 1/8 | 1/8 | 1/8 | 1/16 | 1/16 | 1/16 | 1/16 | 1/16 | 1/16 | 1/16 | 1/32 | 1/32 | 1/32 | 1/32 | 1/32 | 1/32 | 1/32 | 1/32 | 1/32 | 1/32 | |
| 80 | | | 5/8 | 1/2 | 7/16 | 3/8 | 5/16 | 1/4 | 3/16 | 3/16 | 5/32 | 5/32 | 1/8 | 1/8 | 1/8 | 1/16 | 1/16 | 1/16 | 1/16 | 1/16 | 1/16 | 1/16 | 1/16 | 1/16 | 1/16 | 1/16 | 1/16 | 1/16 | 1/16 | 1/16 | |
| 100 | Hard plastics | | 3/8 | 5/16 | 1/4 | 1/4 | 1/4 | 1/4 | 3/16 | 5/32 | 5/32 | 5/32 | 1/8 | 1/8 | 1/8 | 1/8 | 1/8 | 1/8 | 1/8 | 1/8 | 1/8 | 1/8 | 1/16 | 1/16 | 1/16 | 1/16 | 1/32 | 1/32 | 1/32 | 1/32 | |
| 115 | | | 3/8 | 3/8 | 1/4 | 1/4 | 1/4 | 1/4 | 3/16 | 3/16 | 5/32 | 5/32 | 5/32 | 1/8 | 1/8 | 1/8 | 1/8 | 1/8 | 1/8 | 1/8 | 1/8 | 1/8 | 1/16 | 1/16 | 1/16 | 1/16 | 1/16 | 1/16 | 1/16 | 1/32 | |
| 130 | | | 3/8 | 5/16 | 1/4 | 1/4 | 1/4 | 1/4 | 3/16 | 3/16 | 5/32 | 5/32 | 5/32 | 1/8 | 1/8 | 1/8 | 1/8 | 1/8 | 1/8 | 1/8 | 1/8 | 1/16 | 1/16 | 1/16 | 1/16 | 1/16 | 1/16 | 1/16 | 1/32 | 1/32 | |
| 150 | | | 3/8 | 5/16 | 1/4 | 1/4 | 1/4 | 1/4 | 3/16 | 3/16 | 5/32 | 5/32 | 5/32 | 1/8 | 1/8 | 1/8 | 1/8 | 1/8 | 1/8 | 1/8 | 1/8 | 1/8 | 1/16 | 1/16 | 1/16 | 1/16 | 1/16 | 1/16 | 1/16 | 1/32 | 1/32 |
| 165 | | | 3/8 | 5/16 | 1/4 | 1/4 | 1/4 | 1/4 | 3/16 | 3/16 | 5/32 | 5/32 | 5/32 | 1/8 | 1/8 | 1/8 | 1/8 | 1/8 | 1/8 | 1/8 | 1/8 | 1/16 | 1/16 | 1/16 | 1/16 | 1/16 | 1/16 | 1/16 | 1/32 | 1/32 | |
| 180 | | | 3/8 | 3/8 | 5/16 | 1/4 | 1/4 | 1/4 | 1/4 | 3/16 | 3/16 | 5/32 | 5/32 | 5/32 | 1/8 | 1/8 | 1/8 | 1/8 | 1/8 | 1/8 | 1/8 | 1/8 | 1/16 | 1/16 | 1/16 | 1/16 | 1/16 | 1/16 | 1/16 | 1/32 | 1/32 |
| 200 | Composite | Aluminum and bronze | 7/16 | 3/8 | 3/8 | 1/4 | 1/4 | 1/4 | 1/4 | 3/16 | 3/16 | 5/32 | 5/32 | 5/32 | 1/8 | 1/8 | 1/8 | 1/8 | 1/8 | 1/8 | 1/8 | 1/16 | 1/16 | 1/16 | 1/16 | 1/16 | 1/16 | 1/16 | 1/32 | 1/32 | |
| 215 | | | 1/2 | 3/8 | 3/8 | 1/4 | 1/4 | 1/4 | 1/4 | 3/16 | 3/16 | 5/32 | 5/32 | 5/32 | 1/8 | 1/8 | 1/8 | 1/8 | 1/8 | 1/8 | 1/8 | 1/8 | 1/16 | 1/16 | 1/16 | 1/16 | 1/16 | 1/16 | 1/16 | 1/32 | 1/32 |
| 230 | | | 1/2 | 3/8 | 3/8 | 1/4 | 1/4 | 1/4 | 1/4 | 3/16 | 3/16 | 5/32 | 5/32 | 5/32 | 1/8 | 1/8 | 1/8 | 1/8 | 1/8 | 1/8 | 1/8 | 1/16 | 1/16 | 1/16 | 1/16 | 1/16 | 1/16 | 1/16 | 1/32 | 1/32 | |
| 245 | | | 9/16 | 3/8 | 3/8 | 1/4 | 1/4 | 1/4 | 1/4 | 3/16 | 3/16 | 5/32 | 5/32 | 5/32 | 1/8 | 1/8 | 1/8 | 1/8 | 1/8 | 1/8 | 1/8 | 1/8 | 1/16 | 1/16 | 1/16 | 1/16 | 1/16 | 1/16 | 1/16 | 1/32 | 1/32 |
| 260 | Wood and board | | 9/16 | 3/8 | 3/8 | 1/4 | 1/4 | 1/4 | 1/4 | 3/16 | 3/16 | 5/32 | 5/32 | 5/32 | 1/8 | 1/8 | 1/8 | 1/8 | 1/8 | 1/8 | 1/8 | 1/16 | 1/16 | 1/16 | 1/16 | 1/16 | 1/16 | 1/16 | 1/32 | 1/32 | |
| 280 | | | 5/8 | 3/8 | 3/8 | 1/4 | 1/4 | 1/4 | 1/4 | 3/16 | 3/16 | 5/32 | 5/32 | 5/32 | 1/8 | 1/8 | 1/8 | 1/8 | 1/8 | 1/8 | 1/8 | 1/8 | 1/16 | 1/16 | 1/16 | 1/16 | 1/16 | 1/16 | 1/16 | 1/32 | 1/32 |
| 295 | | | 5/16 | 1/4 | 1/4 | 1/4 | 1/4 | 1/4 | 3/16 | 3/16 | 5/32 | 5/32 | 5/32 | 1/8 | 1/8 | 1/8 | 1/8 | 1/8 | 1/8 | 1/8 | 1/8 | 1/16 | 1/16 | 1/16 | 1/16 | 1/16 | 1/16 | 1/16 | 1/32 | 1/32 | |
| 310 | | | 5/16 | 1/4 | 1/4 | 1/4 | 1/4 | 1/4 | 3/16 | 3/16 | 5/32 | 5/32 | 5/32 | 1/8 | 1/8 | 1/8 | 1/8 | 1/8 | 1/8 | 1/8 | 1/8 | 1/16 | 1/16 | 1/16 | 1/16 | 1/16 | 1/16 | 1/16 | 1/16 | 1/32 | 1/32 |
| 330 | | | 3/8 | 1/4 | 1/4 | 1/4 | 1/4 | 1/4 | 3/16 | 3/16 | 5/32 | 5/32 | 5/32 | 1/8 | 1/8 | 1/8 | 1/8 | 1/8 | 1/8 | 1/8 | 1/8 | 1/16 | 1/16 | 1/16 | 1/16 | 1/16 | 1/16 | 1/16 | 1/32 | 1/32 | |
| 345 | | | 3/8 | 1/4 | 1/4 | 1/4 | 1/4 | 1/4 | 3/16 | 3/16 | 5/32 | 5/32 | 5/32 | 1/8 | 1/8 | 1/8 | 1/8 | 1/8 | 1/8 | 1/8 | 1/8 | 1/16 | 1/16 | 1/16 | 1/16 | 1/16 | 1/16 | 1/16 | 1/16 | 1/32 | 1/32 |
| 360 | | | 3/8 | 1/4 | 1/4 | 1/4 | 1/4 | 1/4 | 3/16 | 3/16 | 5/32 | 5/32 | 5/32 | 1/8 | 1/8 | 1/8 | 1/8 | 1/8 | 1/8 | 1/8 | 1/8 | 1/16 | 1/16 | 1/16 | 1/16 | 1/16 | 1/16 | 1/16 | 1/32 | 1/32 | |
| 375 | | | 3/8 | 1/4 | 1/4 | 1/4 | 1/4 | 1/4 | 3/16 | 3/16 | 5/32 | 5/32 | 5/32 | 1/8 | 1/8 | 1/8 | 1/8 | 1/8 | 1/8 | 1/8 | 1/8 | 1/16 | 1/16 | 1/16 | 1/16 | 1/16 | 1/16 | 1/16 | 1/16 | 1/32 | 1/32 |
| 395 | | | 1/4 | 1/4 | 1/4 | 1/4 | 1/4 | 1/4 | 3/16 | 3/16 | 5/32 | 5/32 | 5/32 | 1/8 | 1/8 | 1/8 | 1/8 | 1/8 | 1/8 | 1/8 | 1/8 | 1/16 | 1/16 | 1/16 | 1/16 | 1/16 | 1/16 | 1/16 | 1/32 | 1/32 | |
| 410 | | | 1/4 | 1/4 | 1/4 | 1/4 | 1/4 | 1/4 | 3/16 | 3/16 | 5/32 | 5/32 | 5/32 | 1/8 | 1/8 | 1/8 | 1/8 | 1/8 | 1/8 | 1/8 | 1/8 | 1/16 | 1/16 | 1/16 | 1/16 | 1/16 | 1/16 | 1/16 | 1/16 | 1/32 | 1/32 |
| 425 | | | 1/4 | 1/4 | 1/4 | 1/4 | 1/4 | 1/4 | 3/16 | 3/16 | 5/32 | 5/32 | 5/32 | 1/8 | 1/8 | 1/8 | 1/8 | 1/8 | 1/8 | 1/8 | 1/8 | 1/16 | 1/16 | 1/16 | 1/16 | 1/16 | 1/16 | 1/16 | 1/32 | 1/32 | |
| 440 | | | 1/4 | 1/4 | 1/4 | 1/4 | 1/4 | 1/4 | 3/16 | 3/16 | 5/32 | 5/32 | 5/32 | 1/8 | 1/8 | 1/8 | 1/8 | 1/8 | 1/8 | 1/8 | 1/8 | 1/16 | 1/16 | 1/16 | 1/16 | 1/16 | 1/16 | 1/16 | 1/16 | 1/32 | 1/32 |
| 460 | | | 1/4 | 1/4 | 1/4 | 1/4 | 1/4 | 1/4 | 3/16 | 3/16 | 5/32 | 5/32 | 5/32 | 1/8 | 1/8 | 1/8 | 1/8 | 1/8 | 1/8 | 1/8 | 1/8 | 1/16 | 1/16 | 1/16 | 1/16 | 1/16 | 1/16 | 1/16 | 1/32 | 1/32 | |
| 475 | | | 5/16 | 1/4 | 1/4 | 1/4 | 1/4 | 1/4 | 3/16 | 3/16 | 5/32 | 5/32 | 5/32 | 1/8 | 1/8 | 1/8 | 1/8 | 1/8 | 1/8 | 1/8 | 1/8 | 1/16 | 1/16 | 1/16 | 1/16 | 1/16 | 1/16 | 1/16 | 1/16 | 1/32 | 1/32 |
| 500 | | | 5/16 | 1/4 | 1/4 | 1/4 | 1/4 | 1/4 | 3/16 | 3/16 | 5/32 | 5/32 | 5/32 | 1/8 | 1/8 | 1/8 | 1/8 | 1/8 | 1/8 | 1/8 | 1/16 | 1/16 | 1/16 | 1/16 | 1/16 | 1/16 | 1/16 | 1/16 | 1/32 | 1/32 | |

^a Remember that, if the speed is too low the cycle time increases.

Regardless of which model you choose, you'll get a product with superior ergonomics and productivity.

- Quiet – Very low noise level.
- Comfortable grip – For high precision.
- Two-hand grip available – Gives even greater flexibility.
- Lubrication-free – For clean working environment and operator comfort.



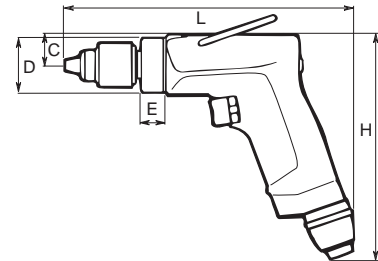
| Model | Free speed r/min | Chuck capacity in | Weight with chuck lb | Air consumption at free speed cfm | Hose size | | Air inlet thread NPT | Power hp | Stall torque Nm | With chuck Ordering No. | Without chuck | |
|---|---------------------|----------------------|----------------------------|---|-----------|-----|----------------------------|-------------|-----------------------|----------------------------|---------------|--------------|
| | | | | | mm | in | | | | | Model | Ordering No. |
| Non-reversible drills with air supply through handle | | | | | | | | | | | | |
| LBB16 EP-003 ^b | 300 | 3/8 | 1.5 | 17.0 | 6.3 | 1/4 | 1/4 | 0.4 | - | 8421 0108 01 | 003-U | 8421 0108 02 |
| LBB16 EP-005 ^b | 500 | 3/8 | 1.5 | 17.0 | 6.3 | 1/4 | 1/4 | 0.4 | 21.6 | 8421 0108 06 | 005-U | 8421 0108 07 |
| LBB16 EP-010 | 1000 | 3/8 | 1.5 | 17.0 | 6.3 | 1/4 | 1/4 | 0.4 | 7.8 | 8421 0108 10 | 010-U | 8421 0108 11 |
| LBB16 EP-024 ^a | 2400 | 1/4 | 1.2 | 17.0 | 6.3 | 1/4 | 1/4 | 0.4 | 4.2 | 8421 0108 20 | 024-U | 8421 0108 21 |
| LBB16 EP-033 ^a | 3300 | 1/4 | 1.2 | 17.0 | 6.3 | 1/4 | 1/4 | 0.4 | 3.4 | 8421 0108 30 | 033-U | 8421 0108 31 |
| LBB16 EP-045 ^a | 4500 | 1/4 | 1.2 | 17.0 | 6.3 | 1/4 | 1/4 | 0.4 | 2.0 | 8421 0108 40 | 045-U | 8421 0108 41 |
| LBB16 EP-060 ^a | 6000 | 1/4 | 1.2 | 17.0 | 6.3 | 1/4 | 1/4 | 0.4 | 1.7 | 8421 0108 50 | 060-U | 8421 0108 51 |
| LBB16 EP-200 ^a | 20000 | 1/4 | 1.2 | 17.0 | 6.3 | 1/4 | 1/4 | 0.4 | 0.5 | 8421 0108 60 | 200-U | - |
| LBB16 EPX-005 ^b | 500 | 1/2 | 1.5 | 20.0 | 6.3 | 1/4 | 1/4 | 0.45 | 25.2 | 8421 0108 08 | 005-U | 8421 0108 09 |
| LBB16 EPX-010 ^b | 1000 | 3/8 | 1.5 | 20.0 | 6.3 | 1/4 | 1/4 | 0.45 | 12.3 | 8421 0108 12 | 010-U | 8421 0108 03 |
| LBB16 EPX-024 ^a | 2400 | 1/4 | 1.2 | 20.0 | 6.3 | 1/4 | 1/4 | 0.45 | 4.9 | 8421 0108 22 | 024-U | 8421 0108 23 |
| LBB16 EPX-033 ^a | 3300 | 1/4 | 1.2 | 20.0 | 6.3 | 1/4 | 1/4 | 0.45 | 3.7 | 8421 0108 32 | 033-U | 8421 0108 33 |
| LBB16 EPX-045 ^a | 4500 | 1/4 | 1.2 | 20.0 | 6.3 | 1/4 | 1/4 | 0.45 | 3.0 | 8421 0108 42 | 045-U | 8421 0108 43 |
| LBB16 EPX-060 ^a | 6000 | 1/4 | 1.2 | 20.0 | 6.3 | 1/4 | 1/4 | 0.45 | 2.3 | 8421 0108 52 | 060-U | 8421 0108 53 |
| LBB16 EPX-200 ^a | 20000 | 1/4 | 1.2 | 20.0 | 6.3 | 1/4 | 1/4 | 0.45 | 0.6 | 8421 0108 82 | 200-U | 8421 0108 63 |
| LBB26 EPX-003 ^b | 300 | 1/2 | 1.8 | 31.8 | 10.0 | 3/8 | 1/4 | 0.7 | 53.5 | 8421 0500 00 | 003-U | 8421 0500 01 |
| LBB26 EPX-005 ^b | 500 | 1/2 | 1.8 | 31.8 | 10.0 | 3/8 | 1/4 | 0.7 | 31.6 | 8421 0500 02 | 005-U | 8421 0500 03 |
| LBB26 EPX-007 ^b | 700 | 1/2 | 1.8 | 31.8 | 10.0 | 3/8 | 1/4 | 0.7 | 24.6 | 8421 0500 04 | 007-U | 8421 0500 05 |
| LBB26 EPX-013 ^{ab} | 1300 | 3/8 | 1.7 | 31.8 | 10.0 | 3/8 | 1/4 | 0.7 | 14.7 | 8421 0500 06 | 013-U | 8421 0500 07 |
| LBB26 EPX-019 ^a | 1900 | 3/8 | 1.7 | 31.8 | 10.0 | 3/8 | 1/4 | 0.7 | 9.9 | 8421 0500 24 | 019-U | 8421 0500 25 |
| LBB26 EPX-026 ^a | 2600 | 5/16 | 1.7 | 31.8 | 10.0 | 3/8 | 1/4 | 0.7 | 7.7 | 8421 0500 08 | 026-U | 8421 0500 09 |
| LBB26 EPX-033 ^a | 3300 | 5/16 | 1.5 | 31.8 | 10.0 | 3/8 | 1/4 | 0.7 | 5.7 | 8421 0500 10 | 033-U | 8421 0500 11 |
| LBB26 EPX-045 ^a | 4500 | 5/16 | 1.5 | 31.8 | 10.0 | 3/8 | 1/4 | 0.7 | 4.1 | 8421 0500 12 | 045-U | 8421 0500 13 |
| LBB26 EPX-060 ^a | 6000 | 5/16 | 1.5 | 31.8 | 10.0 | 3/8 | 1/4 | 0.7 | 3.3 | 8421 0500 14 | 060-U | 8421 0500 15 |
| LBB26 EPX-200 ^a | 22000 | 1/4 | 1.5 | 31.8 | 10.0 | 3/8 | 1/4 | 0.7 | 0.8 | 8421 0500 28 | 200-U | 8421 0500 29 |
| LBB36 H005 ^b | 500 | - | 3.3 | 34.9 | 10.0 | 3/8 | 3/8 | 0.9 | 43.8 | - | -H005U | 8421 0408 03 |
| LBB36 H007 ^b | 700 | 1/2 | 3.5 | 34.9 | 10.0 | 3/8 | 3/8 | 0.9 | 37.2 | 8421 0408 07 | -H007U | 8421 0408 05 |
| LBB36 H013 ^a | 1300 | 3/8 | 3.3 | 34.9 | 10.0 | 3/8 | 3/8 | 0.9 | 19.5 | 8421 0408 15 | -H013U | 8421 0408 13 |
| LBB36 H026 ^a | 2600 | 3/8 | 2.5 | 34.9 | 10.0 | 3/8 | 3/8 | 0.9 | 10.3 | 8421 0408 33 | -H026U | 8421 0408 31 |
| LBB36 H033 ^a | 3300 | 3/8 | 2.5 | 34.9 | 10.0 | 3/8 | 3/8 | 0.9 | 8.6 | 8421 0408 41 | -H033U | 8421 0408 39 |
| LBB36 H060 ^a | 6000 | 1/4 | 2.5 | 34.9 | 10.0 | 3/8 | 3/8 | 0.9 | 5.0 | 8421 0408 49 | -H060U | 8421 0408 47 |
| LBB36 H200 ^a | 22000 | 1/4 | 2.2 | 34.9 | 10.0 | 3/8 | 3/8 | 0.9 | 1.3 | 8421 0408 55 | -H200U | 8421 0408 53 |
| LBB37 H006 | 600 | 1/2 | 2.5 | 44.0 | 10.0 | 3/8 | 3/8 | 1.1 | 48.0 | 8421 0608 06 | -H006U | 8421 0608 14 |
| LBB37 H015 | 1500 | 3/8 | 3.3 | 44.0 | 10.0 | 3/8 | 3/8 | 1.1 | 22.5 | 8421 0608 05 | -H015U | 8421 0608 15 |
| LBB37 H037 | 3700 | 3/8 | 2.5 | 44.0 | 10.0 | 3/8 | 3/8 | 1.1 | 9.2 | 8421 0608 13 | -H037U | 8421 0608 16 |
| LBB37 H065 | 6500 | 1/4 | 2.5 | 44.0 | 10.0 | 3/8 | 3/8 | 1.1 | 5.0 | 8421 0608 11 | -H065U | 8421 0608 17 |
| LBB37 H230 | 23000 | 1/4 | 2.2 | 44.0 | 10.0 | 3/8 | 3/8 | 1.1 | 1.3 | 8421 0608 03 | -H230U | 8421 0608 18 |
| LBB45 H004 ^b | 400 | 5/8 | 9.3 | 21.0 | 10.0 | 3/8 | 1/4 | 0.9 | - | 8421 0501 16 | - | - |
| LBB45 H006 ^b | 600 | 5/8 | 9.3 | 21.0 | 10.0 | 3/8 | 1/4 | 0.9 | - | 8421 0501 24 | -H006U | 8421 0501 40 |
| LBB45 H017 ^b | 1700 | 5/8 | 9.3 | 21.0 | 10.0 | 3/8 | 1/4 | 0.9 | - | 8421 0501 32 | - | - |
| ATEX certified models | | | | | | | | | | | | |
| LBB26 EPX005-ATEX | 500 | 1/2 | 1.8 | 31.8 | 10.0 | 3/8 | 1/4 | 0.7 | - | 8421 0500 22 | - | - |
| LBB26 EPX007-ATEX | 700 | 1/2 | 1.8 | 31.8 | 10.0 | 3/8 | 1/4 | 0.7 | - | 8421 0500 21 | - | - |
| LBB26 EPX013-ATEX | 1300 | 3/8 | 1.7 | 31.8 | 10.0 | 3/8 | 1/4 | 0.7 | - | 8421 0500 20 | - | - |
| LBB26 EPX026-ATEX | 2600 | 5/16 | 1.7 | 31.8 | 10.0 | 3/8 | 1/4 | 0.7 | - | 8421 0500 19 | - | - |

^a Including chuck guard. ^b Including support handle.

Dimensions

LBB EP/EPX/H

| Model | L mm | H mm | C mm | D mm | E mm |
|------------------|---------|---------|---------|---------|---------|
| LBB16 EP/EPX-200 | 177 | 131 | 16.5 | 31.4 | 13.8 |
| LBB16 EP/EPX-060 | 177 | 131 | 16.5 | 31.4 | 13.8 |
| LBB16 EP/EPX-045 | 177 | 131 | 16.5 | 31.4 | 13.8 |
| LBB16 EP/EPX-033 | 177 | 131 | 16.5 | 31.4 | 13.8 |
| LBB16 EP/EPX-024 | 177 | 131 | 16.5 | 31.4 | 13.8 |
| LBB16 EP/EPX-010 | 190 | 131 | 16.5 | 31.4 | 27.0 |
| LBB16 EP/EPX-005 | 190 | 131 | 16.5 | 31.4 | 27.0 |
| LBB16 EP-003 | 190 | 131 | 16.5 | 31.4 | 27.0 |
| LBB26 EPX-060 | 180 | 147 | 21 | 39 | - |
| LBB26 EPX-045 | 180 | 147 | 21 | 39 | - |
| LBB26 EPX-033 | 180 | 147 | 21 | 39 | - |
| LBB26 EPX-026 | 180 | 147 | 21 | 39 | - |
| LBB26 EPX-019 | 196 | 147 | 21 | 39 | - |
| LBB26 EPX-013 | 196 | 147 | 21 | 39 | - |
| LBB26 EPX-007 | 196 | 147 | 21 | 39 | - |
| LBB26 EPX-005 | 196 | 147 | 21 | 39 | - |
| LBB26 EPX-003 | 196 | 147 | 21 | 39 | - |
| LBB36 H200 | 217 | 157 | 23 | 41.5 | 16.5 |
| LBB36 H060 | 217 | 157 | 23 | 41.5 | 16.5 |
| LBB36 H033 | 217 | 157 | 23 | 41.5 | 16.5 |
| LBB36 H026 | 217 | 157 | 23 | 41.5 | 16.5 |
| LBB36 H013 | 256 | 157 | 23 | 41.5 | 64.0 |
| LBB36 H007 | 256 | 157 | 23 | 41.5 | 64.0 |
| LBB36 H005 | 256 | 157 | 23 | 41.5 | 64.0 |
| LBB37 H230 | 217 | 157 | 23 | 41.5 | 16.5 |
| LBB37 H065 | 217 | 157 | 23 | 41.5 | 16.5 |
| LBB37 H037 | 217 | 157 | 23 | 41.5 | 16.5 |
| LBB37 H015 | 256 | 157 | 23 | 41.5 | 64.0 |
| LBB37 H006 | 256 | 157 | 23 | 41.5 | 64.0 |
| LBB45 H006 | 360 | 185 | 33 | 60 | 113 |
| LBB45 H017 | 360 | 185 | 33 | 60 | 113 |
| LBB45 H004 | 360 | 185 | 33 | 60 | 113 |



Accessories Included

Chuck, chuck key, hose nipple.

LBB16 and -36/37 with suspension yoke and with chuck guard where possible.

LBB16 and -36/37 have a 3/8" -24 UNF spindle thread.

LBB36 H005 and LBB37 H006 have a 1/2" -20 UNF thread.

LBB45 has a JT3 taper mount.

Optional Accessories

KEY CHUCKS

| Mount | Body diameter mm | Chuck capacity in | Ordering No. | | |
|-----------|---------------------|----------------------|------------------|--------------|-----------------|
| | | | Chuck (key incl) | Key only | Key designation |
| 1/2-20UNF | 43 | 5/8 | 4021 0289 01 | 4021 0465 00 | S2 |
| 3/8-24UNF | 30 | 1/4 | 4021 0283 00 | 4021 0293 00 | S1 |
| 3/8-24UNF | 30 | 5/16 | 4021 0495 00 | 4021 0293 00 | S1 |
| 3/8-24UNF | 36 | 3/8 | 4021 0416 00 | 4021 0449 00 | S8 |
| 3/8-24UNF | 46 | 1/2 | 4021 0289 00 | 4021 0465 00 | S2 |
| JT3 | 59 | 5/8 | 4021 0423 00 | 4021 0301 00 | S3 |



Key chuck

QUICK CHUCKS

| Mount | Chuck dia mm | Chuck capacity in | Ordering No. |
|-----------|-----------------|----------------------|--------------|
| 3/8-24UNF | 34 | 1/4 | 4021 0400 00 |
| 3/8-24UNF | 34 | 5/16 | 4021 0401 00 |
| 3/8-24UNF | 36 | 3/8 | 4021 0402 00 |
| 3/8-24UNF | 36 | 1/2 | 4021 0403 00 |



Quick chuck

Optional Accessories

COLLET CHUCK AND COLLETS

| Designation | Capacity | | Ordering No. | |
|-------------|---------------|------|--------------|--------------|
| | mm | in | | |
| Collet | 3 | | 4150 0081 00 | |
| | 6 | | 4150 0075 00 | |
| | 8 | 5/16 | | 4150 0074 00 |
| | | 1/8 | | 4150 0082 00 |
| | | 5/32 | | 4150 0648 00 |
| | | 3/16 | | 4150 0649 00 |
| | | 1/4 | | 4150 0076 00 |
| | Collet holder | | | 4110 0844 90 |
| Collet nut | | | 4150 0760 00 | |



Collet chuck and collets

CHUCK GUARDS

| For model | Max chuck dia mm | Ordering No. |
|--------------------|------------------|--------------|
| LBB16 ^a | 30 | 4110 1619 04 |
| LBB26 | 36 | 4110 1728 02 |
| LBB26 | 30 | 4110 1728 03 |
| LBB36 ^b | 36 | 4110 1415 00 |
| LBB37 ^b | 36 | 4110 1415 00 |

^a The guards do not fit 1000 r/min models, 500 r/min and 300 r/min models.

^b The chuck guards do not fit the 500 r/min, 600 r/min or 700 r/min models.



Chuck guard

FLEX CONNECT

| For model | Ordering No. |
|-----------|--------------|
| LBB16 | 4110 1601 80 |



Flex connect

SPOT SUCTION ATTACHMENT

| For model | Hose size in | Spot suction kit ^a Ordering No. | Hose kit Ordering No. |
|-----------|--------------|--|-----------------------|
| LBB16 | 1 1/4 | 4110 1715 80 | 4112 1227 00 |
| LBB26 | 1 1/4 | 4110 1715 84 | 4112 1227 00 |
| LBB36/37 | 1 1/4 | 4110 1716 80 | 4112 1227 00 |

^a Spare part, nose piece kit, Ordering No. 4110 1700 90.

Other standard sizes of front nozzle available.



Spot suction attachment

POWER FEED ARM FOR EXTRA FEED FORCE – LBB36 H005 AND LBB37 H006

| | Ordering No. |
|--|--------------|
| Adapter piece (SR295), lever arm (SR201), chain (SR202) and No. 2 Morse socket (SR206) | 4110 1416 80 |
| Two extension pieces (SR204-1 and SR204-2), 370 and 750 mm long | 4110 1417 80 |
| No. 2 Morse socket | 4110 1416 01 |



Power feed arm

Optional Accessories

SUPPORT HANDLES

| For model | Ordering No. |
|-----------|--------------|
| LBB16 | 4110 1355 92 |
| LBB26 | 4110 1355 95 |
| LBB36/37 | 4110 1355 82 |
| LBB45 | 4110 1355 84 |



Support handle

OPTIONAL ACCESSORIES – LBB45

| Designation | Ordering No. |
|--------------------|--------------|
| No. 2 Morse socket | 4130 1080 00 |

Productivity Kits

| Model | Max air flow | Hose 16.4 ft | Coupling | Lubrication | Ordering No. |
|--------------------------------|--------------|--------------|--------------|-------------|--------------|
| MIDI Optimizer F/R EQ08US-C06 | 12 cfm | Cabclair 06 | ErgoQIC 08US | No | 8202 0850 21 |
| MIDI Optimizer F/RD EQ08US-C06 | 19 cfm | Cabclair 06 | ErgoQIC 08US | Yes | 8202 0850 22 |
| MIDI Optimizer F/RD EQ08US-C08 | 19 cfm | Cabclair 08 | ErgoQIC 08US | Yes | 8202 0850 23 |
| MIDI Optimizer F/R EQ08US-C08 | 19 cfm | Cabclair 08 | ErgoQIC 08US | No | 8202 0850 24 |
| MIDI Optimizer F/RD EQ10US-C10 | 34 cfm | Cabclair 10 | ErgoQIC 10US | Yes | 8202 0850 25 |
| MIDI Optimizer F/RD EQ10US-R10 | 34 cfm | Rubair 10 | ErgoQIC 10US | Yes | 8202 0850 26 |
| MIDI Optimizer F/RD EQ10US-C13 | 50 cfm | Cabclair 13 | ErgoQIC 10US | Yes | 8202 0850 27 |
| MIDI Optimizer F/RD EQ10US-R13 | 50 cfm | Rubair 13 | ErgoQIC 10US | Yes | 8202 0850 28 |

NOTE: Tool nipple is not included in the Productivity kit and needs to be order separately together with the tool.



Service Kits

| | |
|-----------|--------------|
| LBB16 | 4081 0271 90 |
| LBB26 | 4081 2028 90 |
| LGB/LBV34 | 4081 0035 90 |
| LBB36/37 | 4081 0194 90 |
| LBB45 | 4081 0139 90 |

Atlas Copco straight drills are primarily intended for vertical drilling operations and for drilling in cramped spaces.

- Quiet – Very low noise level.
- Very high power to weight ratio.
- Adjustable exhaust –The exhaust air is directed away from the operator.
- Lubrication-free – LBB16 drills are lubrication-free for clean working environment and operator comfort.



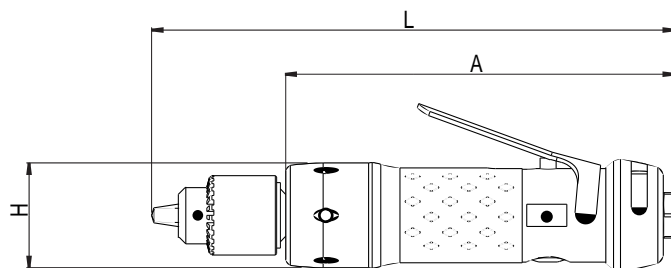
LBB16

| Model | Free speed ^a r/min | Chuck capacity in | Weight lb | Air consumption at free speed cfm | Hose size | | Air inlet thread NPT | Power hp | With chuck Ordering No. | Without chuck | |
|---------------------------------|----------------------------------|----------------------|--------------|---|-----------|-----|----------------------------|-------------|----------------------------|---------------|--------------|
| | | | | | mm | in | | | | Model | Ordering No. |
| Drills with rear exhaust | | | | | | | | | | | |
| LBB16 S260 | 26000 | 1/4 | 1.1 | 17 | 6.3 | 1/4 | 1/4 | 0.47 | 8421 0210 00 | S260-U | 8421 0210 10 |
| LBB16 S064 | 6400 | 1/4 | 1.1 | 17 | 6.3 | 1/4 | 1/4 | 0.47 | 8421 0210 01 | S064-U | 8421 0210 11 |
| LBB16 S045 | 4500 | 1/4 | 1.1 | 17 | 6.3 | 1/4 | 1/4 | 0.47 | 8421 0210 02 | S045-U | 8421 0210 12 |
| LBB16 S038 | 3800 | 1/4 | 1.1 | 17 | 6.3 | 1/4 | 1/4 | 0.47 | 8421 0210 03 | S038-U | 8421 0210 13 |
| LBB16 S029 | 2900 | 5/16 | 1.2 | 17 | 6.3 | 1/4 | 1/4 | 0.47 | 8421 0210 04 | S029-U | 8421 0210 14 |
| LBB16 S022 | 2200 | 3/8 | 1.5 | 17 | 6.3 | 1/4 | 1/4 | 0.47 | 8421 0210 05 | S022-U | 8421 0210 15 |
| LBB16 S012 | 1200 | 3/8 | 1.5 | 17 | 6.3 | 1/4 | 1/4 | 0.47 | 8421 0210 06 | S012-U | 8421 0210 16 |

^a The free speed can be reduced to 50% of the maximum speed using the trim valve.

Dimensions

| Model | L | H | A |
|------------|-----|----|-----|
| LBB16 S260 | 196 | 39 | 146 |
| LBB16 S064 | 196 | 39 | 146 |
| LBB16 S045 | 196 | 39 | 146 |
| LBB16 S038 | 196 | 39 | 146 |
| LBB16 S029 | 196 | 39 | 146 |
| LBB16 S022 | 219 | 39 | 159 |
| LBB16 S012 | 219 | 39 | 159 |



Accessories Included

Chuck, chuck key
Suspension yoke and chuck guard

Optional Accessories

KEY CHUCKS

| Mount | Body diameter mm | Chuck capacity in | Ordering No. | | |
|-----------|------------------|-------------------|------------------|--------------|-----------------|
| | | | Chuck (key incl) | Key only | Key designation |
| 1/2-20UNF | 43 | 5/8 | 4021 0289 01 | 4021 0465 00 | S2 |
| 3/8-24UNF | 30 | 1/4 | 4021 0283 00 | 4021 0293 00 | S1 |
| 3/8-24UNF | 30 | 5/16 | 4021 0495 00 | 4021 0293 00 | S1 |
| 3/8-24UNF | 36 | 3/8 | 4021 0416 00 | 4021 0449 00 | S8 |
| 3/8-24UNF | 46 | 1/2 | 4021 0289 00 | 4021 0465 00 | S2 |
| JT3 | 59 | 5/8 | 4021 0423 00 | 4021 0301 00 | S3 |



Key chuck

QUICK CHUCKS

| Mount | Chuck dia mm | Chuck capacity in | Ordering No. |
|-----------|--------------|-------------------|--------------|
| 3/8-24UNF | 34 | 1/4 | 4021 0400 00 |
| 3/8-24UNF | 34 | 5/16 | 4021 0401 00 |
| 3/8-24UNF | 36 | 3/8 | 4021 0402 00 |
| 3/8-24UNF | 36 | 1/2 | 4021 0403 00 |



Quick chuck

COLLET CHUCK AND COLLETS

| Designation | Capacity | | Ordering No. |
|-------------|---------------|------|--------------|
| | mm | in | |
| Collet | 3 | | 4150 0081 00 |
| | 6 | | 4150 0075 00 |
| | 8 | 5/16 | 4150 0074 00 |
| | | 1/8 | 4150 0082 00 |
| | | 5/32 | 4150 0648 00 |
| | | 3/16 | 4150 0649 00 |
| | | 1/4 | 4150 0076 00 |
| | Collet holder | | |
| Collet nut | | | 4150 0760 00 |



Collet chuck and collets

SAFETY LEVER

| For model | Ordering No. |
|-----------|--------------|
| LBB16S | 4110 1787 90 |



Safety lever



Service Kits

LBB16 4081 0438 90

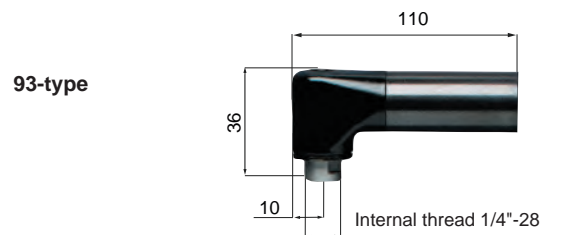
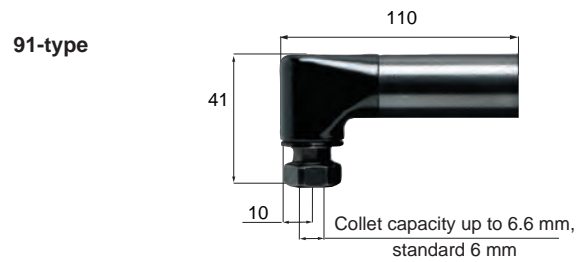
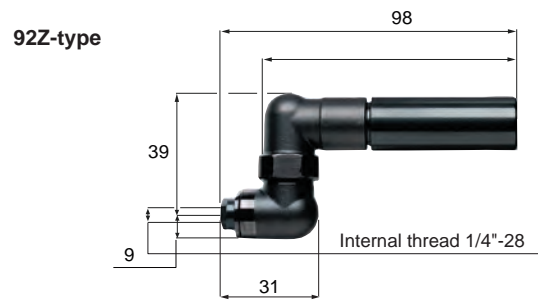
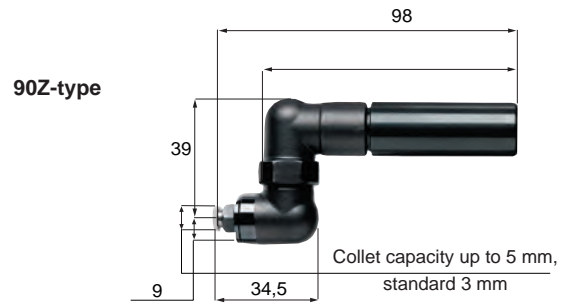
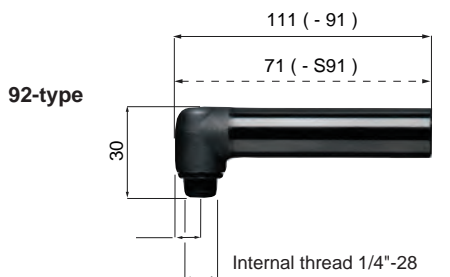
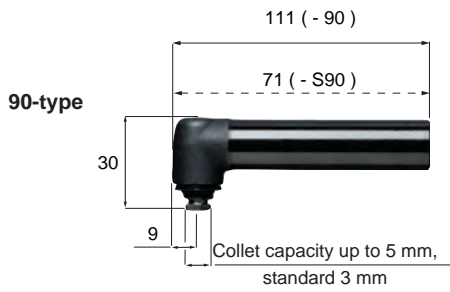
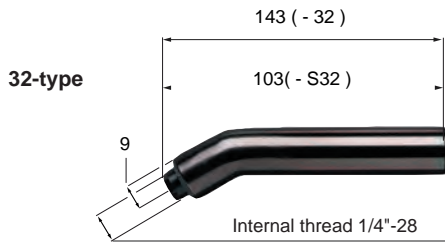
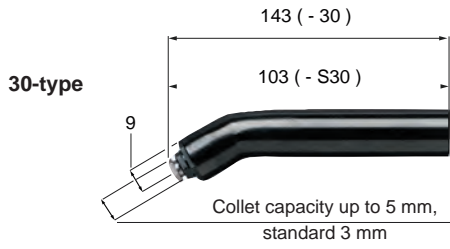
- Quiet – Very low noise level.
- Low air consumption – Good operating economy.
- Side exhaust – The air can be directed to suit the operator.
- Rear exhaust – The air is piped away through a pliant hose.
- Lubrication-free – For clean working environment and operator comfort.
- Collet chuck or threaded spindle.
- Multiple lever options.



| Model | Free speed r/min | Setting range rpm | Collet or chuck capacity in | Weight lb | Air consumption at free speed cfm | Hose dimension | | Air inlet thread NPT | Power hp | Ordering No. |
|--|---------------------|-------------------------|-----------------------------------|--------------|---|-------------------|-----|----------------------------|-------------|--------------|
| | | | | | | mm | in | | | |
| 30° angle head | | | | | | | | | | |
| LBV11 S029-S30 | 2900 | – | 13/64 | 1.1 | 8.5 | 5.0 | 1/8 | 1/8 | 0.16 | 8421 0108 70 |
| LBV16 032-30 | 3200 | 1500-3200 | 13/64 | 1.1 | 18.4 | 6.3 | 1/4 | 1/4 | 0.4 | 8421 0110 05 |
| LBV16 032-S30 | 3200 | 1500-3200 | 13/64 | 1.0 | 18.4 | 6.3 | 1/4 | 1/4 | 0.4 | 8421 0110 04 |
| LBV16 032-32 | 3200 | 1500-3200 | c | 1.1 | 18.4 | 6.3 | 1/4 | 1/4 | 0.4 | 8421 0110 07 |
| LBV16 032-S32 | 3200 | 1500-3200 | c | 1.0 | 18.4 | 6.3 | 1/4 | 1/4 | 0.4 | 8421 0110 06 |
| LBV16 045-30 | 4500 | 3200-4500 | 13/64 | 1.1 | 18.4 | 6.3 | 1/4 | 1/4 | 0.4 | 8421 0110 71 |
| LBV36 S030-30 ^e | 3000 | – | 13/64 | 2.2 | 36.0 | 10.0 | 3/8 | 1/4 | 0.73 | 8421 0414 70 |
| 45° angle head | | | | | | | | | | |
| LBV16 032-45 | 3200 | 1500-3200 | 13/64 | 1.1 | 18.4 | 6.3 | 1/4 | 1/4 | 0.4 | 8421 0110 59 |
| LBV16 032-46 | 3200 | 1500-3200 | c | 1.1 | 18.4 | 6.3 | 1/4 | 1/4 | 0.4 | 8421 0110 60 |
| 90° angle head | | | | | | | | | | |
| LBV11 S029-S90 | 2900 | – | 13/64 | 1.1 | 8.5 | 5.0 | 1/8 | 1/8 | 0.16 | 8421 0109 79 |
| LBV16 032-90 | 3200 | 1500-3200 | 13/64 | 1.1 | 18.4 | 6.3 | 1/4 | 1/4 | 0.4 | 8421 0110 00 |
| LBV16 032-S90 | 3200 | 1500-3200 | 13/64 | 1.0 | 18.4 | 6.3 | 1/4 | 1/4 | 0.4 | 8421 0110 01 |
| LBV16 032-92 | 3200 | 1500-3200 | c | 1.1 | 18.4 | 6.3 | 1/4 | 1/4 | 0.4 | 8421 0110 03 |
| LBV16 032-S92 | 3200 | 1500-3200 | c | 1.0 | 18.4 | 6.3 | 1/4 | 1/4 | 0.4 | 8421 0110 02 |
| LBV16 045-90 | 4500 | 3200-4500 | 13/64 | 1.1 | 18.4 | 6.3 | 1/4 | 1/4 | 0.4 | 8421 0110 20 |
| LBV16 045-92 | 4500 | 3200-4500 | c | 1.1 | 18.4 | 6.3 | 1/4 | 1/4 | 0.4 | 8421 0110 21 |
| LBV16 055-90 | 5500 | 4500-5500 | 13/64 | 1.1 | 18.4 | 6.3 | 1/4 | 1/4 | 0.4 | 8421 0110 23 |
| LBV16 055-S92 | 5500 | 4500-5500 | c | 1.0 | 18.4 | 6.3 | 1/4 | 1/4 | 0.4 | 8421 0110 58 |
| LBV36 S030-90 ^e | 3000 | – | 13/64 | 2.2 | 36.0 | 10.0 | 3/8 | 1/4 | 0.73 | 8421 0414 60 |
| LBV36 S030-92 ^e | 3000 | – | c | 2.2 | 36.0 | 10.0 | 3/8 | 1/4 | 0.73 | 8421 0414 64 |
| LBV36 S045-90 ^e | 4500 | – | 13/64 | 2.2 | 36.0 | 10.0 | 3/8 | 1/4 | 0.73 | 8421 0414 62 |
| 360° angle head | | | | | | | | | | |
| LBV16 032-90Z | 3200 | 1500-3200 | 13/64 | 1.1 | 18.4 | 6.3 | 1/4 | 1/4 | 0.4 | 8421 0110 64 |
| LBV16 032-92Z | 3200 | 1500-3200 | c | 1.1 | 18.4 | 6.3 | 1/4 | 1/4 | 0.4 | 8421 0110 68 |
| 90° angle head – large angle head | | | | | | | | | | |
| LBV16 005-91 | 500 | 200-500 | 1/4 | 1.2 | 18.4 | 6.3 | 1/4 | 1/4 | 0.4 | 8421 0110 11 |
| LBV16 005-93 | 500 | 200-500 | c | 1.2 | 18.4 | 6.3 | 1/4 | 1/4 | 0.4 | 8421 0110 12 |
| LBV16 010-91 | 1000 | 500-1000 | 1/4 | 1.2 | 18.4 | 6.3 | 1/4 | 1/4 | 0.4 | 8421 0110 16 |
| LBV16 010-93 | 1000 | 500-1000 | c | 1.2 | 18.4 | 6.3 | 1/4 | 1/4 | 0.4 | 8421 0110 17 |
| LBV16 018-91 | 1800 | 800-1800 | 1/4 | 1.2 | 18.4 | 6.3 | 1/4 | 1/4 | 0.4 | 8421 0110 18 |
| LBV16 018-93 | 1800 | 800-1800 | c | 1.2 | 18.4 | 6.3 | 1/4 | 1/4 | 0.4 | 8421 0110 19 |
| LBV16 032-91 | 3200 | 1500-3200 | 1/4 | 1.2 | 18.4 | 6.3 | 1/4 | 1/4 | 0.4 | 8421 0110 09 |
| LBV16 032-93 | 3200 | 1500-3200 | c | 1.2 | 18.4 | 6.3 | 1/4 | 1/4 | 0.4 | 8421 0110 10 |
| LBV16 032-S93 | 3200 | 1500-3200 | c | 1.2 | 18.4 | 6.3 | 1/4 | 1/4 | 0.4 | 8421 0110 39 |
| LBV16 045-91 | 4500 | 3200-4500 | 1/4 | 1.2 | 18.4 | 6.3 | 1/4 | 1/4 | 0.4 | 8421 0110 38 |
| LBV36 S030-91 ^e | 3000 | – | 1/4 | 2.2 | 36.0 | 10.0 | 3/8 | 1/4 | 0.73 | 8421 0414 50 |
| LBV36 S060-91 ^e | 6000 | – | 1/4 | 2.2 | 36.0 | 10.0 | 3/8 | 1/4 | 0.73 | 8421 0414 51 |
| LBV36 S030-93 ^e | 3000 | – | c | 2.2 | 36.0 | 10.0 | 3/8 | 1/4 | 0.73 | 8421 0414 52 |
| LBV36 S060-93 ^e | 6000 | – | c | 2.2 | 36.0 | 10.0 | 3/8 | 1/4 | 0.73 | 8421 0414 53 |
| 90° angle head – Key chuck models | | | | | | | | | | |
| LBV16 018-11 | 1800 | 800-1800 | 5/16 | 1.7 | 18.4 | 6.3 | 1/4 | 1/4 | 0.4 | 8421 0110 22 |
| LBV34 S005 ^b | 500 | – | 1/2 ^a | 4.6 | 15.9 | 10.0 | 3/8 | 1/4 | 0.6 | 8421 0309 04 |
| LBV34 S010 ^b | 1000 | – | 3/8 ^a | 4.4 | 15.9 | 10.0 | 3/8 | 1/4 | 0.6 | 8421 0309 12 |
| LBV34 S040 ^b | 4000 | – | 1/4 ^a | 3.3 | 15.9 | 10.0 | 3/8 | 1/4 | 0.6 | 8421 0309 46 |
| 90° angle head – heavy-duty | | | | | | | | | | |
| LBV37 030 | 3000 | – | c | 2.4 | 46 | 10.0 | 3/8 | 3/8 | 1.1 | 8421 0414 54 |
| LBV37 HD030 | 3000 | – | d | 2.4 | 46 | 10.0 | 3/8 | 3/8 | 1.1 | 8421 0414 56 |

^a Spindle thread, male 3/8"-24 UNF. ^b Side exhaust. ^c Internal thread 1/4"-28. ^d Internal thread 5/16". ^e Short lever as standard.

Dimensions

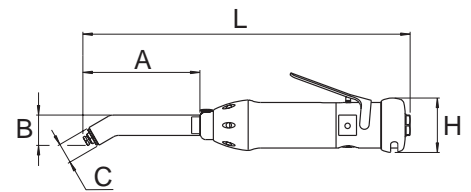


Dimensions

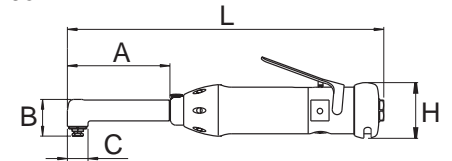
DRILLING CAPACITY

| Model | Angle head mm | | | | |
|----------------|---------------|-----|----|-----|----|
| | A | B | C | L | H |
| LBV11 S027-S30 | 59 | 25 | 18 | 224 | 30 |
| LBV11 S025-S90 | 44 | 30 | 18 | 204 | 30 |
| LBV16 032-S30 | 103 | 25 | 17 | 241 | 42 |
| LBV16 032-30 | 143 | 25 | 17 | 281 | 42 |
| LBV16 032-S32 | 103 | 25 | 17 | 241 | 42 |
| LBV16 032-32 | 143 | 25 | 17 | 281 | 42 |
| LBV16 032-90 | 111 | 30 | 17 | 248 | 42 |
| LBV16 032-S90 | 71 | 30 | 17 | 209 | 42 |
| LBV16 032-S92 | 71 | 30 | 17 | 209 | 42 |
| LBV16 032-92 | 111 | 30 | 17 | 249 | 42 |
| LBV16 032-90Z | 145 | 48 | 17 | 283 | 42 |
| LBV16 032-91 | 110 | 39 | 20 | 248 | 42 |
| LBV16 032-93 | 110 | 36 | 20 | 248 | 42 |
| LBV16 005-91 | 110 | 39 | 20 | 248 | 42 |
| LBV16 005-93 | 110 | 36 | 20 | 248 | 42 |
| LBV16 010-91 | 110 | 39 | 20 | 248 | 42 |
| LBV16 010-93 | 110 | 36 | 20 | 248 | 42 |
| LBV16 018-91 | 110 | 39 | 20 | 248 | 42 |
| LBV16 018-93 | 110 | 36 | 20 | 248 | 42 |
| LBV34 S040 | 92 | 97 | 20 | 255 | 43 |
| LBV34 S010 | 92 | 114 | 20 | 290 | 43 |
| LBV34 S005 | 92 | 120 | 20 | 290 | 43 |
| LBV36 S030-91 | 92 | 41 | 20 | 252 | 43 |
| LBV36 S060-91 | 92 | 41 | 20 | 252 | 43 |
| LBV36 S030-93 | 92 | 36 | 20 | 252 | 43 |
| LBV36 S060-93 | 92 | 36 | 20 | 252 | 43 |
| LBV36 S030-30 | 122 | 26 | 18 | 281 | 43 |
| LBV36 S045-30 | 122 | 26 | 18 | 281 | 43 |
| LBV36 S030-90 | 112 | 30 | 18 | 272 | 43 |
| LBV36 S045-90 | 112 | 30 | 18 | 272 | 43 |
| LBV36 S030-92 | 112 | 30 | 18 | 272 | 43 |
| LBV37 030 | 55 | 39 | 23 | 262 | 43 |
| LBV37 HD030 | 55 | 39 | 23 | 262 | 43 |

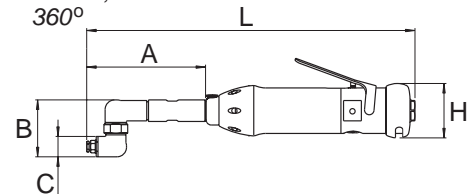
LBV11, -16, -36
30°



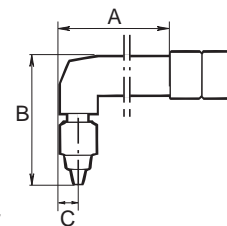
LBV11, -16, -36
90°



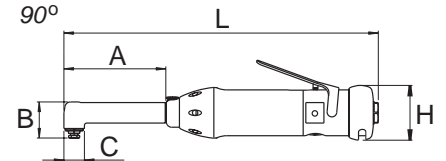
LBV16, -25
360°



LBV34
90°



LBV37
90°



Accessories Included

KEY WRENCHES

Collet or chuck with key
3 mm collet (5.0 collet capacity head)
6 mm collet (6.6 collet capacity head)

Optional Accessories

SAFETY LEVERS

| For model | Ordering No. |
|-----------|--------------|
| LBV16 | 4110 1787 90 |
| LBV36/37 | 4150 1594 97 |



Safety lever

SHORT LEVERS

| For model | Ordering No. |
|-----------|--------------|
| LBV16 | 4210 2306 04 |

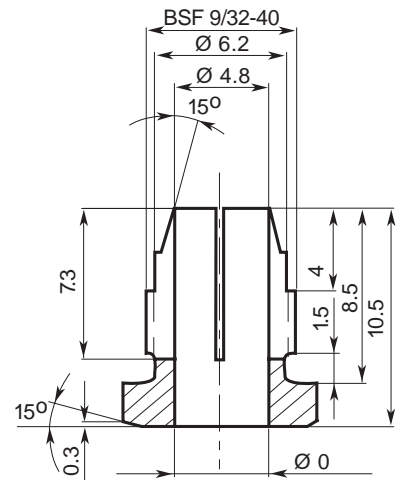


Short lever

COLLETS FOR 5.0 MM CAPACITY HEAD LBV11, LBV16 – (-30, -90, -90Z) AND LBV36 (-30, -90)

| Capacity mm | Ordering No. | Capacity mm | Ordering No. | Capacity in | Ordering No. |
|-------------|--------------|-------------|--------------|-------------|--------------|
| 1.0 | 4110 0438 01 | 3.4 | 4110 0438 33 | 1/16 | 4110 0438 19 |
| 1.5 | 4110 0438 02 | 3.5 | 4110 0438 13 | 3/32 | 4110 0438 20 |
| 1.8 | 4110 0438 28 | 3.6 | 4110 0438 24 | 1/8 | 4110 0438 21 |
| 2.0 | 4110 0438 03 | 3.7 | 4110 0438 34 | 5/32 | 4110 0438 22 |
| 2.1 | 4110 0438 29 | 3.8 | 4110 0438 14 | 3/16 | 4110 0438 23 |
| 2.2 | 4110 0438 04 | 3.9 | 4110 0438 35 | | |
| 2.3 | 4110 0438 30 | 4.0 | 4110 0438 15 | | |
| 2.4 | 4110 0438 05 | 4.1 | 4110 0438 25 | | |
| 2.5 | 4110 0438 06 | 4.2 | 4110 0438 26 | | |
| 2.6 | 4110 0438 07 | 4.3 | 4110 0438 36 | | |
| 2.7 | 4110 0438 31 | 4.4 | 4110 0438 37 | | |
| 2.8 | 4110 0438 32 | 4.5 | 4110 0438 16 | | |
| 2.9 | 4110 0438 08 | 4.6 | 4110 0438 38 | | |
| 3.0 | 4110 0438 09 | 4.7 | 4110 0438 39 | | |
| 3.1 | 4110 0438 10 | 4.8 | 4110 0438 18 | | |
| 3.2 | 4110 0438 11 | 4.9 | 4110 0438 40 | | |
| 3.3 | 4110 0438 12 | 5.0 | 4110 0438 27 | | |

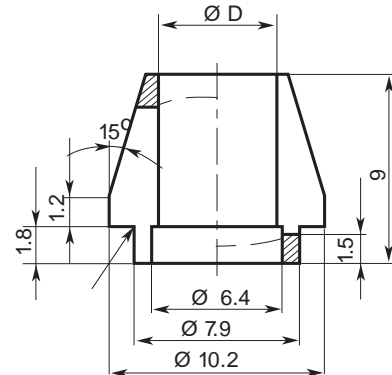
Collets for 5.0 mm (Thread BSF 9/32 -40)



COLLETS FOR 6.6 MM CAPACITY HEAD LBV16 (-91) AND LBV36 (-91)

| Capacity mm | Ordering No. | Capacity mm | Ordering No. |
|-------------|--------------|-------------|--------------|
| 1.6 | 4110 1411 01 | 4.2 | 4110 1411 14 |
| 1.8 | 4110 1411 02 | 4.4 | 4110 1411 15 |
| 2.0 | 4110 1411 03 | 4.6 | 4110 1411 16 |
| 2.2 | 4110 1411 04 | 4.8 | 4110 1411 17 |
| 2.4 | 4110 1411 05 | 5.0 | 4110 1411 18 |
| 2.6 | 4110 1411 06 | 5.2 | 4110 1411 19 |
| 2.8 | 4110 1411 07 | 5.4 | 4110 1411 20 |
| 3.0 | 4110 1411 08 | 5.6 | 4110 1411 21 |
| 3.2 | 4110 1411 09 | 5.8 | 4110 1411 22 |
| 3.4 | 4110 1411 10 | 6.0 | 4110 1411 23 |
| 3.6 | 4110 1411 11 | 6.2 | 4110 1411 24 |
| 3.8 | 4110 1411 12 | 6.4 | 4110 1411 25 |
| 4.0 | 4110 1411 13 | 6.6 | 4110 1411 26 |

Collets for 6.6 mm



Collet nut 4110 1410 00, to be ordered separately.



Service Kits

| | |
|-------------------|--------------|
| LBV16 | 4081 0322 90 |
| LBV24 | 4081 0005 90 |
| LBV25 | 4081 0272 90 |
| LGB/LBV34 | 4081 0035 90 |
| LBV36 (30, 90/92) | 4081 0263 90 |
| LBV36 (91/93) | 4081 0251 90 |
| LBV37 | 4081 0431 90 |

The LBD16M and LBP16M are designed with the operator in focus. A lightweight tool with a powerful air motor combined with interchangeable angle heads equals excellent flexibility in any handheld drilling operation. Swap to a new head in a matter of seconds with the easy-to-use quick change mechanism. With the LBD16M and LBP16M, you are always ready to take on any job in ever changing drilling applications.

- Quick change system – Easy-to-use and robust quick change design for high durability.
- Indexable head – The head can be positioned in any direction for maximum accessibility.
- High power lubrication free motor – No more oil aerosols, for a safer and cleaner working environment.



LBP16M

LBD16M

| Model | Free speed ^a rpm | Motor speed ^b | Weight lb | Air consumption cfm | Hose size | | Air inlet thread NPT | Power hp | Ordering No. |
|-----------------------------|--------------------------------|--------------------------|--------------|------------------------|-----------|-----|-------------------------|-------------|--------------|
| | | | | | mm | in | | | |
| Straight motor units | | | | | | | | | |
| LBD16M-005 | 500 | 600 | 1.25 | 18.4 | 6.3 | 1/4 | 1/4 | 0.4 | 8421 0122 05 |
| LBD16M-010 | 1000 | 1200 | 1.25 | 18.4 | 6.3 | 1/4 | 1/4 | 0.4 | 8421 0122 10 |
| LBD16M-018 | 1800 | 2100 | 1.25 | 18.4 | 6.3 | 1/4 | 1/4 | 0.4 | 8421 0122 18 |
| LBD16M-032 | 3200 | 3600 | 1 | 18.4 | 6.3 | 1/4 | 1/4 | 0.4 | 8421 0122 32 |
| LBD16M-045 | 4500 | 5100 | 1 | 18.4 | 6.3 | 1/4 | 1/4 | 0.4 | 8421 0122 45 |
| LBD16M-055 | 5500 | 6200 | 1 | 18.4 | 6.3 | 1/4 | 1/4 | 0.4 | 8421 0122 55 |
| Pistol motor units | | | | | | | | | |
| LBP16M-005 | 500 | 600 | 1.2 | 20.0 | 6.3 | 1/4 | 1/4 | 0.45 | 8421 0124 05 |
| LBP16M-010 | 1000 | 1100 | 1.2 | 20.0 | 6.3 | 1/4 | 1/4 | 0.45 | 8421 0124 10 |
| LBP16M-018 | 1800 | 2100 | 1.2 | 20.0 | 6.3 | 1/4 | 1/4 | 0.45 | 8421 0124 18 |
| LBP16M-033 | 3300 | 3700 | 1.1 | 20.0 | 6.3 | 1/4 | 1/4 | 0.45 | 8421 0124 33 |
| LBP16M-045 | 4500 | 5100 | 1.1 | 20.0 | 6.3 | 1/4 | 1/4 | 0.45 | 8421 0124 45 |
| LBP16M-060 | 6000 | 6800 | 1.1 | 20.0 | 6.3 | 1/4 | 1/4 | 0.45 | 8421 0124 60 |

^a The free speed is given when used with a 90° angle head. ^b Multiply this value with the Speed ratio to get the free speed of each angle head.

ANGLE HEADS

| Model | Angle head | Weight lb | Collet capacity | Thread in | Speed ratio | Length | | Ordering No. |
|---|------------|--------------|-----------------|--------------|-------------|--------|------|--------------|
| | | | | | | mm | in | |
| Angle heads with collet – Short | | | | | | | | |
| BHM90SC-5-0 | 90° | 0.5 | 5.0 | – | 14:16 | 65.5 | 2.58 | 8421 0123 02 |
| Angle heads with collet – Standard | | | | | | | | |
| BHM90C-5-0 | 90° | 0.36 | 5.0 | – | 14:16 | 88.5 | 3.48 | 8421 0123 00 |
| BHM90C-6-6 | 90° | 0.55 | 6.6 | – | 14:16 | 89.6 | 3.53 | 8421 0123 05 |
| BHM90C-8-0 | 90° | 0.55 | 8.0 | – | 14:17 | 89.7 | 3.54 | 8421 0123 80 |
| BHM45C-5-0 | 45° | 0.44 | 5.0 | – | 14:15 | 117.3 | 4.62 | 8421 0123 10 |
| BHM30C-5-0 | 30° | 0.44 | 5.0 | – | 14:15 | 120.4 | 4.74 | 8421 0123 20 |
| BHM30C-6-6 | 30° | 0.44 | 6.6 | – | 14:15 | 127 | 5 | 8421 0123 15 |
| BHM90ZC-5-0 | 360° | 0.47 | 5.0 | – | 7:9 | 100.8 | 3.97 | 8421 0123 30 |
| BHM90ZC-6-6 | 360° | 0.47 | 6.6 | – | 7:9 | 108 | 4.25 | 8421 0123 40 |
| Angle heads with collet – Extended | | | | | | | | |
| BHM90EC-5-0 | 90° | 0.58 | 5.0 | – | 14:16 | 128.5 | 5.06 | 8421 0123 08 |
| BHM45EC-5-0 | 45° | 0.64 | 5.0 | – | 14:15 | 157.3 | 6.19 | 8421 0123 18 |
| BHM30EC-5-0 | 30° | 0.64 | 5.0 | – | 14:15 | 160.4 | 6.31 | 8421 0123 28 |
| BHM90Ezc-5-0 | 360° | 0.67 | 5.0 | – | 7:9 | 140.8 | 5.54 | 8421 0123 38 |
| Angle head with internal thread – Standard | | | | | | | | |
| BHM90T-1-4 | 90° | 0.36 | – | 1/4"-28 | 14:16 | 88.5 | 3.48 | 8421 0123 01 |
| BHM90LT-1-4 | 90° | 0.52 | – | 1/4"-28 | 14:16 | 89.6 | 3.53 | 8421 0123 06 |
| BHM45T-1-4 | 45° | 0.44 | – | 1/4"-28 | 14:15 | 118.2 | 4.65 | 8421 0123 11 |
| BHM30T-1-4 | 30° | 0.44 | – | 1/4"-28 | 14:15 | 121.1 | 4.77 | 8421 0123 21 |
| BHM90ZT-1-4 | 360° | 0.47 | – | 1/4"-28 | 7:9 | 101 | 3.98 | 8421 0123 31 |
| Angle head with internal thread – Extended | | | | | | | | |
| BHM90ET-1-4 | 90° | 0.58 | – | 1/4"-28 | 14:16 | 128.5 | 5.06 | 8421 0123 09 |
| BHM45ET-1-4 | 45° | 0.64 | – | 1/4"-28 | 14:15 | 157.9 | 6.22 | 8421 0123 19 |
| BHM30ET-1-4 | 30° | 0.64 | – | 1/4"-28 | 14:15 | 161.1 | 6.34 | 8421 0123 29 |
| BHM90EZT-1-4 | 360° | 0.67 | – | 1/4"-28 | 7:9 | 141 | 5.55 | 8421 0123 39 |
| Straight short angle head | | | | | | | | |
| BHM0C-5-0 | 0° | 0.31 | 5.0 | – | 1:1 | 78 | 3.07 | 8421 0123 43 |
| BHM0T-1-4 | 0° | 0.31 | – | 1/4"-28 | 1:1 | 78 | 3.07 | 8421 0123 44 |

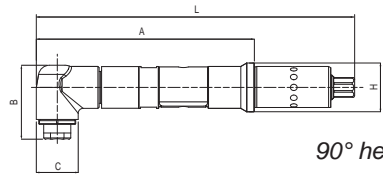
Angle heads Standard/Extended (pictures shows extended versions)



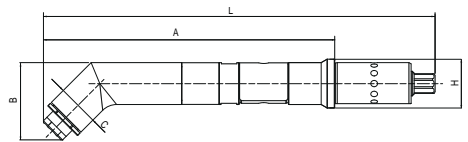
Dimensions

ANGLE HEAD DIMENSIONS

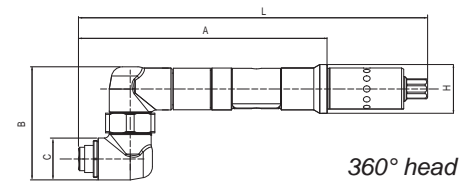
| Model | A mm | B mm | C mm | L mm | H mm | Ordering No. |
|------------------------------|---------|---------|---------|---------|---------|--------------|
| 90° heads | | | | | | |
| BHM90SC-5-0 | 65.5 | 29.8 | 17 | 106.2 | 19.8 | 8421 0123 02 |
| BHM90C-5-0 | 88.5 | 29.8 | 17 | 129.2 | 19.8 | 8421 0123 00 |
| BHM90C-6-6 | 90 | 39.3 | 20 | 130.3 | 20 | 8421 0123 05 |
| BHM90C-8-0 | 90 | 41.1 | 20 | 130.3 | 20 | 8421 0123 80 |
| BHM90EC-5-0 | 128.5 | 29.8 | 17 | 169.2 | 19.8 | 8421 0123 08 |
| BHM90T-1-4 | 88.5 | 30 | 17 | 129.2 | 19.8 | 8421 0123 01 |
| BHM90LT-1-4 | 90 | 36 | 20 | 130.3 | 20 | 8421 0123 06 |
| BHM90ET-1-4 | 128.5 | 30 | 14 | 169.2 | 19.8 | 8421 0123 09 |
| 30° heads | | | | | | |
| BHM30C-5-0 | 120.4 | 25 | 17 | 161 | 19.8 | 8421 0123 20 |
| BHM30C-6-6 | 127.3 | 32.3 | 17 | 168 | 19.8 | 8421 0123 15 |
| BHM30EC-5-0 | 160.4 | 25.2 | 17 | 201 | 19.8 | 8421 0123 28 |
| BHM30T-1-4 | 121.1 | 26.4 | 17 | 161.6 | 19.8 | 8421 0123 21 |
| BHM30ET-1-4 | 161.1 | 26.4 | 17 | 201.8 | 19.8 | 8421 0123 29 |
| 45° heads | | | | | | |
| BHM45C-5-0 | 117.3 | 30.5 | 17 | 158 | 19.8 | 8421 0123 10 |
| BHM45EC-5-0 | 157.3 | 30.5 | 17 | 198 | 19.8 | 8421 0123 18 |
| BHM45T-1-4 | 118.2 | 31.4 | 17 | 159 | 19.8 | 8421 0123 11 |
| BHM45ET-1-4 | 158.2 | 31.4 | 17 | 199 | 19.8 | 8421 0123 19 |
| 360° heads | | | | | | |
| BHM90ZC-5-0 | 100.8 | 45.9 | 17 | 141.5 | 19.8 | 8421 0123 30 |
| BHM90ZC-6-6 | 107.3 | 45.9 | 17 | 148 | 19.8 | 8421 0123 40 |
| BHM90EZC-5-0 | 140.8 | 45.9 | 17 | 181.5 | 19.8 | 8421 0123 38 |
| BHM90ZT-1-4 | 101 | 45.9 | 17 | 141.5 | 19.8 | 8421 0123 31 |
| BHM90EZT-1-4 | 141 | 45.9 | 17 | 181.5 | 19.8 | 8421 0123 39 |
| Straight heads | | | | | | |
| BHM0C-5-0 | 78 | - | 17 | 119 | 19.8 | 8421 0123 43 |
| BHM0T-1-4 | 78 | - | 17 | 119 | 19.8 | 8421 0123 44 |
| Extension - for chuck | | | | | | |
| EXTENSION | 35 | - | 17.5 | 76 | 28.5 | 4110 1692 90 |



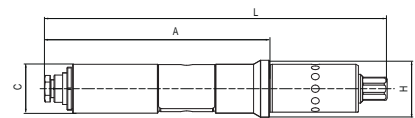
90° head



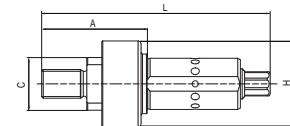
30° and 45° head



360° head



Straight head



Extension for chuck

Optional Accessories



STRAIGHT DRILL HEAD FOR CHUCK

| For model | Ordering No. |
|----------------|--------------|
| LBD16M, LBP16M | 4110 1692 90 |

SAFETY LEVERS

| For model | Ordering No. |
|-----------|--------------|
| LBD16M | 4110 1787 80 |

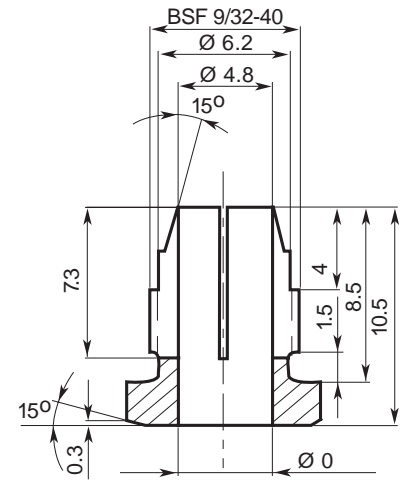


SHORT LEVERS

| For model | Ordering No. |
|-----------|--------------|
| LBD16M | 4210 2306 04 |

COLLETS FOR 5.0 MM CAPACITY ANGLE HEAD BHMC-5-0 (-30, -45, -90, -90Z)

| Capacity mm | Ordering No. | Capacity mm | Ordering No. | Capacity in | Ordering No. |
|-------------|--------------|-------------|--------------|-------------|--------------|
| 1.0 | 4110 0438 01 | 3.4 | 4110 0438 33 | 1/16 | 4110 0438 19 |
| 1.5 | 4110 0438 02 | 3.5 | 4110 0438 13 | 3/32 | 4110 0438 20 |
| 1.8 | 4110 0438 28 | 3.6 | 4110 0438 24 | 1/8 | 4110 0438 21 |
| 2.0 | 4110 0438 03 | 3.7 | 4110 0438 34 | 5/32 | 4110 0438 22 |
| 2.1 | 4110 0438 29 | 3.8 | 4110 0438 14 | 3/16 | 4110 0438 23 |
| 2.2 | 4110 0438 04 | 3.9 | 4110 0438 35 | | |
| 2.3 | 4110 0438 30 | 4.0 | 4110 0438 15 | | |
| 2.4 | 4110 0438 05 | 4.1 | 4110 0438 25 | | |
| 2.5 | 4110 0438 06 | 4.2 | 4110 0438 26 | | |
| 2.6 | 4110 0438 07 | 4.3 | 4110 0438 36 | | |
| 2.7 | 4110 0438 31 | 4.4 | 4110 0438 37 | | |
| 2.8 | 4110 0438 32 | 4.5 | 4110 0438 16 | | |
| 2.9 | 4110 0438 08 | 4.6 | 4110 0438 38 | | |
| 3.0 | 4110 0438 09 | 4.7 | 4110 0438 39 | | |
| 3.1 | 4110 0438 10 | 4.8 | 4110 0438 18 | | |
| 3.2 | 4110 0438 11 | 4.9 | 4110 0438 40 | | |
| 3.3 | 4110 0438 12 | 5.0 | 4110 0438 27 | | |

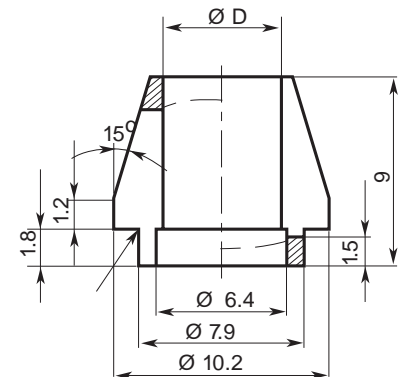


Collets for 5.0 mm (Thread BSF 9/32 -40)

COLLETS FOR 6.6 MM CAPACITY ANGLE HEAD BHMC-6-6 (-30, -90, -90Z)

| Capacity mm | Ordering No. | Capacity mm | Ordering No. |
|-------------|--------------|-------------|--------------|
| 1.6 | 4110 1411 01 | 4.2 | 4110 1411 14 |
| 1.8 | 4110 1411 02 | 4.4 | 4110 1411 15 |
| 2.0 | 4110 1411 03 | 4.6 | 4110 1411 16 |
| 2.2 | 4110 1411 04 | 4.8 | 4110 1411 17 |
| 2.4 | 4110 1411 05 | 5.0 | 4110 1411 18 |
| 2.6 | 4110 1411 06 | 5.2 | 4110 1411 19 |
| 2.8 | 4110 1411 07 | 5.4 | 4110 1411 20 |
| 3.0 | 4110 1411 08 | 5.6 | 4110 1411 21 |
| 3.2 | 4110 1411 09 | 5.8 | 4110 1411 22 |
| 3.4 | 4110 1411 10 | 6.0 | 4110 1411 23 |
| 3.6 | 4110 1411 11 | 6.2 | 4110 1411 24 |
| 3.8 | 4110 1411 12 | 6.4 | 4110 1411 25 |
| 4.0 | 4110 1411 13 | 6.6 | 4110 1411 26 |

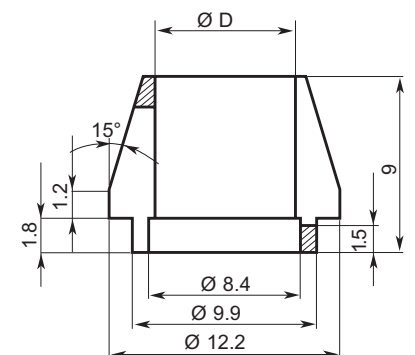
Collet nut 4110 1410 00, to be ordered separately.



Collets for 6.6 mm

COLLETS FOR 8.0 MM CAPACITY ANGLE HEAD BHMC-8-0 (-90)

| Capacity mm | Ordering No. | Capacity mm | Ordering No. |
|-------------|--------------|-------------|--------------|
| 6.8 | 4110 1812 01 | 7.6 | 4110 1812 05 |
| 7.0 | 4110 1812 02 | 7.8 | 4110 1812 06 |
| 7.2 | 4110 1812 03 | 8.0 | 4110 1812 07 |
| 7.4 | 4110 1812 04 | | |



Collets for 8.0 mm



Service Kits

LBD16M 4081 0322 90

LBP16M 4081 0271 90

The Atlas Copco LBS36 drill is equipped with an integrated micro stop. It is designed for the aerospace industry where the focus is on high-precision drilling, reaming and countersinking.

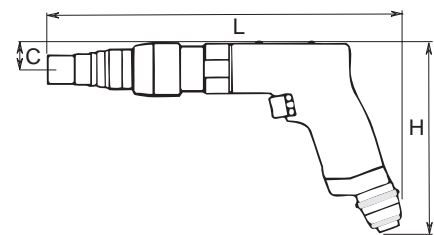
- **Accurate** – The integrated micro stop function makes the LBS36 unique for high-precision drilling of rivet holes and other fasteners. Minimized spindle run-out is achieved by eliminating standard drill chuck.
- **Ergonomic handle design** – The integrated micro stop function makes the tool shorter and lighter in weight.
- **Flexible** – Can be used for drilling, reaming, countersinking and, in certain applications, a combined operation using a form bit.
- **Dust extraction** – Equipped with a specially designed spot suction system for working in composite materials.
- **Lubrication-free** – For clean working environment and operator comfort.



| Model | Free speed r/min | Spindle thread in/mm | Stroke | | Setting range ± | | Weight lb | Hose size | | Air consumption cfm | Air inlet thread NPT | Ordering No. |
|---------------|---------------------|----------------------------|--------|-----|--------------------|-----|--------------|-----------|-----|------------------------|----------------------------|--------------|
| | | | mm | in | mm | in | | mm | in | | | |
| LBS26 H033-40 | 3300 | 1/4"-28 | 40 | 1.6 | 6 | 1/4 | 2.0 | 10 | 3/8 | 31.8 | 3/8 | 8421 0220 40 |
| LBS26 H013-40 | 1300 | 1/4"-28 | 40 | 1.6 | 6 | 1/4 | 2.6 | 10 | 3/8 | 31.8 | 3/8 | 8421 0220 45 |
| LBS36 H033-40 | 3300 | 1/4"-28 | 40 | 1.6 | 6 | 1/4 | 2.6 | 10 | 3/8 | 34.9 | 3/8 | 8421 0220 80 |
| LBS36 H013-40 | 1300 | 1/4"-28 | 40 | 1.6 | 6 | 1/4 | 3.3 | 10 | 3/8 | 34.9 | 3/8 | 8421 0220 90 |

Dimensions

| Model | L mm | H mm | C mm |
|---------------|---------|---------|---------|
| LBS26 H033-40 | 253 | 146 | 21 |
| LBS26 H013-40 | 285 | 146 | 21 |
| LBS36 H033-40 | 281 | 157 | 21 |
| LBS36 H013-40 | 314 | 157 | 21 |



Accessories Included

Hose nipple
2x2 mm Allen wrenches

Optional Accessories

| Designation | | Attachment | Ordering No. |
|--|-------|------------|--------------|
| Plain base, dia 24 mm | Fig 1 | M 20x1 | 4110 1521 00 |
| Plain base for nylon ring (attached with thread M35x1) | Fig 2 | M 20x1 | 4110 1522 00 |
| Separate nylon ring for above base, outer dia 40 mm, thread M35x1 | Fig 3 | M 20x1 | 4110 1523 00 |
| Plain base, dia 14.5 mm | Fig 4 | M 20x1 | 4110 1520 00 |
| Tripod, nylon supported | Fig 5 | Dia 22 mm | 4110 1524 00 |

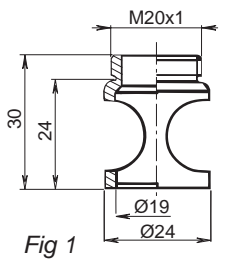


Fig 1

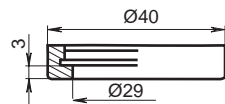


Fig 3

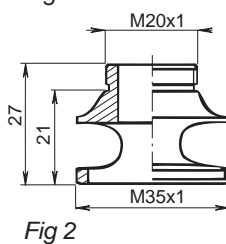


Fig 2

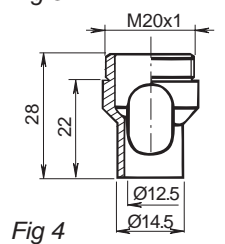


Fig 4

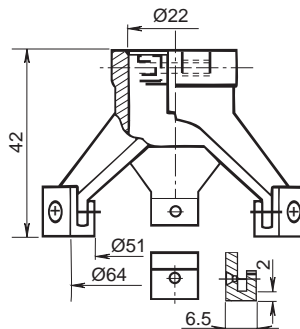


Fig 5



Service Kits

LBS26 4081 0507 90
LBS36 4081 0005 90

Atlas Copco tappers are designed for tapping and thread-cleaning operations with thread taps. The tools are fitted with a tap chuck as standard.

- Comfortable and effective – The ergonomically designed handle gives a comfortable grip and maximum performance.
- Higher productivity – Double speed when you withdraw the machine.
- Low noise level – Rear-directed exhaust gives a lower noise level.
- Lubrication-free – For a clean working environment and operator comfort.
- Quick change system – Upgrade your old tool, or order a new one with this system. Various tap holders can be used to change a broken tap or to change to a different tap size.
- Lower cost – The efficient air motor, together with interchangeable components from our standard drills, cut your costs.



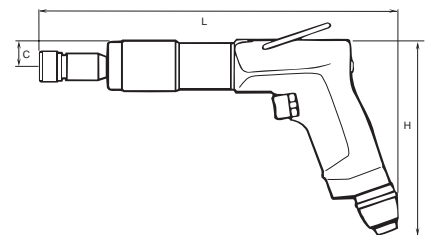
| Model | Free speed | | Tapping capacity mm | Weight | | Hose dimension | | Air inlet thread BSP | Air consumption | | With chuck Ordering No. |
|---|------------------|------------------|------------------------|--------|-----|----------------|-----|-------------------------|-----------------|------|----------------------------|
| | Forward r/min | Reverse r/min | | kg | lb | mm | in | | l/s | cfm | |
| Pistol-grip tappers with air supply through handle | | | | | | | | | | | |
| LGB34 H007 | 700 | 1400 | 10 | 1.8 | 4.0 | 10.0 | 3/8 | 1/4 | 7.5 | 15.9 | 8421 0311 66 |
| LGB34 H007Q ^a | 700 | 1400 | 10 | 1.8 | 4.0 | 10.0 | 3/8 | 1/4 | 7.5 | 15.9 | 8421 0311 76 |
| LGB36 H007Q ^a | 700 | 1400 | 12 | 2.0 | 4.4 | 10.0 | 3/8 | 3/8 | 16.5 | 34.9 | 8421 0411 00 |
| Straight tappers | | | | | | | | | | | |
| LGB34 S007 | 700 | 1400 | 10 | 1.8 | 4.0 | 10.0 | 3/8 | 1/4 | 7.5 | 15.9 | 8421 0311 72 |

^a Quick change system.

Taper: Jacob 1

Dimensions

| Model | L mm | H mm | C mm |
|------------|---------|---------|---------|
| LGB34 H007 | 300 | 156 | 20 |
| LGB34 S007 | 293 | 43 | 21 |
| LGB36 H007 | 335 | 157 | 20 |



Accessories Included

Non Quick change system

LGB34 Chuck complete with collet 6.4-10 mm 4021 0469 00

Quick change system

Chuck plus one tap holder with collet for M6 shank Ø 6.3 mm.

Optional Accessories

COLLETS FOR NON QUICK CHANGE SYSTEM

| Model | Capacity | | Ordering No. |
|-------|-----------|---------------|--------------|
| | mm | inch | |
| LGB34 | 3.5 - 6.5 | 0.139 - 0.257 | 4021 0337 00 |
| | 4.5 - 8.1 | 0.176 - 0.320 | 4021 0336 00 |
| | 6.4 - 9.7 | 0.253 - 0.383 | 4021 0456 00 |

COLLETS FOR QUICK CHANGE SYSTEM

| Collets for tap size mm | Shank dia | | Ordering No. |
|----------------------------|-----------|-------------|--------------|
| | mm | in | |
| M2.2/M2.5 | 2.8 | | 4021 0414 01 |
| M3 | 3.15 | 1/8 | 4021 0414 02 |
| M3.5 | 3.5 | | 4021 0414 03 |
| M4 | 4.0 | | 4021 0414 04 |
| M4.5 | 4.5 | | 4021 0414 05 |
| M5 | 5.0 | 3/16 | 4021 0414 06 |
| M5.5 | 5.6 | 7/32 | 4021 0414 07 |
| M6 | 6.4 | 1/4 | 4021 0414 08 |
| M6 (DIN) | 6.0 | | 4021 0414 13 |
| M7 | 7.1 | 9/32 | 4021 0414 09 |
| M8/M11 | 8.0 | 5/16 & 7/16 | 4021 0414 10 |
| M9/M12 | 9.0 | 1/2 | 4021 0414 11 |
| M10 | 10.0 | 3/8 | 4021 0414 12 |

COMPLETING EXISTING EQUIPMENT WITH QUICK CHANGE SYSTEM

| Accessories | Length mm | Ordering No. |
|--------------------|--------------|--------------|
| Quick change chuck | 47 | 4021 0406 90 |
| Tap holder | 58 | 4021 0408 00 |



Service Kits

| | |
|-------|--------------|
| LGB34 | 4081 0035 90 |
| LGB36 | 4081 0194 90 |

Atlas Copco screw-feed drills are ideal for heavy-duty drilling operations requiring high feed forces. They can also be used for reaming and tube-rolling.

- **Reliable** – Simple, reliable design.
- **Constant speed** – The speed governor keeps the drilling speed constant and reduces air consumption as power is reduced.
- **Safer** – The safety catch prevents accidental starting. The throttle is also self-closing.



| Model | Forward | Reverse |
|-------|---------|---------|
| RAB9 | 1.14 hp | 0.74 hp |
| RAB12 | 2.0 hp | 1.5 hp |

| Model | Free speed r/min | Capacity | | | Morse taper No. | Length feed mm | Height in | Weight lb | Hose dimension | | Air consumption max output cfm | Distance centre to side mm | Air inlet thread NPT | Ordering No. |
|------------|------------------|-------------|------------|------------|-----------------|----------------|-----------|-----------|----------------|-----|--------------------------------|----------------------------|----------------------|--------------|
| | | Drilling mm | Reaming mm | Tapping mm | | | | | mm | in | | | | |
| RAB9 VR003 | 300 | 23 | 23 | 16 | 2 | 75 | 10.4 | 20.9 | 13 | 1/2 | 47 | 40 | 1/2 | 8421 5109 37 |
| RAB9 VR006 | 600 | 23 | 23 | 12 | 2 | 75 | 10.4 | 20.9 | 13 | 1/2 | 49 | 40 | 1/2 | 8421 5109 45 |
| RAB12 L150 | 140 | 51 | 40 | 32 | 4 | 90 | 15.2 | 32.8 | 16 | 5/8 | 64 | 50 | 1/2 | 8421 5112 08 |
| RAB12 L250 | 240 | 51 | 40 | 30 | 4 | 90 | 13.2 | 32.8 | 16 | 5/8 | 70 | 50 | 1/2 | 8421 5112 16 |
| RAB12 L450 | 475 | 32 | 32 | 24 | 3 | 90 | 13.4 | 28.4 | 16 | 5/8 | 68 | 50 | 1/2 | 8421 5112 24 |

Accessories Included

Hose nipple

Optional Accessories

SQUARE DRIVE ADAPTER

| Morse taper No. | Square drive in | Ordering No. |
|-----------------|-----------------|--------------|
| 3 | 1 | 4021 0394 00 |
| 4 | 1 | 4021 0395 00 |



Square drive adapter

Robust and versatile, the PFD-drills are your best choice for holemaking

PRODUCTIVITY

With this platform you have all you need for hole preparation. Reduce cycle time and increase output with a powerful turbine motor. This robust tool is well suited for factory environment and the long service intervals maximizes uptime of your investments.

HOLE QUALITY

Keep your workplace clean with Atlas Copco's ChipLet® feature which makes chips easy to evacuate. With ChipLet® during countersinking, you have a one-step process. Giving process improvements in terms of both productivity and quality.

ERGONOMICS

My operators will really appreciate how all the controls on the tool are grouped in one and the same place. This reduces the risk of operator errors. The tool is also very well balanced which makes it easy to move around.

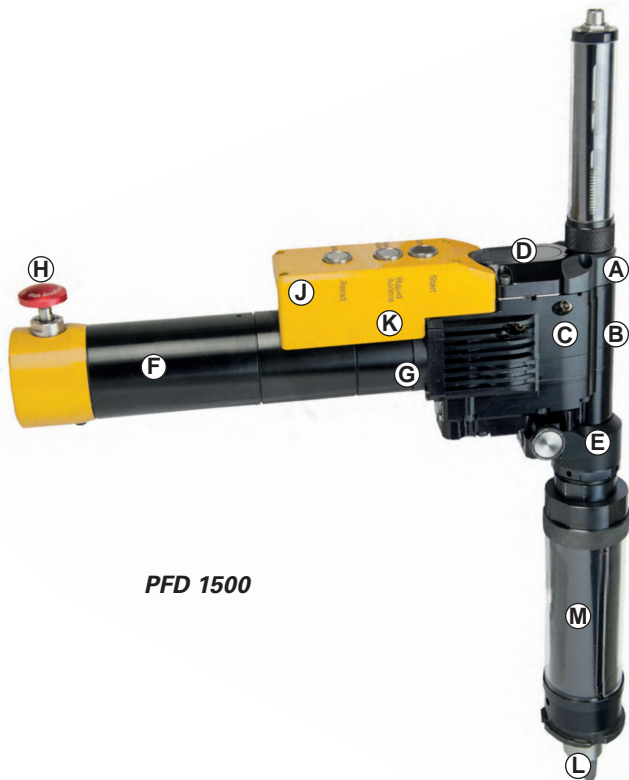
SAFE OPERATION

The modular design means fewer back-up tools. You can also save on service as the platform is based on standard, reusable components.

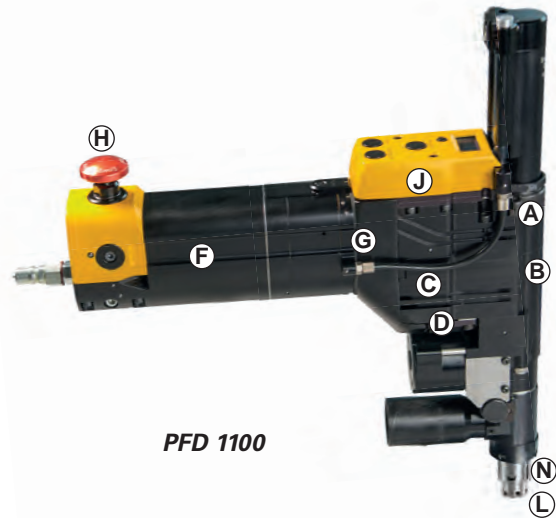
SUPPORT

The modular approach means quick deliveries when needed, and makes it easy to re-work your existing products when urgent applications come up. With our technical documentation and support you will quickly put new tools to work on your assembly line.





PFD 1500



PFD 1100

PFD 1500

| Item | Ordering No. |
|---------------------|--------------|
| PFD1500RA-200-R | 8440 1500 39 |
| Indexer-1-9-16 | 4141 0306 90 |
| PFD1500-IPR2 | 4141 0034 92 |
| Spindle-1500-12-9-6 | 4141 0004 91 |
| Guard-1500-12 | 4141 0323 91 |
| Nose-8IN-1-1-2 | 4141 0245 90 |

Example: Twistlock model with rapid advance and indexer. Spindle with 9/16"-18" interface, speed of 200 rpm and feed of 0.05 mm/r (0.002 IPR). Suitable for drilling of 19 mm holes (3/4") in Ti or Ti/CFRP stacks.

PFD 1100

| Item | Ordering No. |
|--------------------|--------------|
| PFD1100RA-IFB110B | 8440 1110 66 |
| Spindle-CC-1100-2 | 4141 0742 90 |
| Guard-1100-2in-p | 4141 0826 92 |
| Guide-CC-R-1100-M6 | 4141 0743 91 |
| Bush-CC-1100-53 | 4141 0707 92 |
| Foot-CC-1100-MINI | 4141 0764 90 |
| Mandrel-CC-25.4-A | 4141 0806 28 |
| Collet-CC-1 | 4141 0813 28 |

Example: Concentric collet model with inboard lubricator, counter and ChipLet®. Spindle with M6 interface, speed of 2600 rpm and feed of 0.07 mm/r (0.003 IPR). Suitable for drill and countersink of Ø 6.35 (1/4") holes in Al or Al/CFRP stacks.

- (A) Optional ChipLet® module which effectively breaks chips while drilling for improved chip evacuation and hole quality.
- (B) Angle head with superior durability with double needle bearings for both feed and drive gear.
- (C) Overload clutch protects the angle head and drive train from overthrust.
- (D) The replaceable feed cassette system enables quick and easy change of feed rate.
- (E) Optional indexer which allows the tool to be locked in the jig also when free space is compromised.
- (F) High torque, high power governed air motor maintains cutting speed while drilling.
- (G) Easy-to-change split gearbox for quick adjustment of rpm.
- (H) Emergency stop fully compliant with the European machinery directive for a high level of safety.
- (J) Rapid advance of spindle reduces cycle time and makes setup a quick and safe task.
- (K) Reliable and user-friendly tool controls with optional cycle counter.
- (L) Best in class spindle power and thrust capabilities. A wide range of speeds and feeds.
- (M) A large selection of tool noses with or without vacuum port makes the tool fit existing drill jigs.
- (N) Concentric collet foot which allows clamp force for countersinking up to diameter 22 mm (7/8"). Debris protection and efficient vacuum exhaust of chips. Foot is modular and easily removed for drill bit change.

Specifications

| Feature | PFD1100 | | PFD1500 | |
|----------------------|-------------|------------|-------------|------------|
| | Metric | Imperial | Metric | Imperial |
| Motor | Turbine | Turbine | Vane | Vane |
| Drill and ream | yes | yes | yes | yes |
| Countersinking | yes | yes | no | no |
| Sound level | 78 dB(A) | 78 dB(A) | 83 dB(A) | 83 dB(A) |
| Spindle power | 1.7 kW | 2.3 hp | 1.5 kW | 2.0 hp |
| Max hole | 15.9 mm | 5/8" | 32 mm | 1 1/4" |
| Max countersink | 22 mm | 7/8" | N/A | N/A |
| Max speed | 7300 rpm | 7300 rpm | 2360 rpm | 2360 rpm |
| Min speed | 350 rpm | 350 rpm | 38 rpm | 38 rpm |
| Max thrust | 2000 N | 450 lbf | 4000 N | 900 lbf |
| Max clamp force (cc) | 1800 N | 400 lbf | N/A | N/A |
| Max feed | 0.17 mm/rev | 0.007 IPR | 0.25 mm/rev | 0.010 IPR |
| Tool weight (base) | 3.0 kg | 6.6 lb | 5.5 kg | 12.0 lb |
| Max air consumption | 30 l/s | 60 cfm | 35 l/s | 70 cfm |
| Air inlet | 1/2" BSP | 1/2" NPT | 1/2" BSP | 1/2" NPT |
| Operating pressure | 5.5–7.5 bar | 80-110 psi | 5.5–7.5 bar | 80-110 psi |
| Angle head radius | 16.0 mm | 5/8" | 17.8 mm | 0.7" |
| Air hose | 13 mm | 1/2" | 16 mm | 5/8" |

Collet



Mandrel



Counter sink stop nut



Optional Equipment

| Item | PFD1100 | PFD1500 |
|---------------------------|----------------|---------------------|
| Chipler® | yes | yes |
| Rapid advance | no | yes (with J-Clutch) |
| Lubrication pump | inboard, 30 ml | onboard, 55 ml |
| Counter | yes | yes |
| Indexer | yes | yes |
| Tool handle | no | yes |
| Nose sizes | 21k–23k | 23k–25k |
| Concentric collet | yes | no |
| Max collet outer diameter | 1 3/8" | N/A |

Tool nose with vacuum port



Tool nose



Tool nose indexer

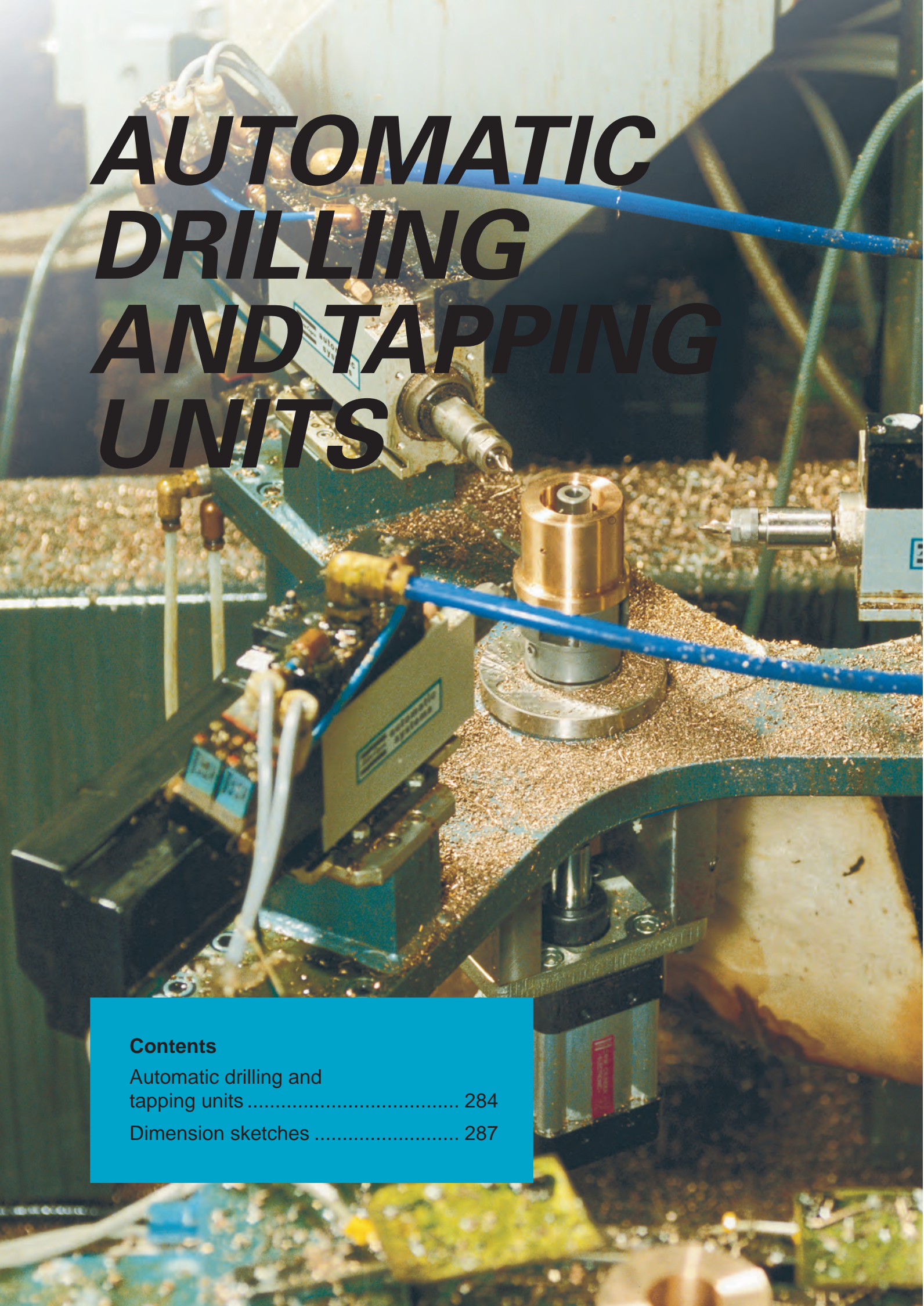


Concentric collet unit



Air Installation

| Item | PFD1100 Light to Medium Duty Cycle | PFD1500 / PFD1100 Heavy Duty Cycle |
|----------------------|---------------------------------------|---------------------------------------|
| Swivel | MultiFlex with 1/2 | MultiFlex with 1/2 |
| Coupling | ErgoQIC 08 with H13 | ErgoQIC 10 with H16 |
| Air fitting | ErgoNIP 08 with 1/2 | ErgoNIP 10 with 1/2 |
| Hose | PVC 13, 30 m coil | PVC 16, 30 m coil |
| Clamp | clamp for PVC 13 | clamp for PVC 13 |
| Air preparation unit | MIDI Optimizer F/R A with 1/2 | Optimizer F/R A with 1/2 |
| Ball valve | BAL-1A with 1/2 | BAL-1A with 1/2 |
| Connection | Double with two 1/2 | Double with two 1/2 |

A close-up photograph of an industrial automatic drilling and tapping unit. The machine is a complex assembly of metal parts, including a drill bit, a tapping tool, and various sensors and actuators. A blue cable is connected to the machine. The background is slightly blurred, showing other parts of the factory environment. The text 'AUTOMATIC DRILLING AND TAPPING UNITS' is overlaid in large, bold, black letters on the left side of the image.

AUTOMATIC DRILLING AND TAPPING UNITS

Contents

| | |
|--|-----|
| Automatic drilling and tapping units | 284 |
| Dimension sketches | 287 |

More mechanization in your drilling operations

Simple and cost effective, Atlas Copco automatic drilling and tapping units cut costs by reducing machining time in ancillary equipment, or in highly automated special machines. Modular designs allow the units to be easily replaced, transferred to other machines, or combined to form new special-purpose machines.



Selection Guide

Dimensions in mm



Steel



Aluminum

LBL45

| 025 | 015 | 010 | 007 | 003 |
|------|------|------|------------|------------|
| — | 7.0 | 10.0 | 14.0 (M8) | 20.0 (M12) |
| | | | | |
| | | | | |
| 10.0 | 14.0 | 16.0 | 22.0 (M12) | 32.0 (M16) |

LBL35

| 054 | 030 | 014 | 007 |
|-----|-----|-----------|------------|
| 3.0 | 5.0 | 8.0 (M4) | 11.0 (M8) |
| | | | |
| | | | |
| 5.0 | 7.0 | 10.0 (M5) | 13.0 (M10) |

LBL25

| 220 | 049 | 022 | 011 |
|-----|-----|-----|------|
| 1.2 | 3.2 | 5.0 | 8.0 |
| | | | |
| | | | |
| 2.0 | 5.0 | 6.5 | 10.0 |

